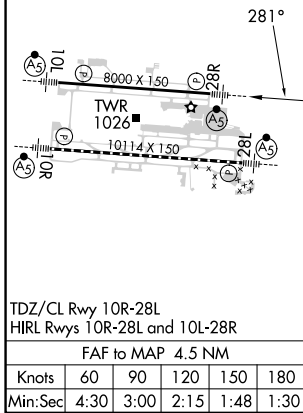
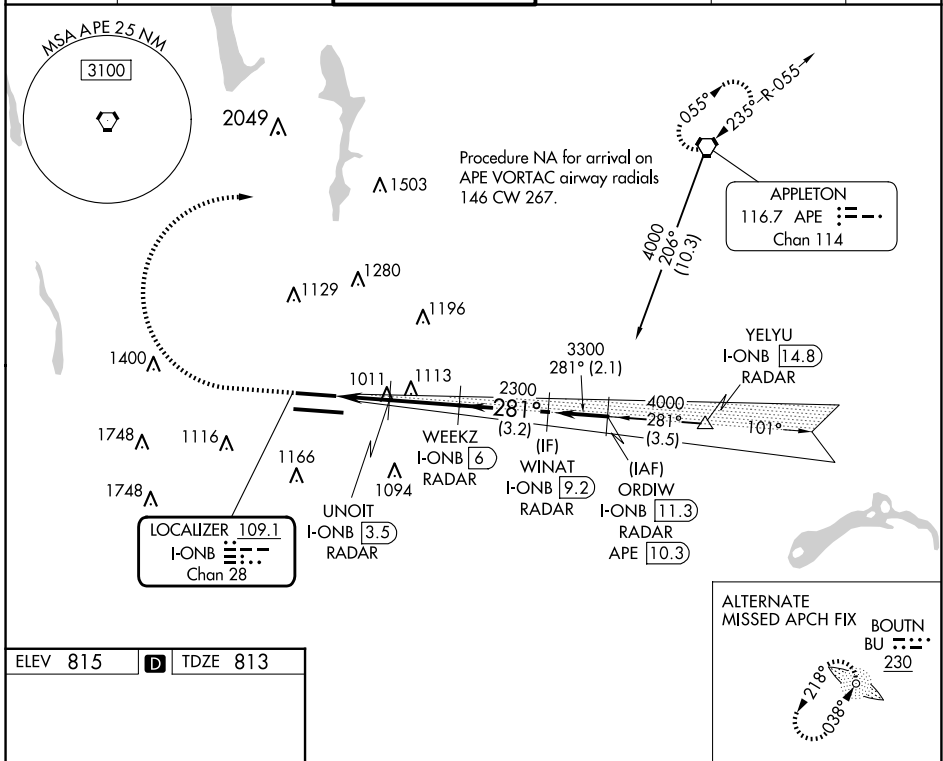


LOC/DME I-ONB 109.1 Chan 28	APP CRS 281°	Rwy ldg 8000 TDZE 813 Apt Elev 815
--	------------------------	---

ILS or LOC RWY 28R

JOHN GLENN COLUMBUS INTL (CMH)

DME or RADAR required.		MALSR	MISSED APPROACH: Climb to 1400 then climbing right turn to 3000 direct APE VORTAC and hold.		
<p>Simultaneous approach authorized. Autopilot coupled approach NA.</p> <p>For inop ALS, increase S-LOC 28R Cat C/D visibility to 1 3/8 SM.</p>		AS			
D-ATIS 124.6	COLUMBUS APP CON 125.95 371.975	COLUMBUS TOWER 132.7 257.8	GND CON 121.9 348.6	CLNC DEL 126.3	CPDLC



1400	3000	APE	WEEKZ I-ONB [6] RADAR	WINAT I-ONB [9.2] RADAR
UNOIT I-ONB [3.5] RADAR	2300	281°	3300	GS 3.00° TCH 50
I-ONB [1.5]	I-ONB [2.8]	1480	2300	
1.3 NM	0.7 NM	2.5 NM	3.2 NM	
CATEGORY	A	B	C	D
S-ILS 28R	1013/24 200 (200-1/2)			
S-LOC 28R	1280/24	467 (500-1/2)	1280/50	467 (500-1)
CIRCLING	1340-1	525 (600-1)	1520-2 705 (800-2)	1520-2 1/4 705 (800-2 1/4)

EC-2, 20 MAR 2025 to 17 APR 2025

EC-2, 20 MAR 2025 to 17 APR 2025