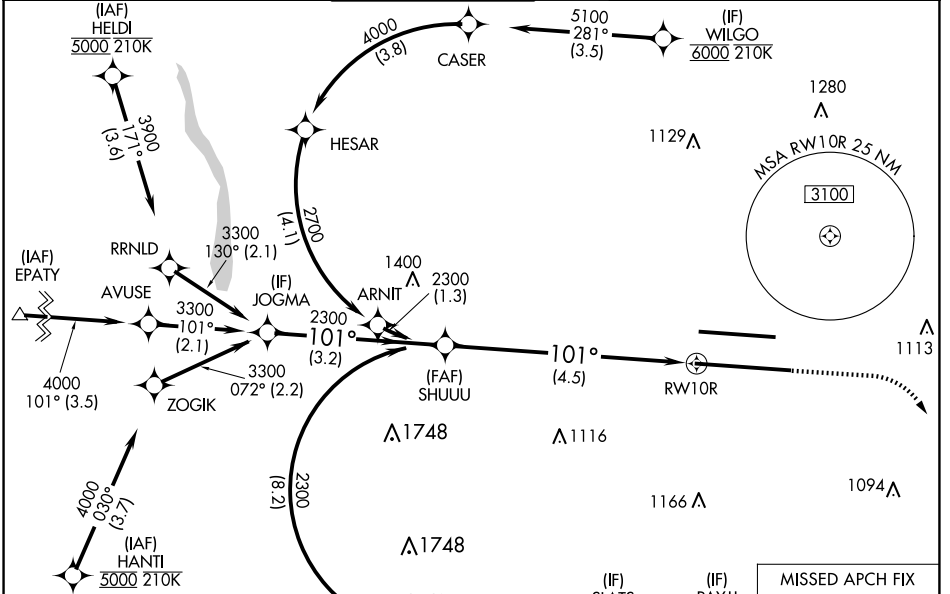


APP CRS	Rwy Idg	<b>10113</b>
<b>101°</b>	TDZE	<b>809</b>
	Apt Elev	<b>815</b>

# RNAV (RNP) Z RWY 10R

JOHN GLENN COLUMBUS INTL (CMH)

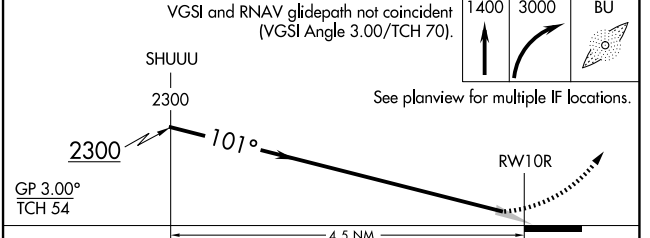
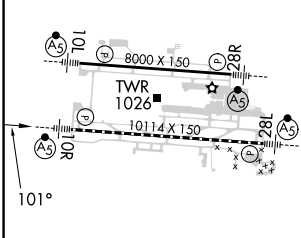
RNP AR APCH - GPS.		MALSR	MISSED APPROACH: Climb to 1400 then climbing right turn to 3000 direct BOUTN LOM and hold.		
<p>Simultaneous approach authorized. For uncompensated Baro-VNAV systems, procedure NA below -14°C or above 54°C. For inop ALS, increase RNP 0.30 all Cats visibility to RVR 6000.</p>					
D-ATIS	COLUMBUS APP CON	COLUMBUS TOWER	GND CON	CLNC DEL	CPDLC
<b>124.6</b>	<b>125.95 371.975</b>	<b>132.7 257.8</b>	<b>121.9 348.6</b>	<b>126.3</b>	



EC-2, 20 MAR 2025 to 17 APR 2025

EC-2, 20 MAR 2025 to 17 APR 2025

ELEV	<b>815</b>	<b>D</b>	TDZE	<b>809</b>
------	------------	----------	------	------------



CATEGORY	A	B	C	D
RNP 0.17 DA		1138/26	329 (400-½)	
RNP 0.30 DA		1214/40	405 (400-¾)	

TDZ/CL Rwy 10R and 28L  
HIRL Rwy 10R-28L and 10L-28R

**AUTHORIZATION REQUIRED**