

APP CRS  
**281°**

Rwy Idg  
**10113**

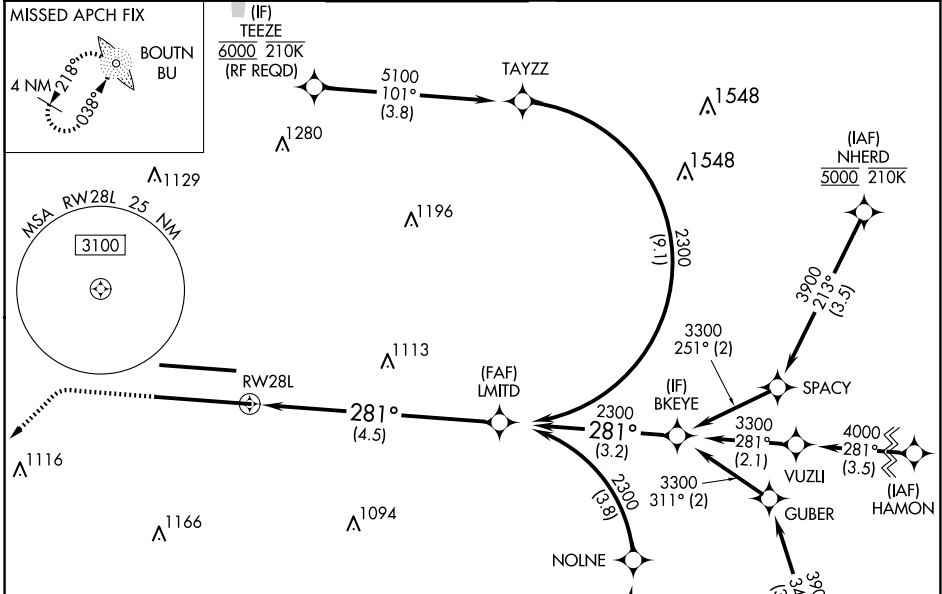
TDZE  
**815**

Apt Elev  
**815**

# RNAV (RNP) Z RWY 28L

JOHN GLENN COLUMBUS INTL (CMH)

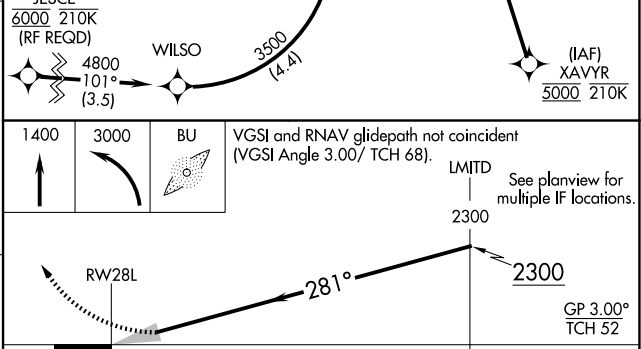
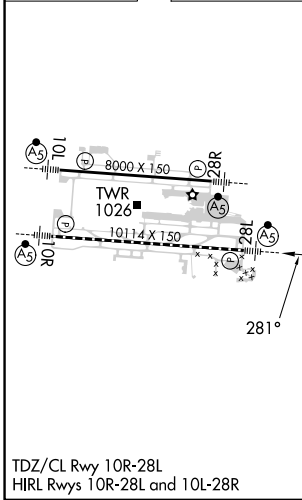
RNP AR APCH.			MALSR	MISSED APPROACH: Climb to 1400 then climbing left turn to 3000 direct BOUTN LOM and hold.	
<p><b>▼</b> For uncompensated Baro-VNAV systems, procedure NA below -19°C or above 54°C. For inop ALS, increase RNP 0.30 all Cats visibility to 1½ SM. Simultaneous approach authorized.</p>					
D-ATIS <b>124.6</b>	COLUMBUS APP CON <b>125.95 371.975</b>	COLUMBUS TOWER <b>132.7 257.8</b>	GND CON <b>121.9 348.6</b>	CLNC DEL <b>126.3</b>	CPDLC



EC-2, 20 MAR 2025 to 17 APR 2025

EC-2, 20 MAR 2025 to 17 APR 2025

ELEV 815 **D** TDZE 815



CATEGORY	A	B	C	D
RNP 0.17 DA		1147/26	332 (400-½)	
RNP 0.30 DA		1314/50	499 (500-1)	

## AUTHORIZATION REQUIRED