

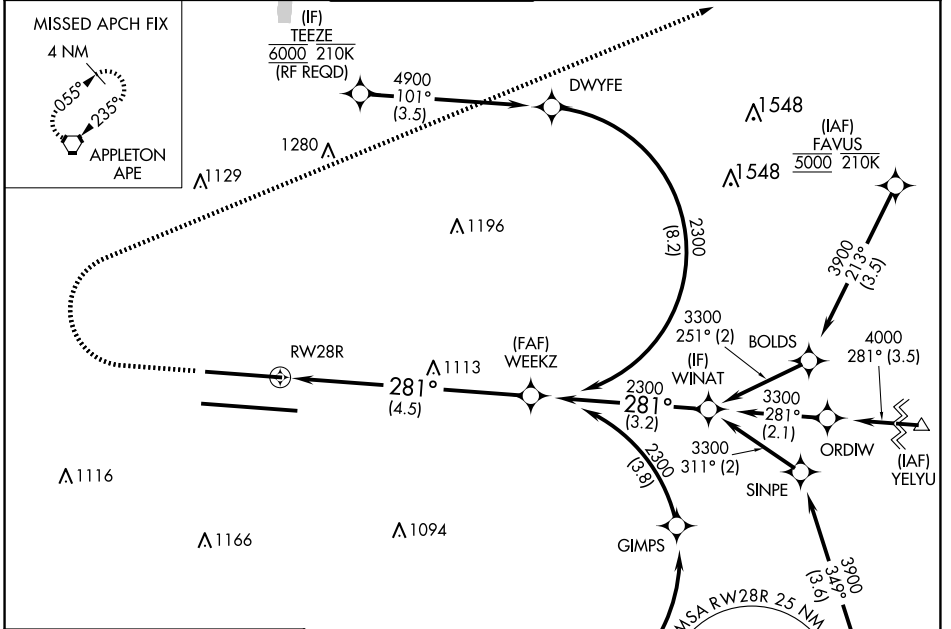
RNAV (RNP) Z RWY 28R

JOHN GLENN COLUMBUS INTL (CMH)

APP CRS	Rwy Idg	8000
281°	TDZE	813
	Apt Elev	815

RNP AR APCH.	MALSR	MISSED APPROACH: Climb to 1400 then climbing right turn to 3000 to APE VORTAC and hold.
<p>▼ For uncompensated Baro-VNAV systems, procedure NA below -19°C or above 54°C. For inop ALS, increase RNP 0.16 all Cats visibility to RVR 4500 and increase RNP 0.30 all Cats visibility to RVR 5500. Simultaneous approach authorized.</p>		

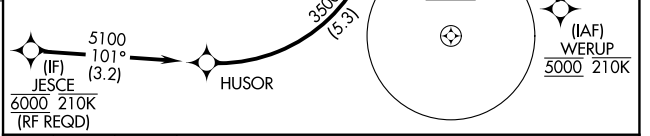
D-ATIS	COLUMBUS APP CON	COLUMBUS TOWER	GND CON	CLNC DEL	CPDLC
124.6	125.95 371.975	132.7 257.8	121.9 348.6	126.3	



EC-2, 20 MAR 2025 to 17 APR 2025

EC-2, 20 MAR 2025 to 17 APR 2025

ELEV	815	D	TDZE	813
------	------------	----------	------	------------



	WEEKZ 2300 281° 4.5 NM	See planview for multiple IF locations.
--	---------------------------------	---

RWY 28R 281° 4.5 NM	WEEKZ 2300 281° 4.5 NM	GP 3.00° TCH 50
---------------------------	---------------------------------	--------------------

CATEGORY	A	B	C	D
RNP 0.16 DA		1129/24	316 (400-½)	
RNP 0.30 DA		1185/35	372 (400-¾)	

AUTHORIZATION REQUIRED