

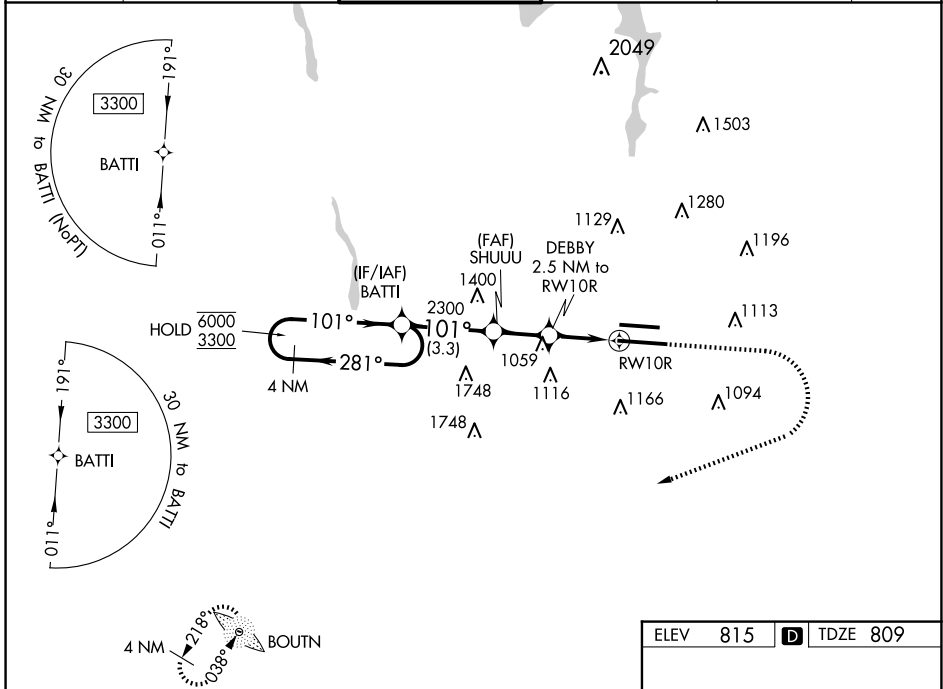
WAAS CH 99603 W10A	APP CRS 101°	Rwy Idg TDZE 809 Apt Elev 815
--	------------------------	---

RNAV (GPS) Y RWY 10R

JOHN GLENN COLUMBUS INTL (CMH)

RNP APCH.	MALSR 	MISSED APPROACH: Climb to 1400 then climbing right turn to 3000 direct BU LOM and hold.
<p>▼ For uncompensated Baro-VNAV systems, LNAV/VNAV NA below -19°C or above 54°C. LNAV procedure NA during simultaneous operations. Use of FD or AP providing RNAV track guidance required during simultaneous operations. For inop ALS, increase LNAV Cat C/D visibility to 1$\frac{1}{2}$ SM. Simultaneous approach authorized.</p>		

D-ATIS 124.6	COLUMBUS APP CON 125.95 371.975	COLUMBUS TOWER 132.7 257.8	GND CON 121.9 348.6	CLNC DEL 126.3	CPDLC
------------------------	---	--------------------------------------	-------------------------------	--------------------------	-------



EC-2, 20 MAR 2025 to 17 APR 2025

EC-2, 20 MAR 2025 to 17 APR 2025

4 NM Holding Pattern

VGSI and RNAV glidepath not coincident (VGSI Angle 3.00/TCH 70).

BATTI SHUUU DEBBY 2.5 NM to RWY10R

GP 3.00° TCH 54

*1.4 NM to RWY10R

*LNNAV only.

BU

ELEV 815	D TDZE 809
----------	-------------------

101°

TDZ/CL Rwy 10R-28L
HIRL Rwy 10R-28L and 10L-28R

CATEGORY	A	B	C	D
LPV DA		1009/18	200 (200- $\frac{1}{2}$)	
LNNAV/VNAV DA		1194/35	385 (400- $\frac{5}{8}$)	
LNNAV MDA	1320/24	511 (600- $\frac{1}{2}$)	1320/55	511 (600-1)
C CIRCLING	1340-1	525 (600-1)	1520-2 705 (800-2)	1520-2 $\frac{1}{4}$ 705 (800-2 $\frac{1}{4}$)