

BACHMAN ONE DEPARTURE
(BACH1 . TTT) 050CT23

DALLAS, TEXAS
DALLAS LOVE FLD (DAL)

LONE STAR DEP CON
118.55 290.35
D-ATIS
120.15
CLNC DEL
127.9
CPDLC
GND CON
121.75 348.6
LOVE TOWER
123.7 239.3

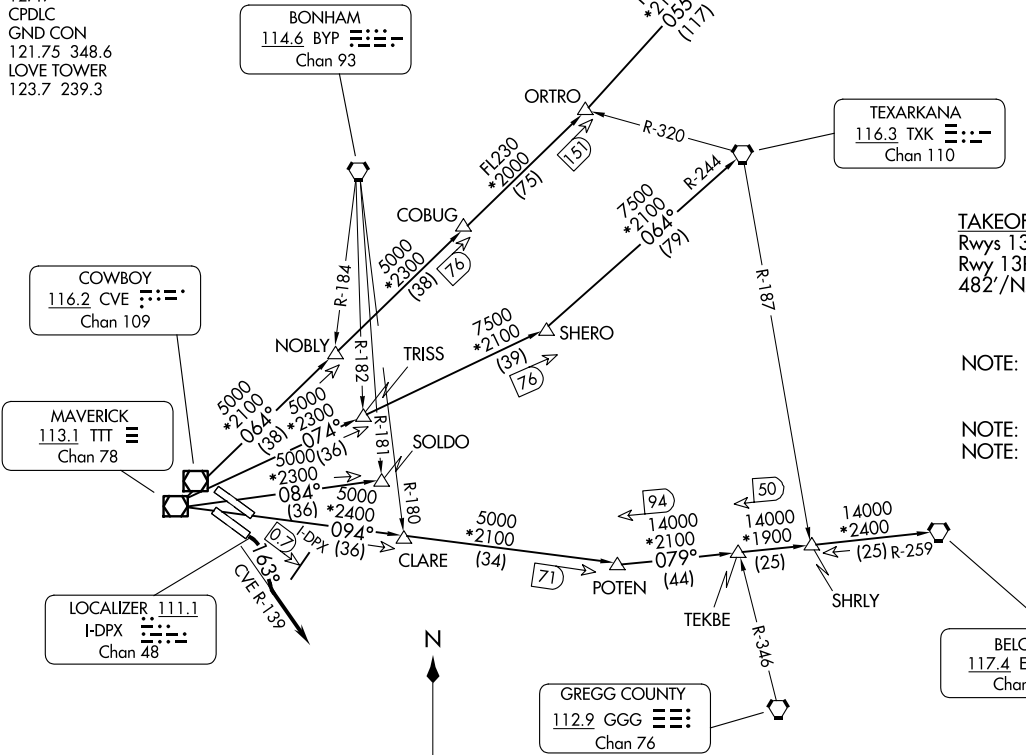
DME and RADAR required.

TOP ALTITUDE:
5000

(BACH1 . TTT) 24305
BACHMAN ONE DEPARTURE

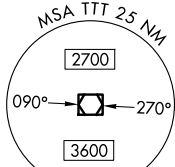
A1-106 (FAA)

DALLAS LOVE FLD (DAL)
DALLAS, TEXAS



TAKEOFF MINIMUMS
Rwys 13L, 31L/R: NA - Noise Abatement.
Rwy 13R: Standard with minimum climb of 482'/NM to 1700.

NOTE: This DP is to be used only upon assignment by Love Tower normally between 2100-0600 LCL time.
NOTE: SOLDO Transition: ATC assigned.
NOTE: BELCHER Transition: For aircraft inbound to Jackson, Monroe and Shreveport terminal areas.



NOTE: Chart not to scale.

(CONTINUED ON FOLLOWING PAGE)

BACHMAN ONE DEPARTURE



DEPARTURE ROUTE DESCRIPTION

TAKEOFF RUNWAY 13R: Climb on heading 163° no later than 0.7 DME outbound on I-DPX localizer southeast course to intercept and climb on CVE R-139 for RADAR vectors to appropriate route, unless otherwise advised maintain 5000, expect filed altitude 10 minutes after departure.

BELCHER TRANSITION (BACH1.EIC): From over TTT VOR/DME on TTT R-094 to POTEN, then on EIC R-259 to EIC VORTAC.

LITTLE ROCK TRANSITION (BACH1.LIT): From over TTT VOR/DME on TTT R-064 to ORTRO, then on LIT R-235 to LIT VORTAC.

SOLDO TRANSITION (BACH1.SOLDO): From over TTT VOR/DME on TTT R-084 to SOLDO.

TEXARKANA TRANSITION (BACH1.TXK): From over TTT VOR/DME on TTT R-074 to SHERO, then on TXK R-244 to TXK VORTAC.

SC-2, 20 MAR 2025 to 17 APR 2025

SC-2, 20 MAR 2025 to 17 APR 2025