

COYOTE FOUR DEPARTURE
(CYOTE4.TTT) 25JAN24

(CYOTE4.TTT) 24305
COYOTE FOUR DEPARTURE

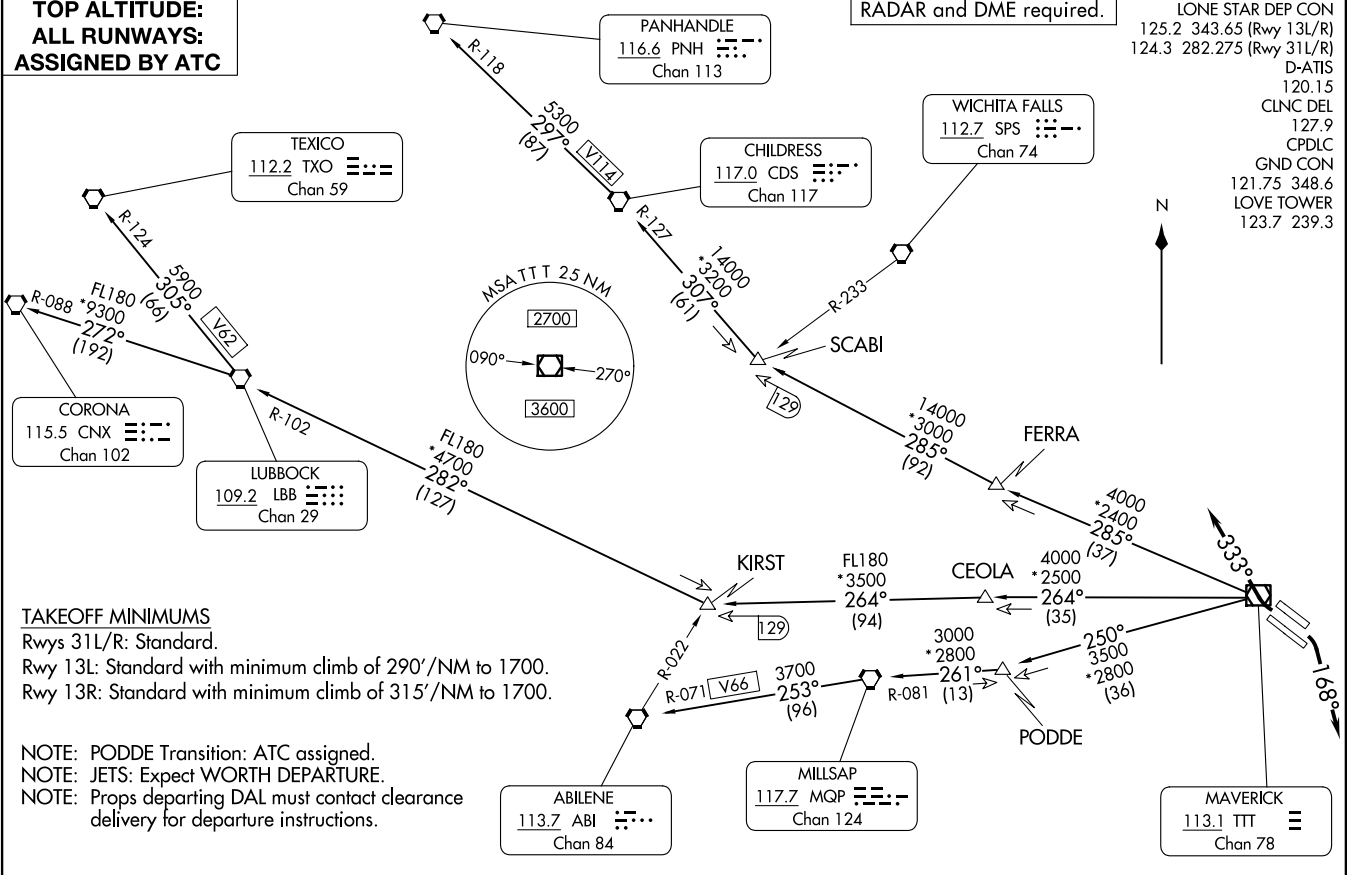
AL-106 (FAA)

DALLAS LOVE FLD (DAL)
DALLAS, TEXAS

**TOP ALTITUDE:
ALL RUNWAYS:
ASSIGNED BY ATC**

RADAR and DME required.

LONE STAR DEP CON
 125.2 343.65 (Rwy 13L/R)
 124.3 282.275 (Rwy 31L/R)
 D-ATIS 120.15
 CLNC DEL 127.9
 CPDLC GND CON 121.75 348.6
 LOVE TOWER 123.7 239.3



(CONTINUED ON FOLLOWING PAGE)

NOTE: Chart not to scale.

DALLAS, TEXAS
DALLAS LOVE FLD (DAL)

COYOTE FOUR DEPARTURE



DEPARTURE ROUTE DESCRIPTION

TAKEOFF RUNWAYS 13L/R: Climb on heading 168° for RADAR vectors to appropriate route. Maintain assigned altitude and expect filed altitude 10 minutes after departure.

TAKEOFF RUNWAYS 31L/R: Climb on heading 333° for RADAR vectors to appropriate route. Maintain assigned altitude and expect filed altitude 10 minutes after departure.

ABILENE TRANSITION (CYOTE4.ABI): From over TTT VOR/DME on TTT R-250 to PODDE, then on MQP R-081 to MQP VORTAC, then on MQP R-253 and ABI R-071 to ABI VORTAC.

CHILDRESS TRANSITION (CYOTE4.CDS): From over TTT VOR/DME on TTT R-285 to SCABI, then on CDS R-127 to CDS VORTAC.

CORONA TRANSITION (CYOTE4.CNX): From over TTT VOR/DME on TTT R-264 to KIRST, then on LBB R-102 to LBB VORTAC, then on LBB R-272 and CNX R-088 to CNX VORTAC.

LUBBOCK TRANSITION (CYOTE4.LBB): From over TTT VOR/DME on TTT R-264 to KIRST, then on LBB R-102 to LBB VORTAC.

MILLSAP TRANSITION (CYOTE4.MQP): From over TTT VOR/DME on TTT R-250 to PODDE, then on MQP R-081 to MQP VORTAC.

PANHANDLE TRANSITION (CYOTE4.PNH): From over TTT VOR/DME on TTT R-285 to SCABI, then on CDS R-127 to CDS VORTAC, then on CDS R-297 and PNH R-118 to PNH VORTAC.

PODDE TRANSITION (CYOTE4.PODDE): From over TTT VOR/DME on TTT R-250 to PODDE.

TEXICO TRANSITION (CYOTE4.TXO): From over TTT VOR/DME on TTT R-264 to KIRST, then on LBB R-102 to LBB VORTAC, then on LBB R-305 and TXO R-124 to TXO VORTAC.

SC-2, 20 MAR 2025 to 17 APR 2025

SC-2, 20 MAR 2025 to 17 APR 2025