

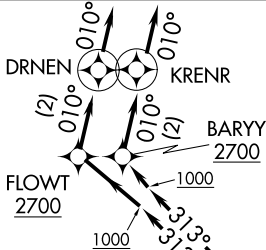
# CURLO SIX DEPARTURE (RNAV)

**TOP ALTITUDE:**  
**RWYS 13L/R: 8000**  
**RWYS 31L/R: 6000**

RNAV 1 - DME/DME/IRU  
 or GPS required.

RADAR required.

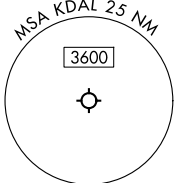
LONE STAR DEP CON  
 125.125 353.95  
 D-ATIS  
 120.15  
 CLNC DEL  
 127.9  
 CPDLC  
 GND CON  
 121.75 348.6  
 LOVE TOWER  
 123.7 239.3



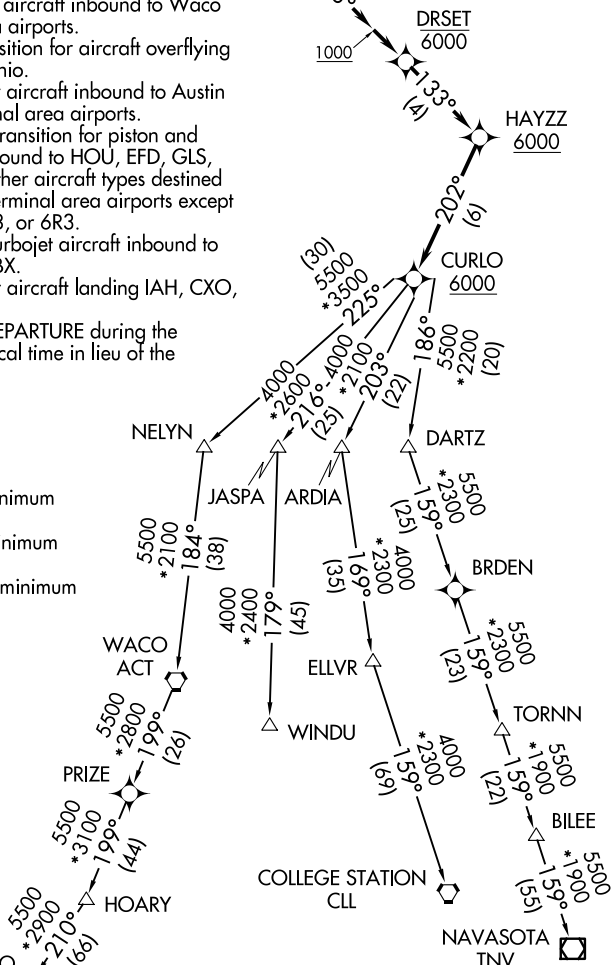
- NOTE: For use by turbojet aircraft only.
- NOTE: Props file and expect JOE POOL DEPARTURE.
- NOTE: WACO Transition for aircraft inbound to Waco or Gray terminal area airports.
- NOTE: SAN ANTONIO Transition for aircraft overflying Centex and San Antonio.
- NOTE: WINDU Transition for aircraft inbound to Austin or San Antonio terminal area airports.
- NOTE: COLLEGE STATION Transition for piston and turboprop aircraft inbound to HOU, EFD, GLS, or LBX. Also, for all other aircraft types destined to all other Houston terminal area airports except IAH, CXO, DWH, T78, or 6R3.
- NOTE: ELLVR Transition for turbojet aircraft inbound to HOU, EFD, GLS, or LBX.
- NOTE: TORNN Transition for aircraft landing IAH, CXO, DWH, T78, or 6R3.
- NOTE: Use the JOE POOL DEPARTURE during the period 2100-0600 local time in lieu of the CURLO DEPARTURE.

### TAKEOFF MINIMUMS

Rwys 13L: Standard with minimum climb of 262'/NM to 1600.  
 Rwys 13R: Standard with minimum climb of 315'/NM to 1700.  
 Rwys 31L/R: Standard with minimum climb of 500'/NM to 1000.



SAN ANTONIO  
 SAT



(CONTINUED ON FOLLOWING PAGE)

NOTE: Chart not to scale.

SC-2, 20 MAR 2025 to 17 APR 2025

SC-2, 20 MAR 2025 to 17 APR 2025

# CURLO SIX DEPARTURE (RNAV)

# CURLO SIX DEPARTURE (RNAV)



## DEPARTURE ROUTE DESCRIPTION

TAKEOFF RUNWAYS 13L/R: Climb on heading 133° to 1000, thence. . .

. . .direct to cross DRSET at or below 6000, then on track 133° to cross HAYZZ at or above 6000, then on track 202° to CURLO, then on transition. Maintain 8000. Expect filed altitude 10 minutes after departure.

TAKEOFF RUNWAY 31L: Climb on heading 313° to 1000, then direct to cross FLOWT at or above 2700, then on track 010° to DRNEN, then on track 010°, thence. . .

TAKEOFF RUNWAY 31R: Climb on heading 313° to 1000, then direct to cross BARYY at or above 2700, then on track 010° to KRENK, then on track 010°, thence. . .

. . .for vectors to cross HAYZZ at or above 6000, then on track 202° to CURLO, then on transition. Maintain 6000. Expect filed altitude 10 minutes after departure.

COLLEGE STATION TRANSITION (CURLO6.CLL)

ELLVR TRANSITION (CURLO6.ELLVR)

HOARY TRANSITION (CURLO6.HOARY)

NAVASOTA TRANSITION (CURLO6.TNV)

SAN ANTONIO TRANSITION (CURLO6.SAT)

TORNK TRANSITION (CURLO6.TORNK)

WACO TRANSITION (CURLO6.ACT)

WINDU TRANSITION (CURLO6.WINDU)

SC-2, 20 MAR 2025 to 17 APR 2025

SC-2, 20 MAR 2025 to 17 APR 2025