

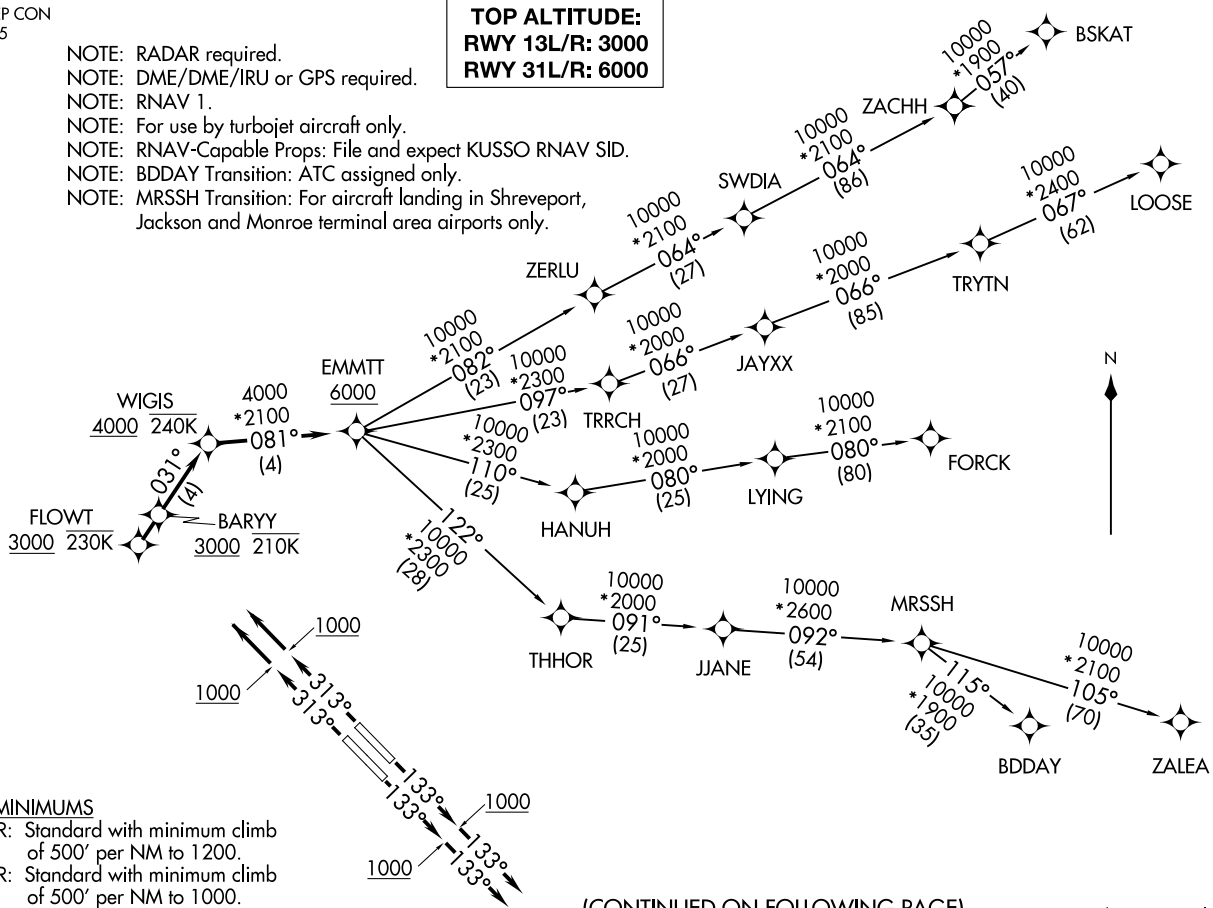
EMMTT FOUR DEPARTURE (RNAV)
 (EMMTT4,EMMTT) 31MARR16

DALLAS, TEXAS
 DALLAS LOVE FLD (DAL)

LONE STAR DEP CON
 118.55 290.35
 D-ATIS
 120.15
 CLNC DEL
 127.9
 CPDLC
 GND CON
 121.75 348.6
 LOVE TOWER
 123.7 239.3

- NOTE: RADAR required.
 NOTE: DME/DME/IRU or GPS required.
 NOTE: RNAV 1.
 NOTE: For use by turbojet aircraft only.
 NOTE: RNAV-Capable Props: File and expect KUSSO RNAV SID.
 NOTE: BDDAY Transition: ATC assigned only.
 NOTE: MRSSH Transition: For aircraft landing in Shreveport, Jackson and Monroe terminal area airports only.

TOP ALTITUDE:
RWY 13L/R: 3000
RWY 31L/R: 6000



TAKEOFF MINIMUMS

Rwys 13L/R: Standard with minimum climb of 500' per NM to 1200.
 Rwys 31L/R: Standard with minimum climb of 500' per NM to 1000.

(CONTINUED ON FOLLOWING PAGE)

NOTE: Chart not to scale.

(EMMTT4,EMMTT) 24305
 EMMTT FOUR DEPARTURE (RNAV)

AL106 (FAA)

DALLAS LOVE FLD (DAL)
 DALLAS, TEXAS

EMMTT FOUR DEPARTURE (RNAV)



DEPARTURE ROUTE DESCRIPTION

TAKEOFF RUNWAYS 13L/R: Climb heading 133° to 1000, then heading 133° or as assigned by ATC, maintain 3000, thence

. . . . expect RADAR vectors to cross WIGIS at or above 4000, then on track 081° to cross EMMTT at or above 6000, then on (transition). Expect filed altitude 10 minutes after departure.

TAKEOFF RUNWAY 31L: Climb heading 313° to 1000, then direct to cross FLOWT at or above 3000, then on track 031° to cross WIGIS at or above 4000, thence

TAKEOFF RUNWAY 31R: Climb heading 313° to 1000, then direct to cross BARYY at or above 3000, then on track 031° to cross WIGIS at or above 4000, thence

. . . . on track 081° to cross EMMTT at or above 6000, then on (transition). Maintain 6000, expect filed altitude 10 minutes after departure.

BDDAY TRANSITION (EMMTT4.BDDAY)

BSKAT TRANSITION (EMMTT4.BSKAT)

FORCK TRANSITION (EMMTT4.FORCK)

LOOSE TRANSITION (EMMTT4.LOOSE)

MRSSH TRANSITION (EMMTT4.MRSSH)

ZALEA TRANSITION (EMMTT4.ZALEA)

SC-2, 20 MAR 2025 to 17 APR 2025

SC-2, 20 MAR 2025 to 17 APR 2025