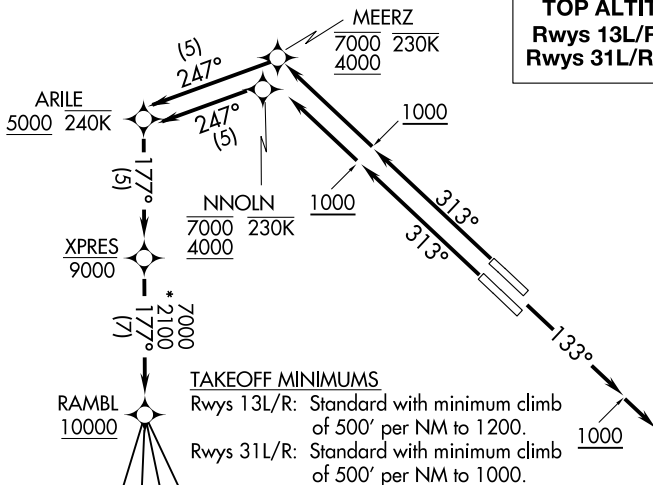


# RAMBL SIX DEPARTURE (RNAV)

LONE STAR DEP CON  
126.475 363.15  
D-ATIS  
120.15  
CLNC DEL  
127.9  
CPDLC  
GND CON  
121.75 348.6  
LOVE TOWER  
123.7 239.3

**TOP ALTITUDE:**  
Rwys 13L/R: 3000  
Rwys 31L/R: 10000

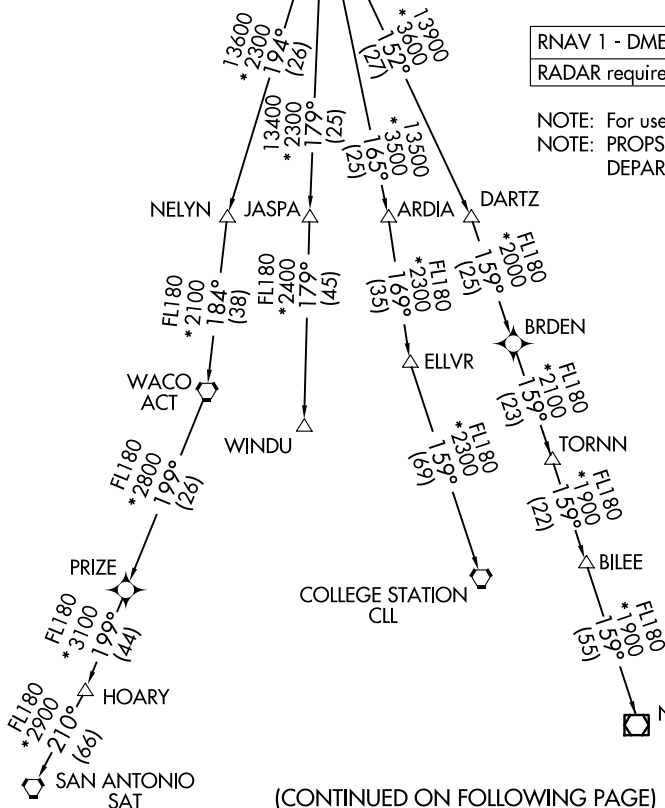


### TAKEOFF MINIMUMS

Rwys 13L/R: Standard with minimum climb of 500' per NM to 1200.  
Rwys 31L/R: Standard with minimum climb of 500' per NM to 1000.

RNAV 1 - DME/DME/IRU or GPS required.  
RADAR required.

NOTE: For use by turbojet aircraft only.  
NOTE: PROPS: File and expect JOE POOL DEPARTURE.



(CONTINUED ON FOLLOWING PAGE)

NOTE: Chart not to scale.

# RAMBL SIX DEPARTURE (RNAV)

SC-2, 20 MAR 2025 to 17 APR 2025

SC-2, 20 MAR 2025 to 17 APR 2025

# RAMBL SIX DEPARTURE (RNAV)



## DEPARTURE ROUTE DESCRIPTION

TAKEOFF RUNWAYS 13L/R: Climb on heading 133° to 1000, then on heading 133° or as assigned by ATC, maintain 3000, thence . . . .

. . . . expect RADAR vectors to cross XPRES at or below 9000, then on track 177° to cross RAMBL at or above 10000, then on (transition). Expect filed altitude 10 minutes after departure.

TAKEOFF RUNWAY 31L: Climb on heading 313° to 1000, then direct to cross NNOLN between 4000 and 7000 at or below 230K, then on track 247° to cross ARILE at or above 5000 and at or below 240K, then on track 177° to cross XPRES at or below 9000, thence . . . .

TAKEOFF RUNWAY 31R: Climb on heading 313° to 1000, then direct to cross MEERZ between 4000 and 7000 at or below 230K, then on track 247° to cross ARILE at or above 5000 and at or below 240K, then on track 177° to cross XPRES at or below 9000, thence . . . .

. . . . on track 177° to cross RAMBL at or above 10000, then on (transition). Maintain 10000. Expect filed altitude 10 minutes after departure.

COLLEGE STATION TRANSITION (RAMBL6.CLL)

ELLVR TRANSITION (RAMBL6.ELLVR)

HOARY TRANSITION (RAMBL6.HOARY)

NAVASOTA TRANSITION (RAMBL6.TNV)

SAN ANTONIO TRANSITION (RAMBL6.SAT)

TORNN TRANSITION (RAMBL6.TORNN)

WACO TRANSITION (RAMBL6.ACT)

WINDU TRANSITION (RAMBL6.WINDU)

NOTE: WACO Transition: For aircraft inbound to Waco or Gray terminal area airports.

NOTE: SAN ANTONIO Transition: For aircraft overflying Centex and San Antonio.

NOTE: WINDU Transition: For aircraft inbound to Austin or San Antonio terminal area airports.

NOTE: COLLEGE STATION Transition: For piston and turboprop aircraft inbound to William P Hobby, Ellington, Scholes Intl at Galveston, or Texas Gulf Coast Rgnl airports. All other aircraft types inbound to all other Houston terminal area airports except George Bush Intntl/Houston, Conroe/North Houston Rgnl, David Wayne Hooks Meml, Liberty Muni, or Cleveland Muni airports.

NOTE: ELLVR Transition: For turbojet aircraft inbound to William P Hobby, Ellington, Scholes Intl at Galveston, or Texas Gulf Coast Rgnl airports.

NOTE: TORNN Transition: For aircraft inbound to George Bush Intntl/Houston, Conroe/North Houston Rgnl, David Wayne Hooks Meml, Liberty Muni, or Cleveland Muni airports.

SC-2, 20 MAR 2025 to 17 APR 2025

SC-2, 20 MAR 2025 to 17 APR 2025