


APP CRS	Rwy Idg	7352
	TDZE	485
133°	Apt Elev	487

RNAV (RNP) W RWY 13L

DALLAS LOVE FLD (DAL)

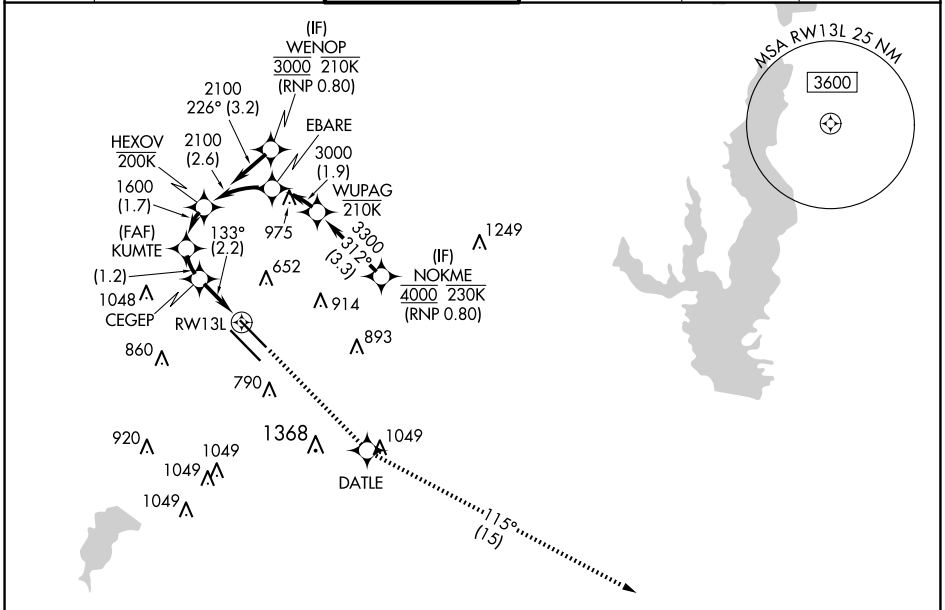
RNP AR APCH. RF required.

Simultaneous approach authorized. For uncompensated Baro-VNAV systems, procedure NA below -6°C or above 54°C. For inop ALS, increase RNP 0.11 all Cats visibility to RVR 4500.

MALSR 

MISSED APPROACH: Climb to 3000 direct DATLE and on track 115° to DUMPY and hold.

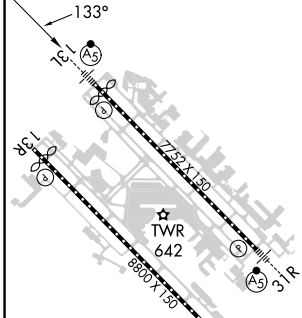
D-ATIS	LONE STAR APP CON	LOVE TOWER	GND CON	CLNC DEL	CPDLC
120.15	NORTH 124.3 282.275 SOUTH 125.2 343.65	123.7 239.3	121.75 348.6	127.9	



SC-2, 20 MAR 2025 to 17 APR 2025

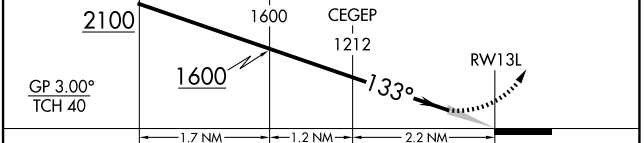
SC-2, 20 MAR 2025 to 17 APR 2025

ELEV	487	D	TDZE	485
------	------------	---	------	------------



See planview for multiple IF locations.

3000	DATLE	tr 115°	DUMPY
------	-------	---------	-------



CATEGORY	A	B	C	D
RNP 0.11 DA		754/24	269 (300-½)	
RNP 0.30 DA		846/40	361 (400-¾)	

TDZ/CL Rwy 13L and 31L
HIRL Rwy 13L-31R, and 13R-31L

AUTHORIZATION REQUIRED