

APP CRS	Rwy Idg	8310
133°	TDZE	478
	Apt Elev	487

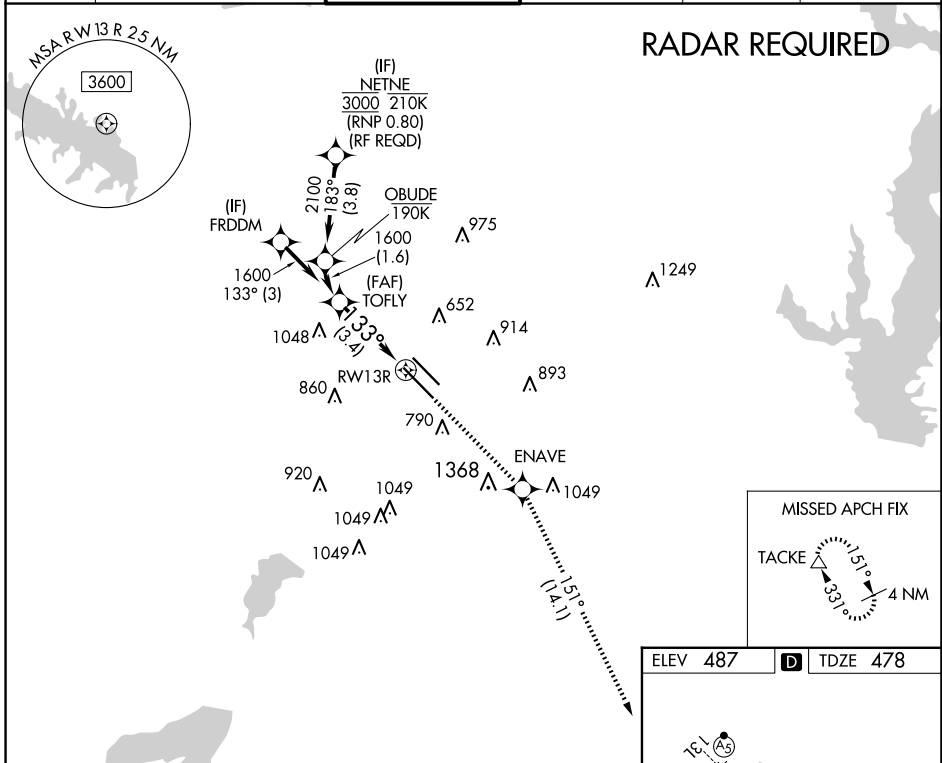
RNAV (RNP) X RWY 13R

DALLAS LOVE FLD (DAL)

▼ For uncompensated Baro-VNAV systems, procedure NA below -5°C (23°F) or above 54°C (130°F). Simultaneous approach authorized. GPS required. Use of FD or AP providing RNAV track guidance required during simultaneous operations.

MISSED APPROACH: Climb to 3000 direct ENAVE and on track 151° to TACKE and hold.

D-ATIS	LONE STAR APP CON	LOVE TOWER	GND CON	CLNC DEL	CPDLC
120.15	NORTH 124.3 282.275 SOUTH 125.2 343.65	123.7 239.3	121.75 348.6	127.9	



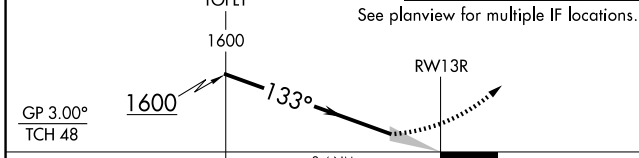
SC-2, 20 MAR 2025 to 17 APR 2025

SC-2, 20 MAR 2025 to 17 APR 2025

VGSI and RNAV glidepath not coincident (VGSI Angle 3.00/TCH 52).

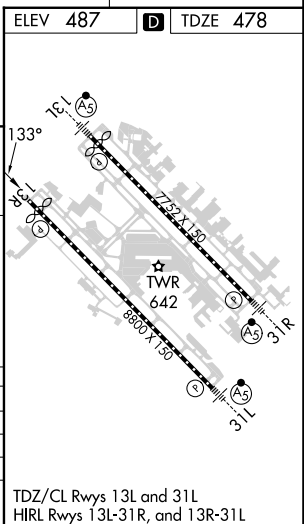
3000 ENAVE TACKE

↑ (IF) tr 151° △



CATEGORY	A	B	C	D
RNP 0.20 DA		781/50	303 (300-1)	
RNP 0.25 DA		833/60	355 (400-1½)	
RNP 0.30 DA		929-1½	451 (500-1½)	

AUTHORIZATION REQUIRED



TDZ/CL Rwy 13L and 31L
HIRL Rwy 13L-31R, and 13R-31L