


RNAV (RNP) Z RWY 31R

DALLAS LOVE FLD (DAL)

APP CRS 313°	Rwy Idg 6952 TDZE 487 Apt Elev 487
------------------------	---

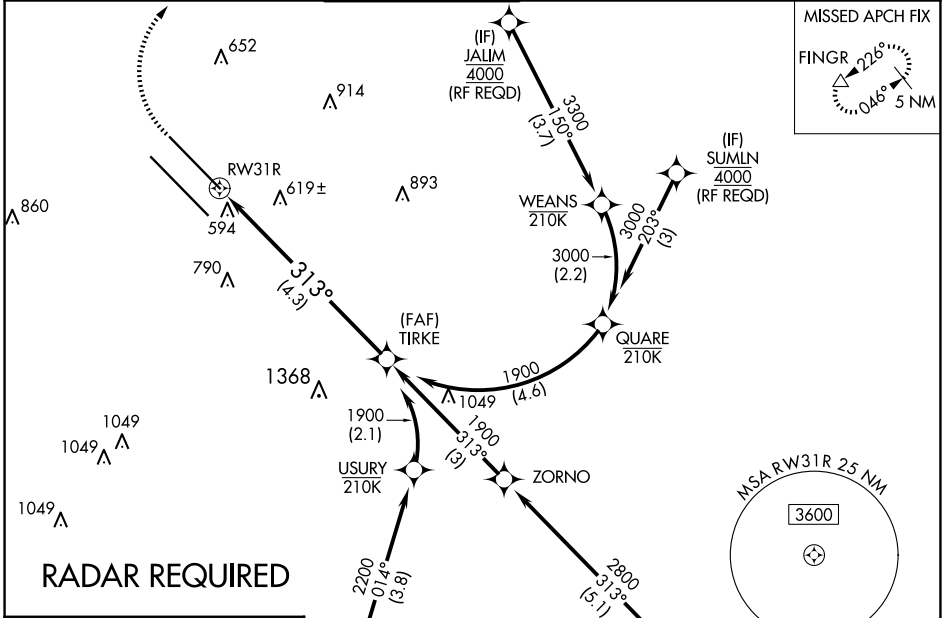
RNP AR APCH.

▼ For uncompensated Baro-VNAV systems, procedure NA below -5°C (23°F) or above 54°C (130°F). Use of FD or AP providing RNAV track guidance required during simultaneous operations. Simultaneous approach authorized.

MALSR 

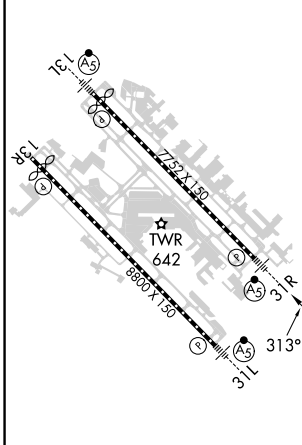
MISSED APPROACH: Climb to 900 then climbing right turn to 5000 direct FINGR and hold.

D-ATIS 120.15	LONE STAR APP CON NORTH 124.3 282.275 SOUTH 125.2 343.65	LOVE TOWER 123.7 239.3	GND CON 121.75 348.6	CLNC DEL 127.9	CPDLC
-------------------------	--	----------------------------------	--------------------------------	--------------------------	-------



RADAR REQUIRED




ELEV 487	D	TDZE 487
-----------------	----------	-----------------

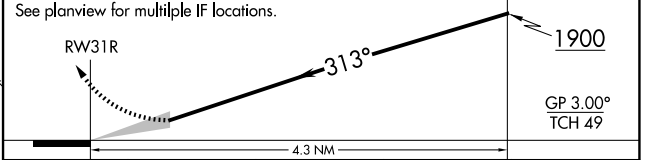


TDZ/CL Rwy 13L and 31L
HIRL Rwy 13L-31R, and 13R-31L

900 5000 FINGR

VGSI and RNAV glidepath not coincident (VGSI Angle 3.00/TCH 55).



CATEGORY	A	B	C	D
RNP 0.16 DA		796/24	309 (400-½)	
RNP 0.30 DA		895/45	408 (500-¾)	

AUTHORIZATION REQUIRED

SC-2, 20 MAR 2025 to 17 APR 2025

SC-2, 20 MAR 2025 to 17 APR 2025