

# RNAV (GPS) Y RWY 31R

DALLAS LOVE FLD (DAL)

WAAS CH <b>87123</b> <b>W31B</b>	APP CRS <b>313°</b>	Rwy Idg <b>6952</b> TDZE <b>487</b> Apt Elev <b>487</b>
--	------------------------	---

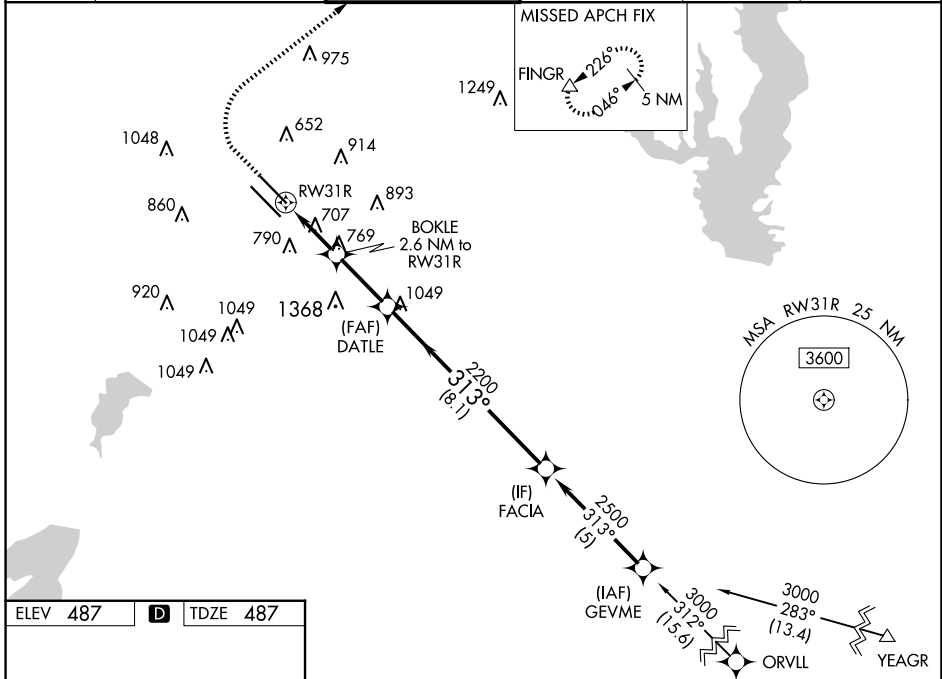
RNP APCH-GPS

**▽** Simultaneous approach authorized. For uncompensated Baro-VNAV systems, LNAV/VNAV NA below -6°C or above 54°C. LNAV procedure NA during simultaneous operations.  
**▲** Use of FD or AP providing RNAV track guidance required during simultaneous operations.  
 For inop ALS, increase LNAV visibility Cat C/D to 1½ SM.  
 \*\* RVR 1800 authorized with use of FD or AP or HUD to DA.

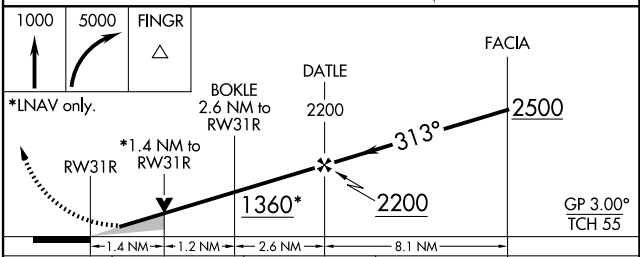
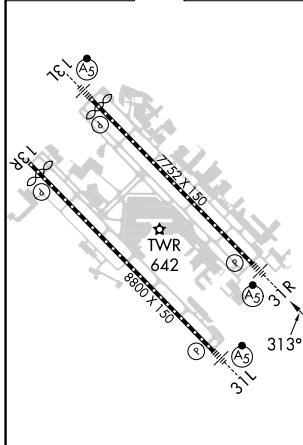


**MISSED APPROACH:**  
Climb to 1000 then climbing right turn to 5000 direct FINGR and hold.

D-ATIS <b>120.15</b>	LONE STAR APP CON NORTH <b>124.3 282.275</b> SOUTH <b>125.2 343.65</b>	LOVE TOWER <b>123.7 239.3</b>	GND CON <b>121.75 348.6</b>	CLNC DEL <b>127.9</b>	CPDLC
-------------------------	--	----------------------------------	--------------------------------	--------------------------	-------



ELEV <b>487</b>	<b>D</b>	TDZE <b>487</b>
-----------------	----------	-----------------



CATEGORY	A	B	C	D
LPV DA **		687/24	200 (200-½)	
LNAV/VNAV DA		873/35	386 (400-½)	
LNAV MDA	980/24	493 (500-½)	980/50	493 (500-1)
<b>C</b> CIRCLING	1080-1 593 (600-1)	1140-1 653 (700-1)	1220-2 733 (800-2)	1520-3 1033 (1100-3)

TDZ/CL Rwy 13L and 31L  
HIRL Rwy 13L-31R, and 13R-31L