

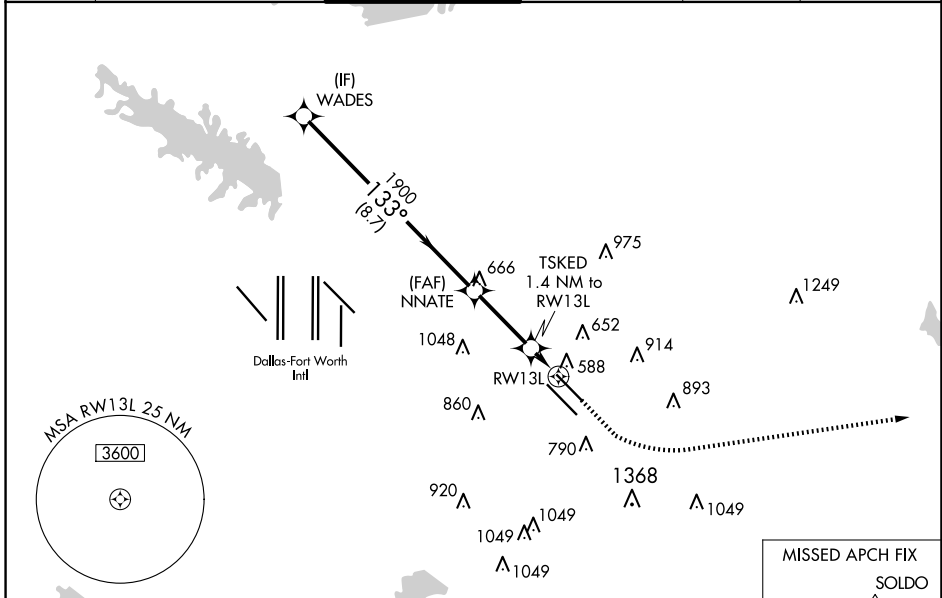
WAAS CH <b>99723</b> <b>W13B</b>	APP CRS <b>133°</b>	Rwy Idg <b>7352</b> TDZE <b>485</b> Apt Elev <b>487</b>
--	------------------------	---

# RNAV (GPS) Z RWY 13L

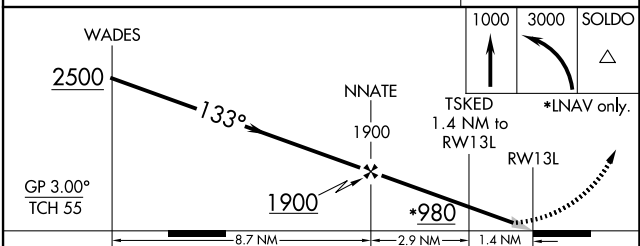
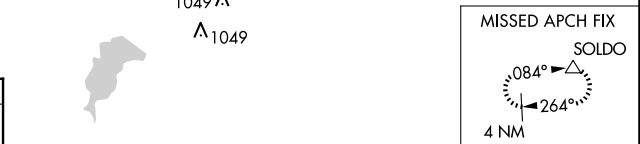
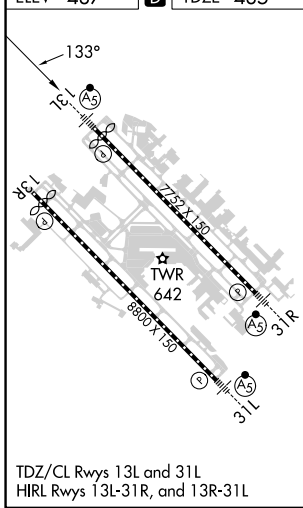
DALLAS LOVE FLD (DAL)

RNP APCH.	<p>Simultaneous approach authorized. Use of FD or AP required during simultaneous operations.</p> <p>LNVA procedure NA during simultaneous operations. For uncompensated Baro-VNAV systems, procedure NA below -6°C or above 54°C. For inop ALS, increase LNAV/VNAV all Cats visibility to RVR 4500 and LNAV Cats C/D visibility to RVR 5500.</p>	<p>MALSRL</p>	<p>MISSED APPROACH:</p> <p>Climb to 1000 then climbing left turn to 3000 direct SOLDO and hold.</p>
-----------	---	---------------	---

D-ATIS <b>120.15</b>	LONE STAR APP CON NORTH <b>124.3 282.275</b> SOUTH <b>125.2 343.65</b>	LOVE TOWER <b>123.7 239.3</b>	GND CON <b>121.75 348.6</b>	CLNC DEL <b>127.9</b>	CPDLC
-------------------------	--	----------------------------------	--------------------------------	--------------------------	-------



ELEV <b>487</b>	<b>D</b>	TDZE <b>485</b>
-----------------	----------	-----------------



CATEGORY	A	B	C	D
LPV DA		685/18	200 (200-½)	
LNAV/VNAV DA		764/24	279 (300-½)	
LNAV MDA	840/24	355 (400-½)	840/30	355 (400-¾)
<b>C</b> CIRCLING	1000-1 513 (600-1)	1140-1 653 (700-1)	1220-2 733 (800-2)	1520-3 1033 (1100-3)

SC-2, 20 MAR 2025 to 17 APR 2025

SC-2, 20 MAR 2025 to 17 APR 2025