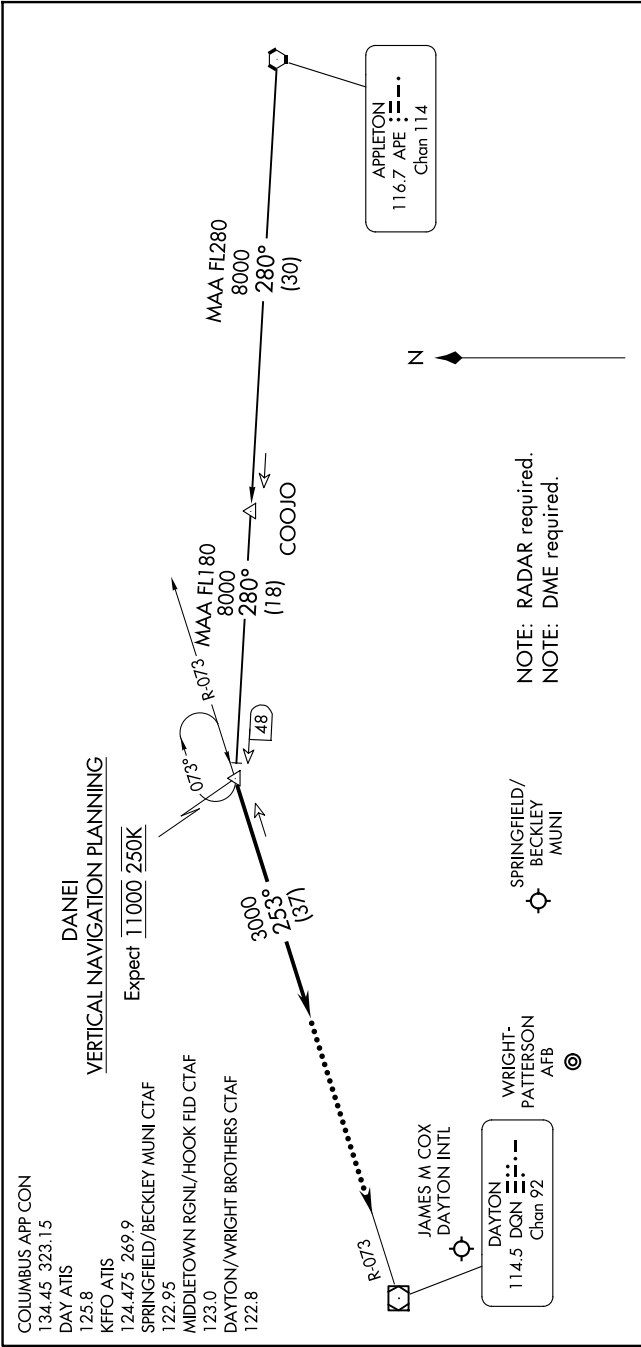


EC-2, 20 MAR 2025 to 17 APR 2025



NOTE: RADAR required.  
NOTE: DME required.

APPLETON TRANSITION (APE.DANEI3): From over APE VORTAC on APE R-280 to DANEI. Thence....

....From over DANEI on heading 253°. Expect RADAR vectors to final approach course.

LOST COMMUNICATIONS:  
In the event of lost communications: At DANEI, proceed direct DQN VOR/DME maintain 3000' until DQN VOR/DME.

NOTE: Chart not to scale.

EC-2, 20 MAR 2025 to 17 APR 2025