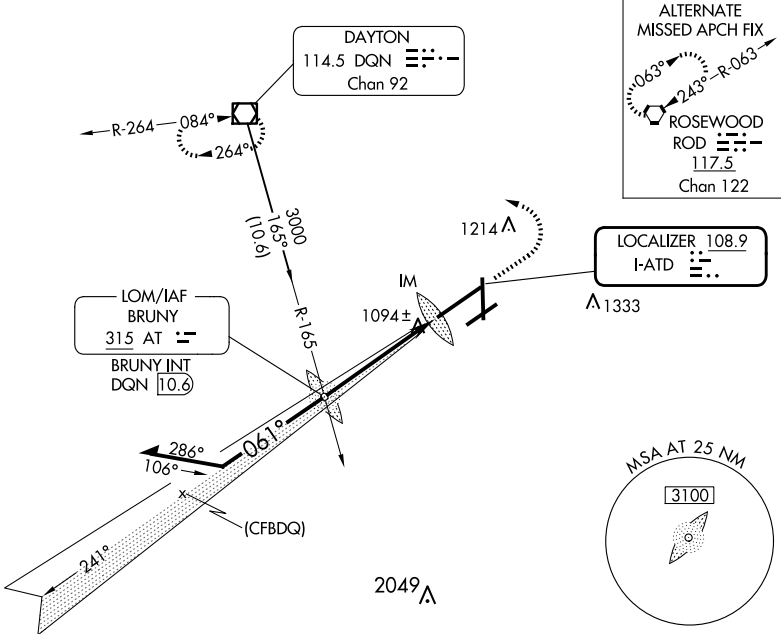


LOC I-ATD <b>108.9</b>	APP CRS <b>061°</b>	Rwy Idg <b>10900</b> TDZE <b>998</b> Apt Elev <b>1009</b>
---------------------------	------------------------	---

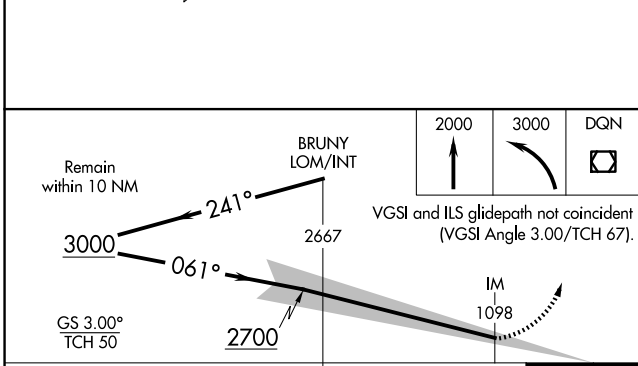
**ILS RWY 6L (CAT II & III)**  
JAMES M COX DAYTON INTL (DAY)

<p>Simultaneous approach authorized. CAT II: RVR 1000 authorized with specific OPSPEC, MSPEC, or LOA approval and use of autoland or HUD to touchdown.</p>		<p>ALSIF-2</p>	<p>MISSED APPROACH: Climb to 2000 then climbing left turn to 3000 direct DQN VOR/DME and hold.</p>	
<p>ATIS <b>125.8</b></p>	<p>COLUMBUS APP CON <b>134.45 323.15</b></p>	<p>DAYTON TOWER <b>119.9 257.7</b></p>	<p>GND CON <b>121.9</b></p>	<p>CINC DEL <b>121.75</b></p>



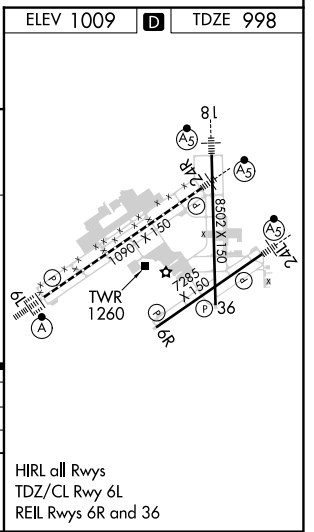
EC-2, 20 MAR 2025 to 17 APR 2025

EC-2, 20 MAR 2025 to 17 APR 2025



CATEGORY	A	B	C	D
S-ILS 6L	CAT II RA 99/12		100 DA 1098	
S-ILS 6L		CAT III	RVR 06	

**CATEGORY II & III ILS - SPECIAL AIRCREW & AIRCRAFT CERTIFICATION REQUIRED**



HIRL all Rwys  
TDZ/CL Rwy 6L  
REIL Rwys 6R and 36