

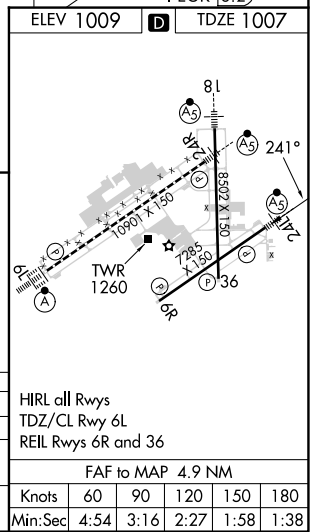
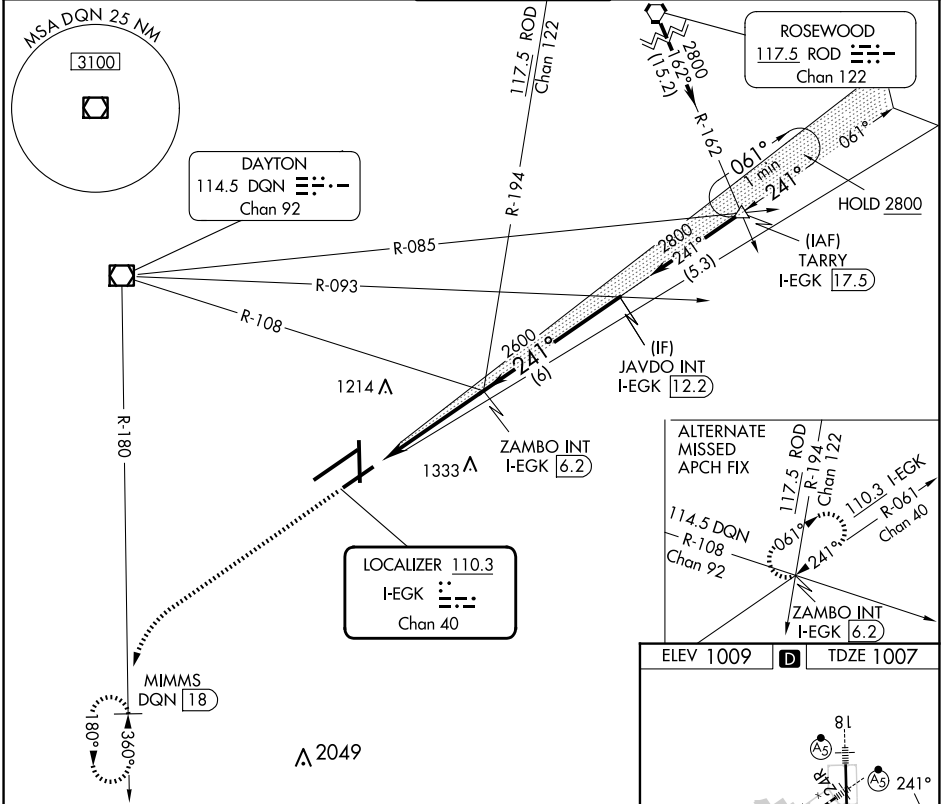
LOC I-EGK <b>110.3</b> Chan 40	APP CRS <b>241°</b>	Rwy ldg TDZE Apt Elev <b>7001</b> <b>1007</b> <b>1009</b>
--------------------------------------	------------------------	--

# ILS or LOC RWY 24L

JAMES M COX DAYTON INTL (DAY)

DME required.		MALSR	MISSED APPROACH: Climb to 3000 on heading 241° and DQN R-180 to MIMMS/DQN 18 DME and hold.	
Simultaneous approach authorized. # RVR 1800 authorized with use of FD or AP or HUD to DA.				

ATIS <b>125.8</b>	COLUMBUS APP CON <b>134.45 323.15</b>	DAYTON TOWER <b>119.9 257.7</b>	GND CON <b>121.9</b>	CLNC DEL <b>121.75</b>
----------------------	--	------------------------------------	-------------------------	---------------------------



VGSi and ILS glidepath not coincident (VGSi Angle 3.00/TCH 54).		JAVDO INT I-EGK [12.2]		
ZAMBO INT I-EGK [6.2]				
2600		2800		
2600				
241°				
2600				
GS 3.00° TCH 50				
CATEGORY	A	B	C	D
S-ILS 24L #	1207/24		200 (200-½)	
S-LOC 24L	1440/24 433 (500-½)		1440/40 433 (500-¾)	
CIRCLING	1580-1 571 (600-1)		1580-1½ 571 (600-1½)	
			1640-2 631 (700-2)	

EC-2, 20 MAR 2025 to 17 APR 2025

EC-2, 20 MAR 2025 to 17 APR 2025