

WAAS CH 50414 W24A	APP CRS 241°	Rwy Idg TDZE Apt Elev	7001 1007 1009
--	------------------------	-----------------------------	---

RNAV (GPS) RWY 24L

JAMES M COX DAYTON INTL (DAY)

RNP APCH.

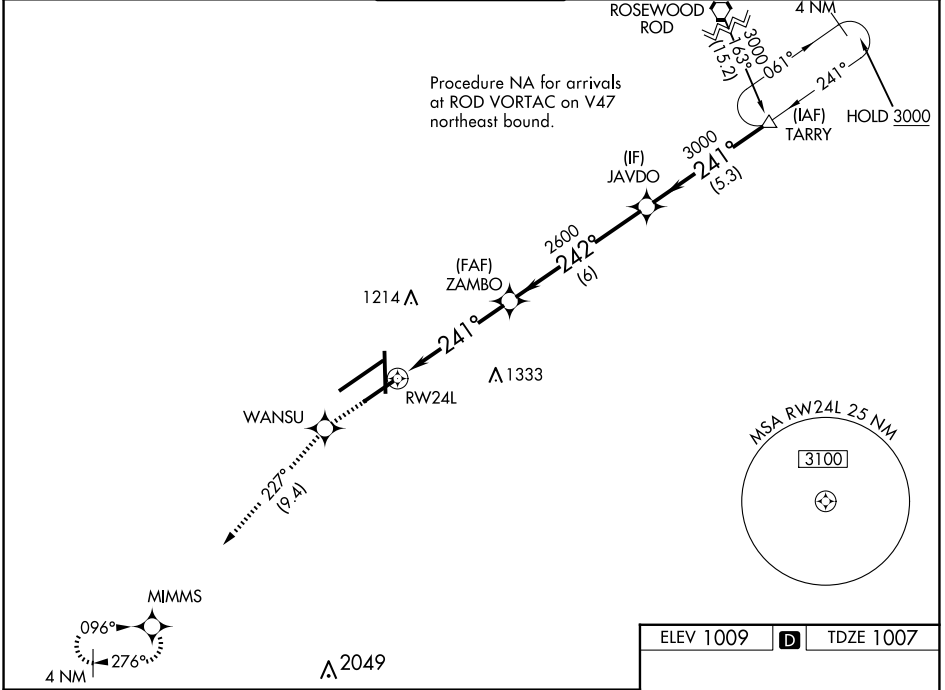
Simultaneous approach authorized. LNAV procedure NA during simultaneous operations. For uncompensated Baro-VNAV systems, LNAV/VNAV NA below -19°C or above 54°C. Use of FD or AP required during simultaneous operations. For inop ALS, increase LNAV/VNAV all Cats RVR to 4300. **RVR 1800 authorized with use of FD or AP or HUD to DA.

MALSR



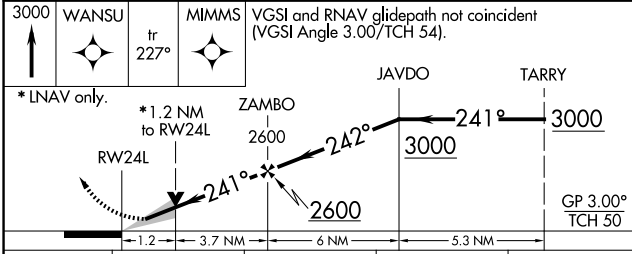
MISSED APPROACH:
Climb to 3000 direct
WANSU and on
track 227° to
MIMMS and hold.

ATIS 125.8	COLUMBUS APP CON 134.45 323.15	DAYTON TOWER 119.9 257.7	GND CON 121.9	CLNC DEL 121.75
----------------------	--	------------------------------------	-------------------------	---------------------------

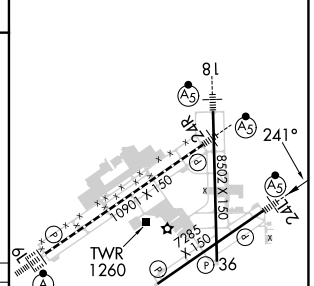


EC-2, 20 MAR 2025 to 17 APR 2025

EC-2, 20 MAR 2025 to 17 APR 2025



ELEV 1009	D	TDZE 1007
-----------	----------	-----------



CATEGORY	A	B	C	D
LPV DA**	1207/24		200 (200-½)	
LNAV/VNAV DA	1327/24		320 (400-½)	
LNAV MDA	1440/24 433 (500-½)		1440/40 433 (500-¾)	
C CIRCLING	1580-1 571 (600-1)		1580-1½ 571 (600-1½) 1640-2 631 (700-2)	

HIRL all Rwys
TDZ/CL Rwy 6L
REIL Rwys 6R and 36