

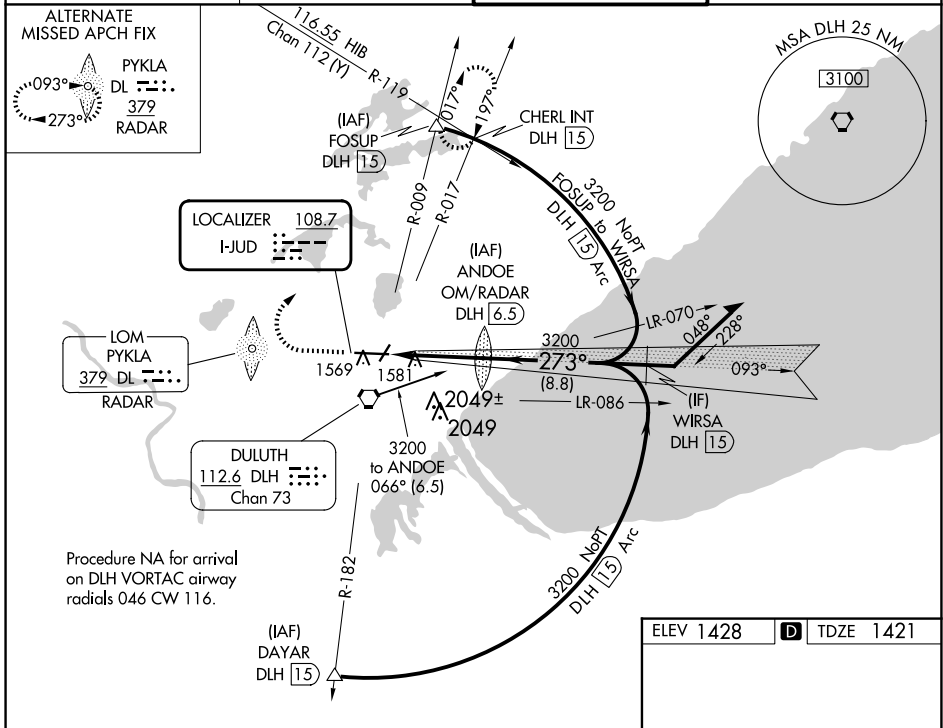
LOC I-JUD 108.7	APP CRS 273°	Rwy ldg 10062 TDZE 1421 Apt Elev 1428
---------------------------	------------------------	--

ILS or LOC RWY 27

DULUTH INTL (DLH)

DME or RADAR required for procedure entry.	MALSR 	MISSED APPROACH: Climb to 3000 then climbing right turn to 4500 on heading 060° and DLH VORTAC R-017 to CHERL INT/ DLH 15 DME and hold.
Circling NA for Cat E southeast of Rwy 3 and 27. Inop table does not apply to S-ILS 27. For inop ALS, increase S-LOC 27 Cat E visibility to 1 1/4 SM.		

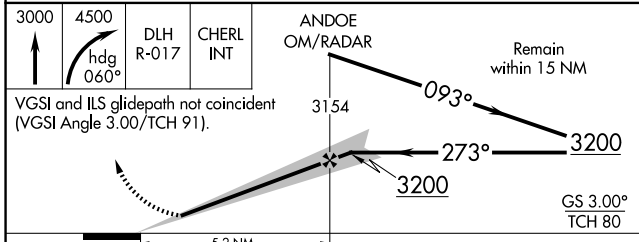
ATIS 124.1 270.1	DULUTH APP CON 125.45 233.7	DULUTH TOWER 118.3 257.8	GND CON 121.9 348.6
----------------------------	---------------------------------------	------------------------------------	-------------------------------



NC-1, 20 MAR 2025 to 17 APR 2025

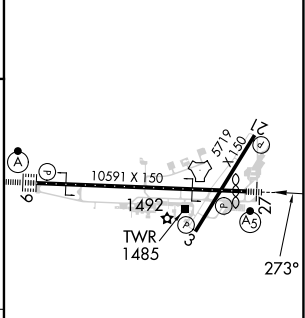
NC-1, 20 MAR 2025 to 17 APR 2025

Procedure NA for arrival on DLH VORTAC airway radials 046 CW 116.



ELEV 1428	D TDZE 1421
-----------	--------------------

CATEGORY	A	B	C	D	E
	S-ILS 27	1621/40 200 (200-3/4)	1651/40 230 (300-3/4)		
S-LOC 27	1860/24 439 (500-1/2)	1860/40 439 (500-3/4)			
CIRCLING	1880-1 452 (500-1)	1900-1 472 (500-1)	1940-1 1/2 512 (600-1 1/2)	2400-3	972 (1000-3)



TDZ/CL Rwy 9	REIL Rwy 3 and 21	HIRL Rwy 9-27	MIRL Rwy 3-21		
FAF to MAP 5.2 NM					
Knots	60	90	120	150	180
Min:Sec	5:12	3:28	2:36	2:05	1:44