

LOC I-DLH <b>110.3</b>	APP CRS <b>093°</b>	Rwy Idg <b>10062</b> TDZE <b>1428</b> Apt Elev <b>1428</b>
---------------------------	------------------------	------------------------------------------------------------------

# ILS or LOC RWY 9

DULUTH INTL (DLH)

**⚠** Circling NA for Cat E southeast of Rwy 3-27. ADF or RADAR required. For inop ALS, increase S-ILS 9 Cat E visibility to RVR 4000 and S-LOC 9 Cat C/D/E visibility to 1½ SM.

ALSF-2



**MISSED APPROACH:** Climb to 3000 then climbing left turn to 4500 on heading 320° and on DLH VORTAC R-017 to CHERL INT/DLH 15 DME and hold.

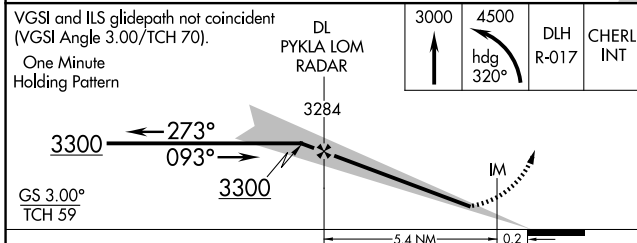
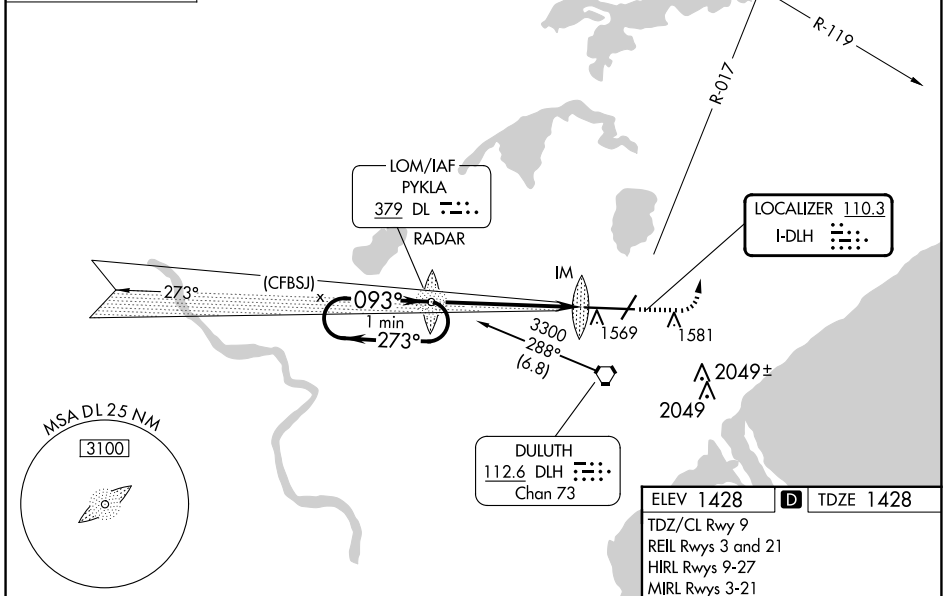
ATIS <b>124.1 270.1</b>	DULUTH APP CON <b>125.45 233.7</b>	DULUTH TOWER <b>118.3 257.8</b>	GND CON <b>121.9 348.6</b>
----------------------------	---------------------------------------	------------------------------------	-------------------------------

ALTERNATE MISSED APCH FIX

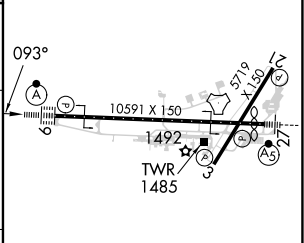
ADF or RADAR REQUIRED

PYKLA  
DL 379  
RADAR

ADF or RADAR REQUIRED



ELEV 1428	<b>D</b> TDZE 1428
TDZ/CL Rwy 9	
REIL Rwy 3 and 21	
HIRL Rwy 9-27	
MRL Rwy 3-21	



CATEGORY	A	B	C	D	E
S-ILS 9	1628/18 200 (200-½)				
S-LOC 9	1960/24	532 (600-½)	1960/55	532 (600-1)	
<b>C</b> CIRCLING	1960-1	532 (600-1)	1960-1½ 532 (600-1½)	2400-3	972 (1000-3)

FAF to MAP 5.6 NM					
Knots	60	90	120	150	180
Min:Sec	5:36	3:44	2:48	2:14	1:52

NC-1, 20 MAR 2025 to 17 APR 2025

NC-1, 20 MAR 2025 to 17 APR 2025