

TACAN LKI Chan <b>11</b> <b>(135.4)</b>	APP CRS <b>087°</b>	Rwy ldg <b>10062</b> TDZE <b>1428</b> Apt Elev <b>1428</b>
---	------------------------	--

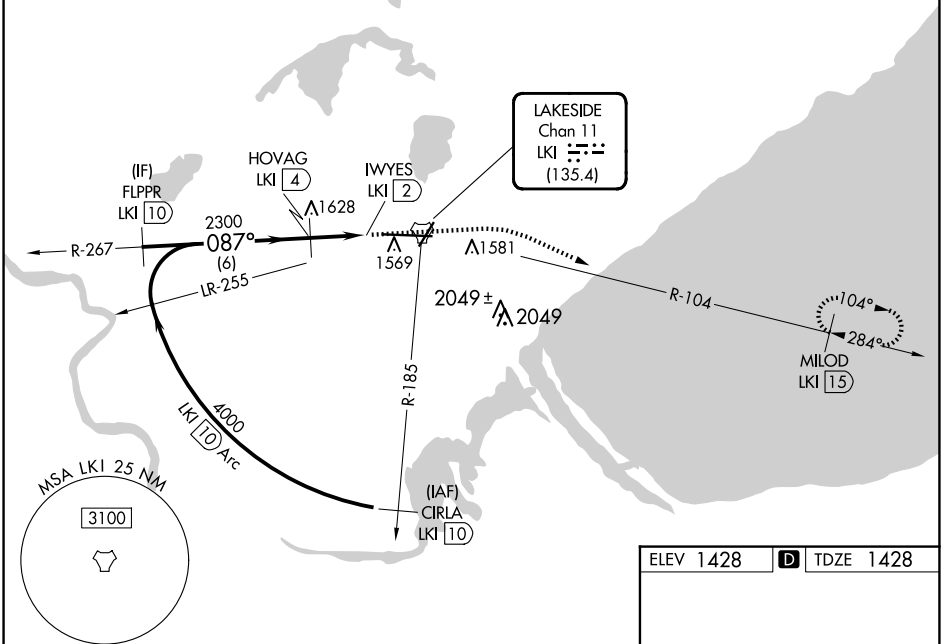
# TACAN Y RWY 9

DULUTH INTL (DLH)

RADAR required for procedure entry.		ALSIF-2 	MISSED APPROACH: Climb to 2500, then climbing right turn to 4000 on LKI TACAN R-104 to MILOD/1.5 DME and hold.
 * For inop ALS, increase S-9 Cat E visibility to 1 3/8 SM. # Circling NA for Cats D and E southeast of Rwys 3 and 27.			

ATIS <b>124.1 270.1</b>	DULUTH APP CON <b>125.45 233.7</b>	DULUTH TOWER <b>118.3 257.8</b>	GND CON <b>121.9 348.6</b>
----------------------------	---------------------------------------	------------------------------------	-------------------------------

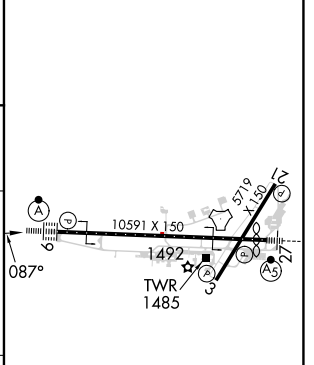
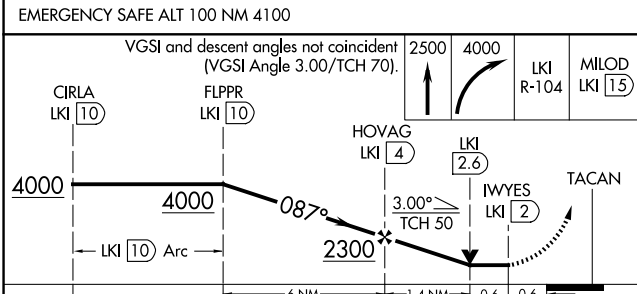
CAUTION: Do not select channel 73 "DLH" for channel 11 "LKI".  
Towers 2049' on R-099 channel 73 "DLH".



NC-1, 20 MAR 2025 to 17 APR 2025

NC-1, 20 MAR 2025 to 17 APR 2025

ELEV 1428	<b>D</b> TDZE 1428
-----------	--------------------



CATEGORY	A	B	C	D	E
S-9*	1880/24	452 (500-1/2)	1880/45	452 (500-7/8)	
<b>C</b> CIRCLING#	1920-1	492 (500-1)	1940-1 1/2 512 (600-1 1/2)	2020-2 592 (600-2)	2060-2 1/4 632 (700-2 1/4)

TDZ/CL Rwy 9
REIL Rwys 3 and 21
HIRL Rwys 9-27
MIRL Rwys 3-21