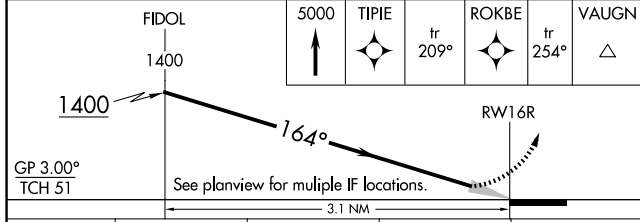
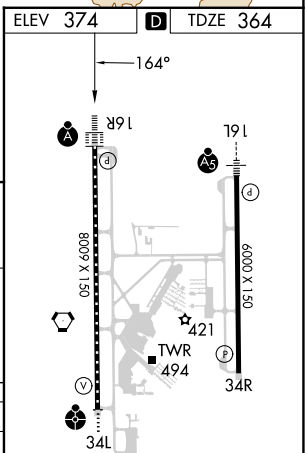
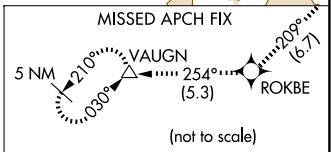
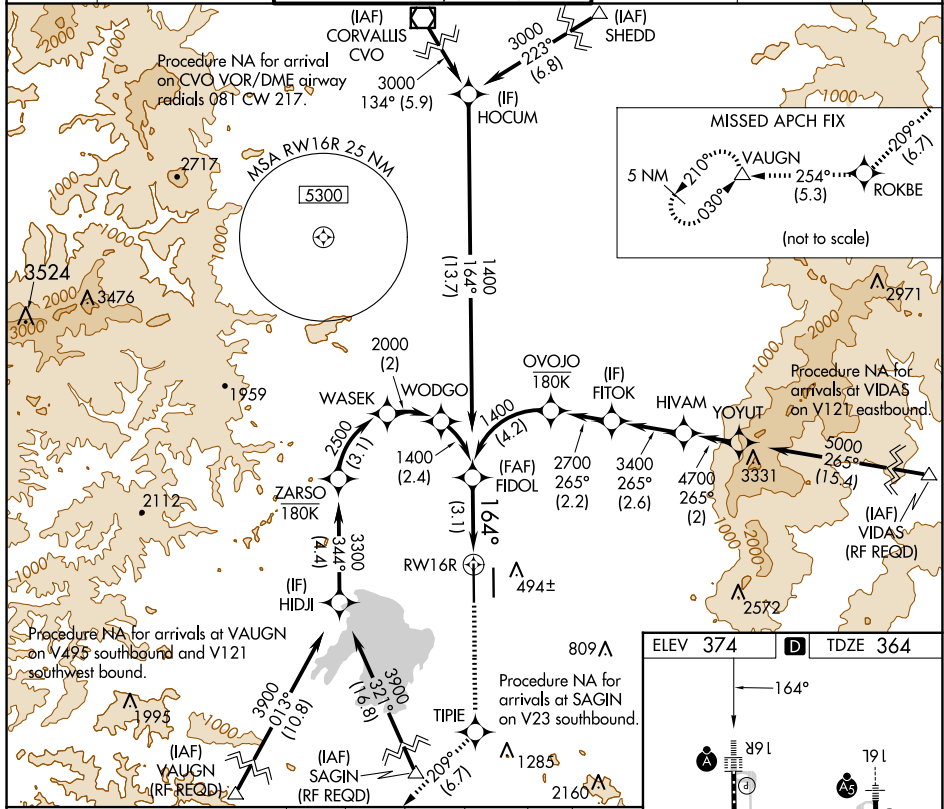


APP CRS	Rwy Idg	8009
164°	TDZE	364
	Apt Elev	374

RNAV (RNP) Z RWY 16R

MAHLON SWEET FLD (EUG)

RNP AR APCH.		EUGENE TOWER ★		GND CON	CLNC DEL	UNICOM
<p>▼ For uncompensated Baro-VNAV systems, procedure NA below -9°C or above 54°C. Simultaneous approach authorized. For inop ALS, increase RNP 0.17 all Cats visibility to RVR 4000 and RNP 0.30 all Cats visibility to RVR 5500.</p>		<p>118.9 (CTAF) 0 371.9 (Rwy 16R/34L) 124.15 371.9 (Rwy 16L/34R)</p>		121.7 269.5	121.7 269.5	122.95
ATIS	CASCADE APP CON ★					
125.225	119.6 348.7					



CATEGORY	A	B	C	D
RNP 0.17 DA		614/24	250 (300-½)	
RNP 0.30 DA		711/30	347 (400-¾)	

AUTHORIZATION REQUIRED

NW-1, 20 MAR 2025 to 17 APR 2025

NW-1, 20 MAR 2025 to 17 APR 2025