

WAAS CH 81900 W34B	APP CRS 344°	Rwy ldg TDZE Apt Elev	6000 374 374
--	------------------------	-----------------------------	---

RNAV (GPS) Y RWY 34R

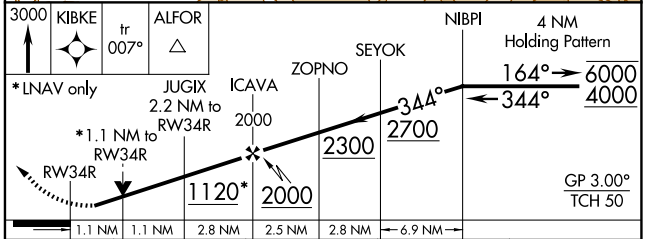
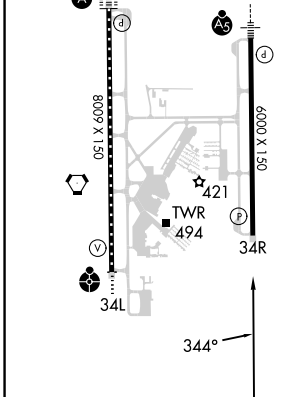
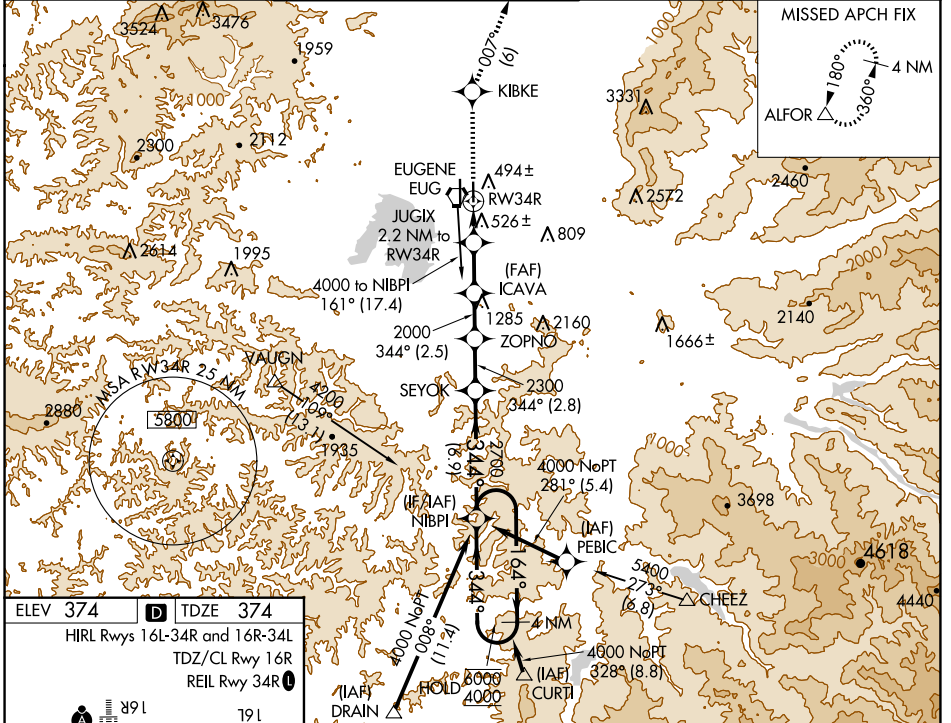
MAHLON SWEET FLD (EUG)

RNP APCH.

Simultaneous approach authorized. LNAV procedure NA during simultaneous operations.
 Use of FD or AP providing RNAV track guidance required during simultaneous operations.
 Rwy 34R helicopter visibility reduction below 3/4 SM NA. For uncompensated Baro-VNAV systems, LNAV/VNAV NA below -10°C or above 54°C.

MISSED APPROACH: Climb to 3000 direct KIBKE then on track 007° to ALFOR and hold.

ATIS 125.225	CASCADE APP CON ★ 119.6 348.7	EUGENE TOWER★ 118.9 (CTAF) 371.9 (Rwy 16R/34L) 124.15 371.9 (Rwy 16L/34R)	GND CON 121.7 269.5	CLNC DEL 121.7 269.5	UNICOM 122.95
------------------------	---	---	-------------------------------	--------------------------------	-------------------------



CATEGORY	A		B		C		D	
LPV DA			636-7/8		262 (300-7/8)			
LNAV/VNAV DA			661-7/8		287 (300-7/8)			
LNAV MDA	780-1		406 (500-1)		780-1 1/8		406 (500-1 1/8)	
CIRCLING	820-1		840-1		1000-1 3/4		1140-2 1/2	
	446 (500-1)		466 (500-1)		626 (700-1 3/4)		766 (800-2 1/2)	

NW-1, 20 MAR 2025 to 17 APR 2025

NW-1, 20 MAR 2025 to 17 APR 2025