

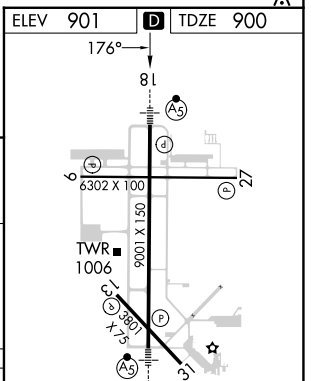
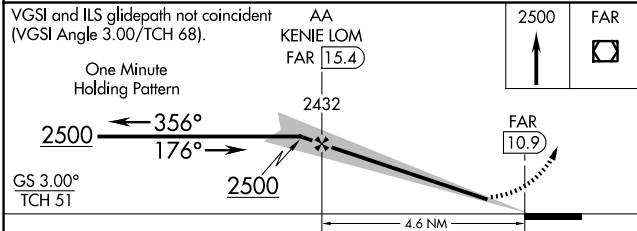
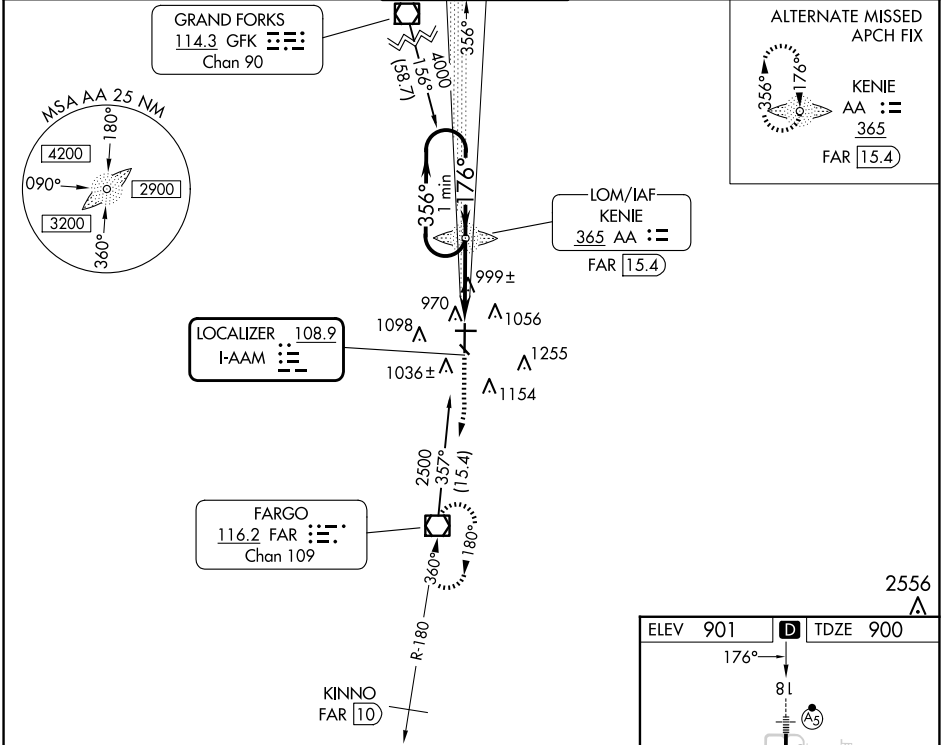
LOC I-AAM 108.9	APP CRS 176°	Rwy Idg 9001	TDZE 900	Apt Elev 901
---------------------------	------------------------	-----------------	-------------	-----------------

ILS or LOC RWY 18

HECTOR INTL (FAR)

ADF or DME required for procedure entry.		MALSR	MISSED APPROACH: Climb to 2500 direct FAR VOR/DME and hold.
<p>⚠ For inop MALSR, increase S-ILS 18 Cat E visibility to RVR 4000, and S-LOC 18 Cat E visibility to RVR 5000.</p> <p>* Visibility Cat A/B/C/D RVR 1800 authorized with the use of FD or AP or HUD to DA.</p>			

ATIS 124.5 379.2	FARGO APP CON 120.4 377.15	FARGO TOWER 133.8 290.4	GND CON 121.9 348.6	CLNC DEL 121.9 348.6
----------------------------	--------------------------------------	-----------------------------------	-------------------------------	--------------------------------



CATEGORY	A	B	C	D	E	HIRL Rwy 18-36 REIL Rwys 9 and 27 MRL Rwys 9-27 and 13-31 FAF to MAP 4.6 NM Knots: 60 90 120 150 180 Min:Sec: 4:36 3:04 2:18 1:50 1:32
S-ILS 18*	1100/24 200 (200-½)					
S-LOC 18	1260/24	360 (400-½)	1260/40	360 (400-¾)		
C CIRCLING	1380-1	479 (500-1)	1520-1¾ 619 (700-1¾)	1620-2¼ 719 (800-2¼)	1620-2½ 719 (800-2½)	

NC-1, 20 MAR 2025 to 17 APR 2025

NC-1, 20 MAR 2025 to 17 APR 2025