

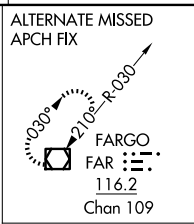
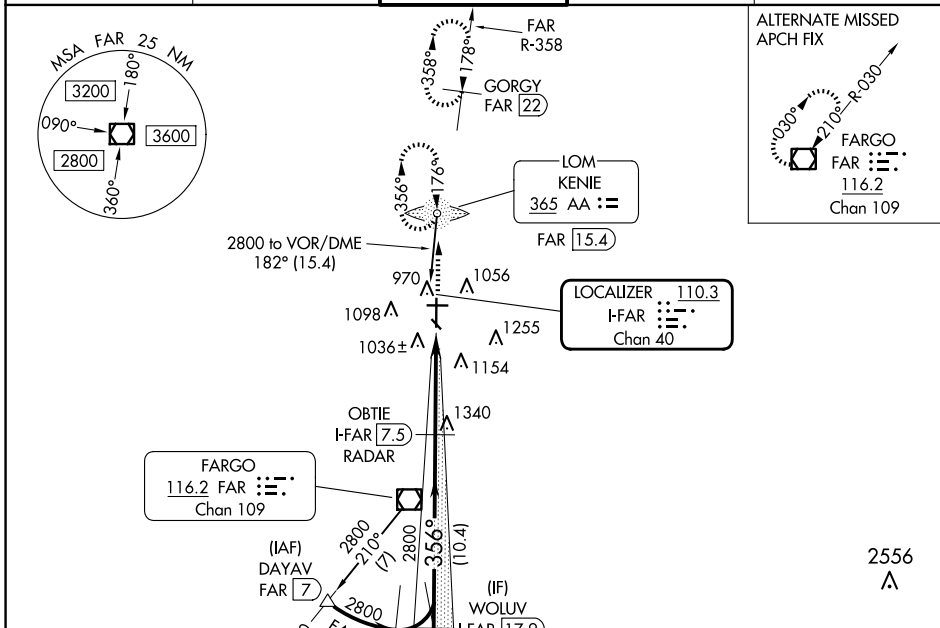
LOC/DME I-FAR 110.3 Chan 40	APP CRS 356°	Rwy Idg TDZE Apt Elev	9001 899 901
---	------------------------	-----------------------------	---

ILS or LOC RWY 36

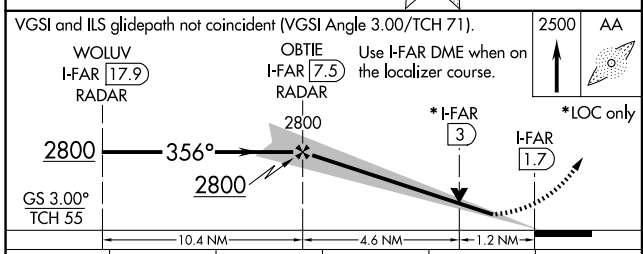
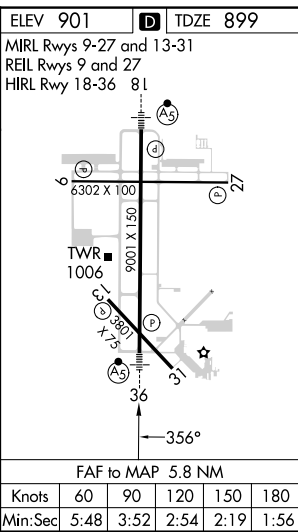
HECTOR INTL (F.A.R.)

ADF or DME required for procedure entry. ADF or DME required.	MALSR 	MISSED APPROACH: Climb to 2500 direct KENIE LOM and hold (DME aircraft climb to 4000 on FAR VOR/DME R-358 to GORGY/22 DME and hold N, RT, 178° inbound, continue climb-in-hold to 4000).
 For inop ALS increase S-ILS 36 Cat E visibility to RVR 4000 and S-LOC 36 Cat C/D/E visibility to 1 3/8 SM. #RVR 1800 authorized with use of FD or AP or HUD to DA.		

ATIS 124.5 379.2	FARGO APP CON 120.4 377.15	FARGO TOWER 133.8 290.4	GND CON 121.9 348.6	CINC DEL 121.9 348.6
----------------------------	--------------------------------------	-----------------------------------	-------------------------------	--------------------------------



VGSIs and ILS glidepath not coincident (VGSIs Angle 3.00/TCH 71).	2500 AA
WOLUV I-FAR [17.9] RADAR	Use I-FAR DME when on the localizer course.
OBTIE I-FAR [7.5] RADAR	
2800	*I-FAR [3] *LOC only
2800	I-FAR [1.7]
GS 3.00° TCH 55	
10.4 NM	4.6 NM
1.2 NM	



CATEGORY	A	B	C	D	E
S-ILS 36#	1099/24 200 (200-1/2)				
S-LOC 36	1360/24	461 (500-1/2)	1360/50 461 (500-1)		
CIRCLING	1380-1	479 (500-1)	1520-1 3/4 619 (700-1 3/4)	1620-2 1/4 719 (800-2 1/4)	1620-2 1/2 719 (800-2 1/2)

NC-1, 20 MAR 2025 to 17 APR 2025

NC-1, 20 MAR 2025 to 17 APR 2025