

VORTAC FLO 115.2 Chan 99	APP CRS 232°	Rwy Idg TDZE Apt Elev	N/A N/A 147
--	------------------------	-----------------------------	--

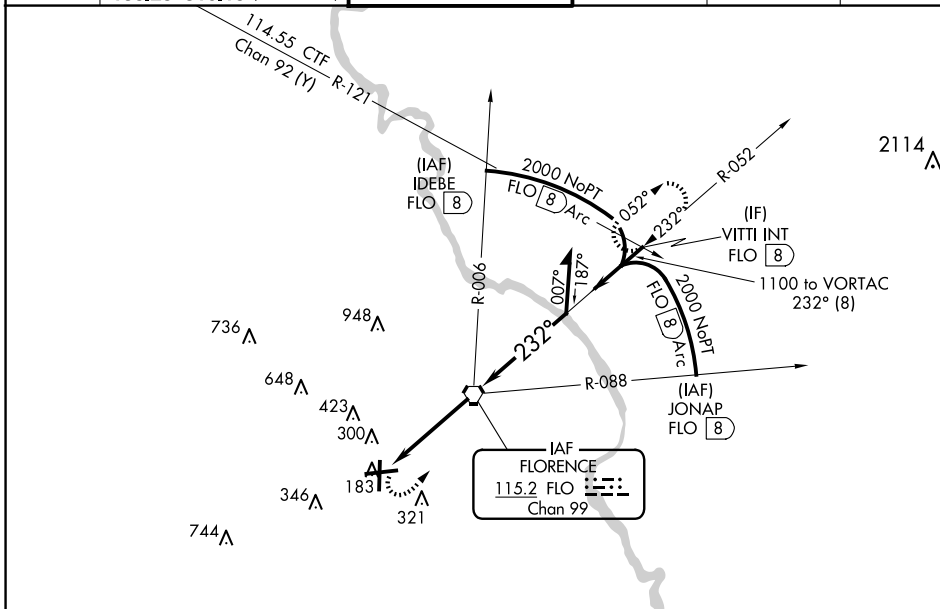
VOR or TACAN-A

FLORENCE RGNL (FLO)

⚠ When local altimeter setting not received, use Darlington altimeter setting: increase all MDA 60 feet and visibility Circling Cat C and D ¼ SM. Helicopter visibility reduction below 1 SM NA. Night Landing: Rwy 1, 19 NA.

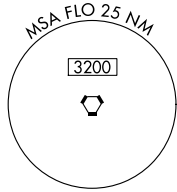
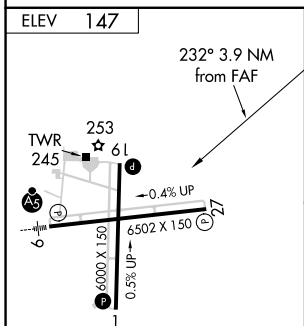
MISSED APPROACH: Climbing left turn to 2000 via heading 030° and FLO VORTAC R-052 to VITTI INT/FLO 8 DME and hold.

ATIS 123.625	FLORENCE APP CON* 118.6 341.7 135.25 316.15 (075°-255°)	FLORENCE TOWER* 125.1 (CTAF) 353.85	GND CON 121.9 353.85	CLNC DEL 121.9 353.85	UNICOM 122.95
------------------------	---	--	--------------------------------	---------------------------------	-------------------------

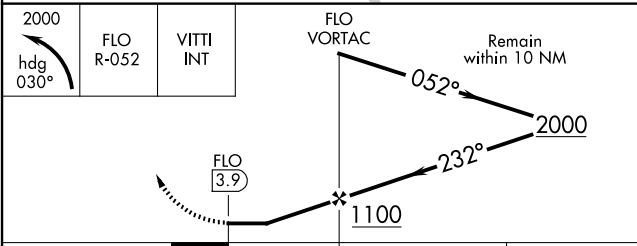


SE-2, 20 MAR 2025 to 17 APR 2025

SE-2, 20 MAR 2025 to 17 APR 2025



REIL Rwys 1, 19 and 27
HIRL Rwy 9-27



FAF to MAP 3.9 NM					
Knots	60	90	120	150	180
Min:Sec	3:54	2:36	1:57	1:34	1:18

CATEGORY	A	B	C	D
CIRCLING	640-1 493 (500-1)	660-1 513 (600-1)	900-2¼ 753 (800-2¼)	900-2½ 753 (800-2½)