

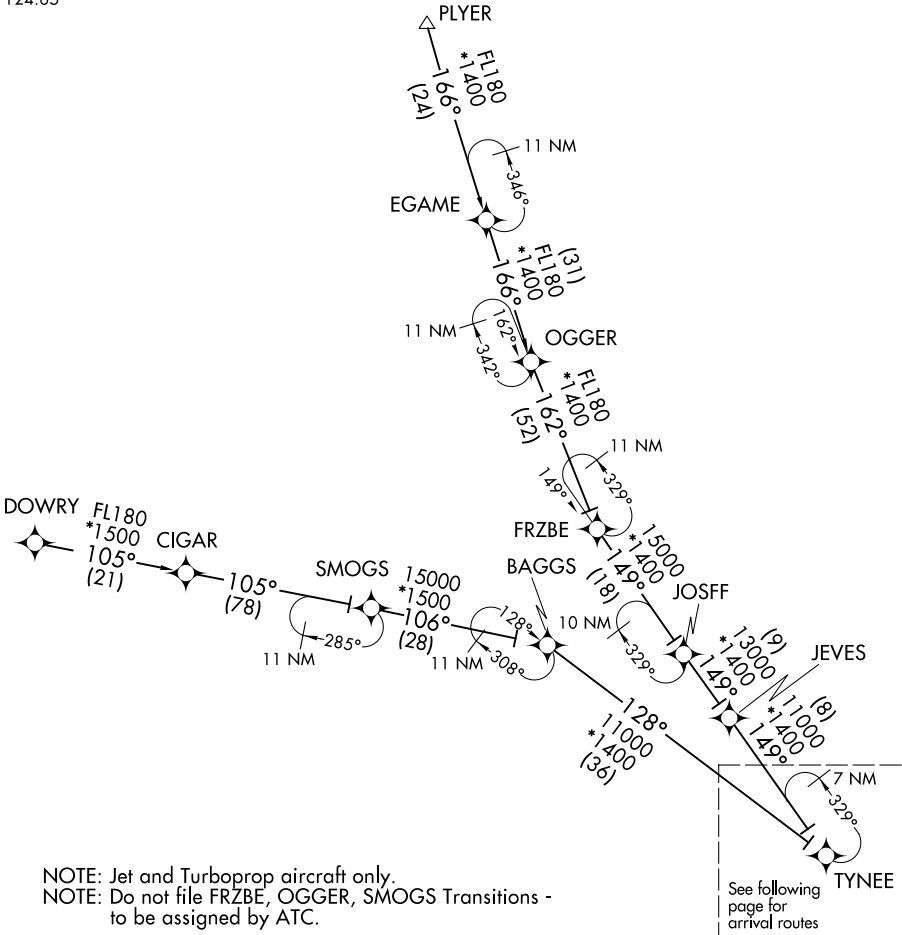
TYNEE THREE ARRIVAL (RNAV) Transition Routes

FORT MYERS, FLORIDA

FORT MYERS APP CON \*  
134.425 306.2  
FMY ATIS  
123.725  
RSW D-ATIS  
124.65

RNAV 1 - DME/DME/IRU or GPS.  
DOWRY Transition - GPS only.

RADAR required.



NOTE: Jet and Turboprop aircraft only.  
NOTE: Do not file FRZBE, OGGER, SMOGS Transitions -  
to be assigned by ATC.

NOTE: Chart not to scale

- DOWRY TRANSITION (DOWRY.TYNEE3)
- FRZBE TRANSITION (FRZBE.TYNEE3)
- OGGER TRANSITION (OGGER.TYNEE3)
- PLYER TRANSITION (PLYER.TYNEE3)
- SMOGS TRANSITION (SMOGS.TYNEE3)

(CONTINUED ON FOLLOWING PAGE)

SE-3, 20 MAR 2025 to 17 APR 2025

SE-3, 20 MAR 2025 to 17 APR 2025

(TYNEE.TYNEE3) 24305

AL-154 (FAA)

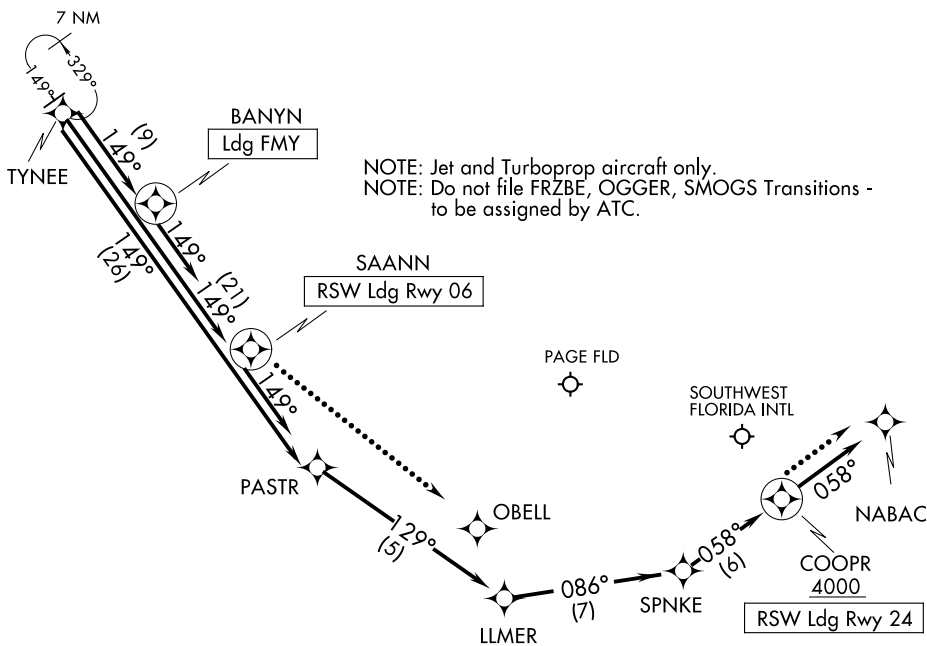
# TYNEE THREE ARRIVAL (RNAV) Arrival Routes

FORT MYERS, FLORIDA

FORT MYERS APP CON ★  
134.425 306.2  
FMY ATIS  
123.725  
RSW D-ATIS  
124.65

RNAV 1 - DME/DME/IRU or GPS.  
DOWRY Transition - GPS only.

RADAR required.



NOTE: Jet and Turboprop aircraft only.  
NOTE: Do not file FRZBE, OGGER, SMOGS Transitions -  
to be assigned by ATC.

SE-3, 20 MAR 2025 to 17 APR 2025

SE-3, 20 MAR 2025 to 17 APR 2025

NOTE: Chart not to scale.

## ARRIVAL ROUTE DESCRIPTION

LANDING RSW RUNWAY 6: From TYNEE on track 149° to SAANN, then on track 149°. Expect RADAR vectors to final approach course.

LANDING RSW RUNWAY 24: From TYNEE on track 149° to PASTR, then on track 129° to LLMER, then on track 086° to SPNKE, then on track 058° to cross COOPR at or above 4000, then on track 058°. Expect RADAR vectors to final approach course.

LANDING FMY: From TYNEE on track 149° to BANYN, then on track 149°. Expect RADAR vectors to final approach course.

### LOST COMMUNICATIONS:

RSW LANDING RUNWAY 6: After SAANN, continue to OBELL, then conduct RWY 6 approach.

RSW LANDING RUNWAY 24: After COOPR, continue to NABAC, then conduct RWY 24 approach.

TYNEE THREE ARRIVAL (RNAV) Arrival Routes

FORT MYERS, FLORIDA

(TYNEE.TYNEE3) 31OCT24