

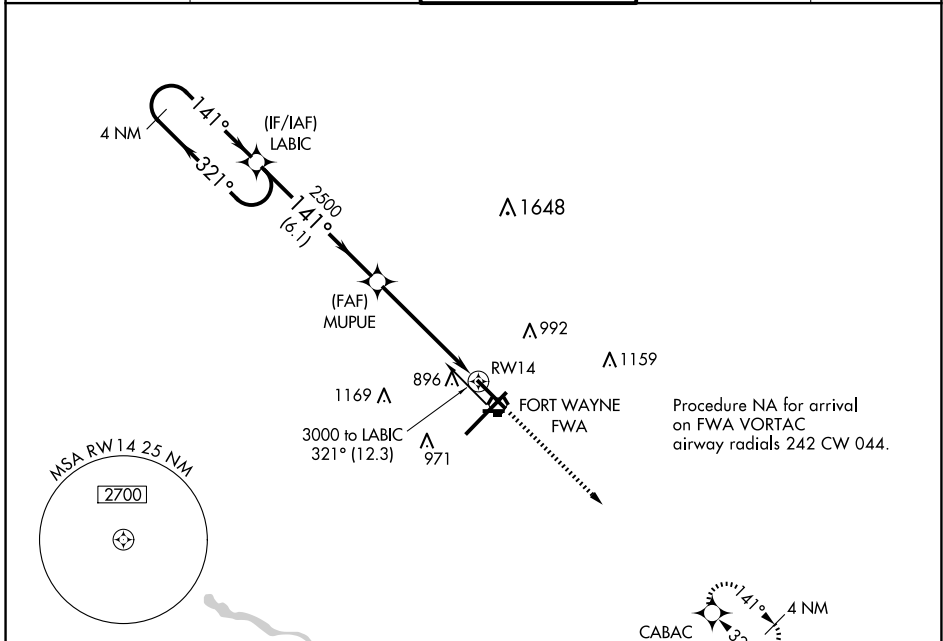
WAAS CH 86417 W14A	APP CRS 141°	Rwy Idg TDZE Apt Elev	8001 802 815
--	------------------------	-----------------------------	---

RNAV (GPS) RWY 14

FORT WAYNE INTL (FWA)

ASR	For uncompensated Baro-VNAV systems, LNAV/VNAV NA below -16°C (4°F) or above 47°C (116°F). DME/DME RNP-0.3 NA.	MISSED APPROACH: Climb to 3000 direct CABAC and hold.
------------	--	---

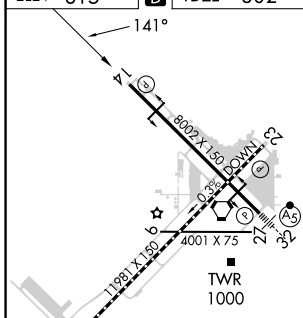
ATIS 121.25 360.825	FORT WAYNE APP CON 127.2 284.6	FORT WAYNE TOWER 119.1 269.325	GND CON 121.9 348.6	CLNC DEL 124.75
-------------------------------	--	--	-------------------------------	---------------------------



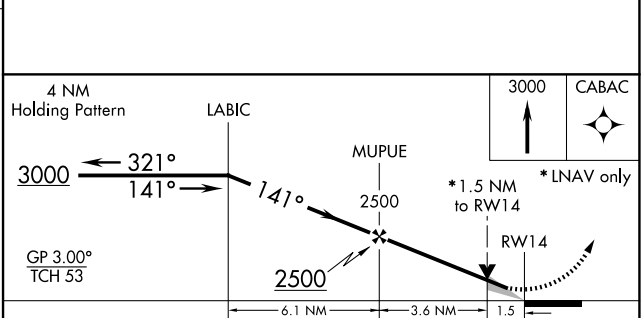
EC-2, 20 MAR 2025 to 17 APR 2025

EC-2, 20 MAR 2025 to 17 APR 2025

ELEV 815	D	TDZE 802
-----------------	----------	-----------------



TDZ/CL Rwy 5
REIL Rws 14 and 23
HIRL Rws 5-23 and 14-32



CATEGORY	A	B	C	D
LPV DA		1002- ³ / ₄	200 (200- ³ / ₄)	
LNAV/VNAV DA		1199-1 ¹ / ₄	397 (400-1 ¹ / ₄)	
LNAV MDA	1320-1	518 (600-1)	1320-1 ³ / ₈	518 (600-1 ³ / ₈)
C CIRCLING	1320-1	505 (600-1)	1420-1 ³ / ₄ 605 (700-1 ³ / ₄)	1520-2 ¹ / ₄ 705 (800-2 ¹ / ₄)