

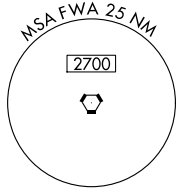
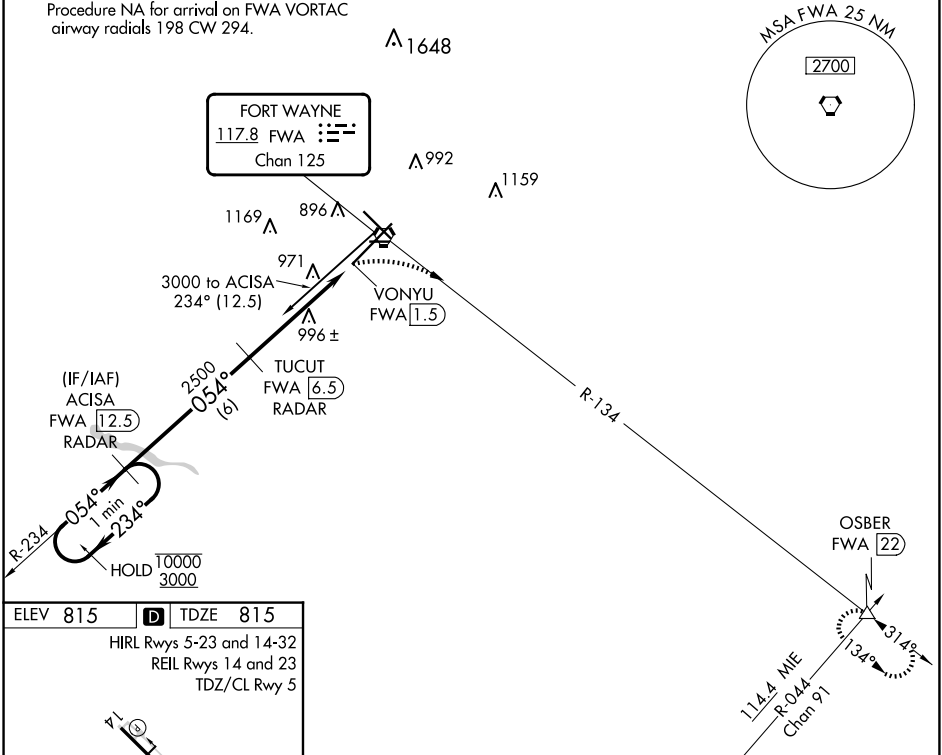
VORTAC FWA 117.8 Chan 125	APP CRS 054°	Rwy Idg TDZE 815 Apt Elev 815
---	------------------------	---

VOR or TACAN RWY 5

FORT WAYNE INTL (FWA)

DME or RADAR required.		ALSF-2	MISSED APPROACH: Climbing right turn to 3000 on FWA VORTAC R-134 to OSBER INT/FWA 22 DME and hold.		
⚠ For inop ALS, increase S-5 Cat C/D/E visibility to 1 3/8 SM. ASR					
ATIS 121.25 360.825	FORT WAYNE APP CON 127.2 284.6	FORT WAYNE TOWER 119.1 269.325	GND CON 121.9 348.6	CLNC DEL 124.75	

Procedure NA for arrival on FWA VORTAC airway radials 198 CW 294.



ELEV 815	D	TDZE 815			
HIRL Rwys 5-23 and 14-32 REIL Rwys 14 and 23 TDZ/CL Rwy 5					
FAF to MAP 5 NM					
Knots	60	90	120	150	180
Min:Sec	5:00	3:20	2:30	2:00	1:40

One Minute Holding Pattern	ACISA FWA 12.5 RADAR	TUCUT FWA 6.5 RADAR	3000	FWA R-134	OSBER
10000 ← 234°	→ 054°	→ 054°	→ 054°	→ 054°	→ 054°
3000		2500	3.07° TCH 55	1.4	
	6 NM	3.6 NM	1.4		
CATEGORY	A	B	C	D	E
S-5	1320/24	505 (600-1/2)	1320/55	505 (600-1)	1320/60 505 (600-1 1/4)
C CIRCLING	1320-1	505 (600-1)	1360-1 1/2 545 (600-1 1/2)	1520-2 1/4 705 (800-2 1/4)	1520-2 1/2 705 (800-2 1/2)

EC-2, 20 MAR 2025 to 17 APR 2025

EC-2, 20 MAR 2025 to 17 APR 2025