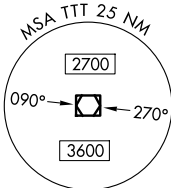


**TOP ALTITUDE:  
ASSIGNED BY ATC**

RADAR and DME required.

LONE STAR DEP CON  
118.1 306.95 (North)  
135.975 379.9 (South)  
ATIS  
120.7  
CLNC DEL  
124.65  
GND CON  
121.9  
MEACHAM TOWER  
118.3 257.8

NOTE: SOLDO Transition: ATC assigned.



MAVERICK  
113.1 TTT  
Chan 78



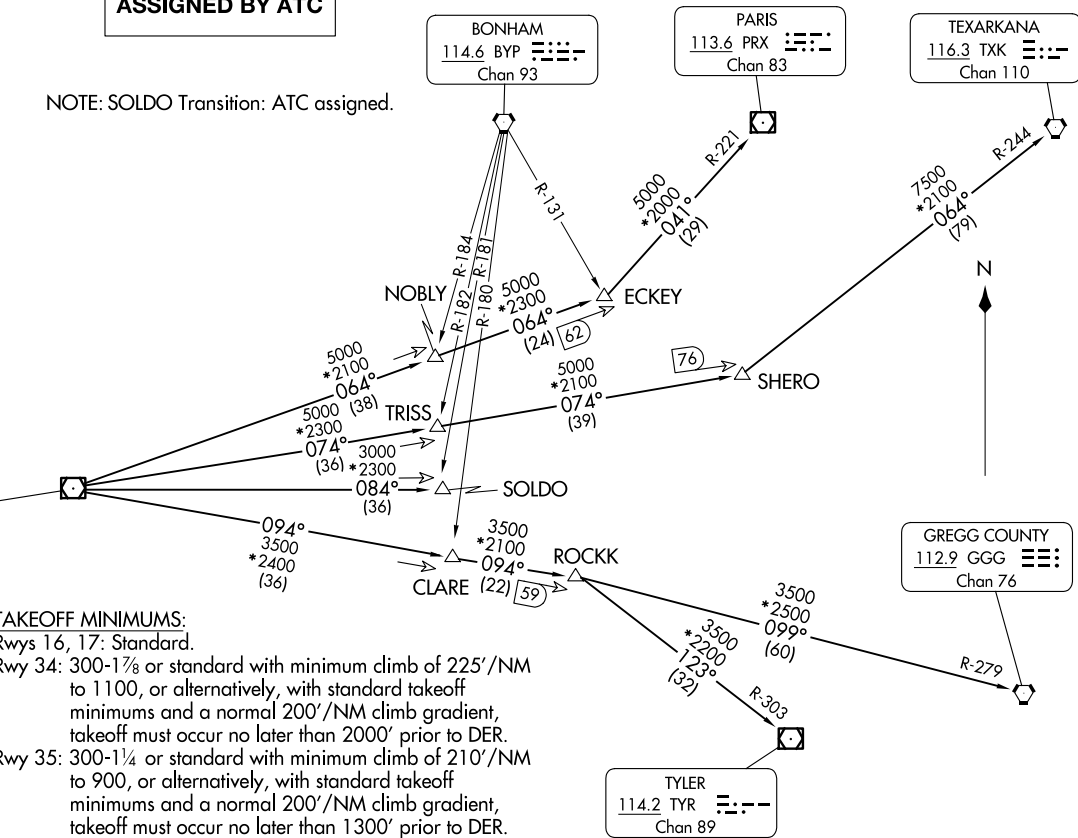
**TAKEOFF MINIMUMS:**

Rwys 16, 17: Standard.

Rwy 34: 300-1 $\frac{1}{8}$  or standard with minimum climb of 225'/NM to 1100, or alternatively, with standard takeoff minimums and a normal 200'/NM climb gradient, takeoff must occur no later than 2000' prior to DER.

Rwy 35: 300-1 $\frac{1}{4}$  or standard with minimum climb of 210'/NM to 900, or alternatively, with standard takeoff minimums and a normal 200'/NM climb gradient, takeoff must occur no later than 1300' prior to DER.

NOTE: Chart not to scale.



GARLAND FIVE DEPARTURE  
(GARLS.TTT) 25JAN24

FORT WORTH MEACHAM INTL (FTW)  
FORT WORTH, TEXAS

(GARLS.TTT) 24305  
GARLAND FIVE DEPARTURE

AL-159 (FAA)

FORT WORTH MEACHAM INTL (FTW)  
FORT WORTH, TEXAS

(CONTINUED ON FOLLOWING PAGE)

# GARLAND FIVE DEPARTURE



## DEPARTURE ROUTE DESCRIPTION

TAKEOFF RUNWAY 16: Climb on heading 166° to 1600 before proceeding on course.

TAKEOFF RUNWAY 17: Climb on heading 164° to 1600 before proceeding on course.

When entering controlled airspace, fly assigned heading for RADAR vectors to appropriate route. Maintain ATC assigned altitude.

GREGG COUNTY TRANSITION (GARL5.GGG): From over TTT VOR/DME on TTT R-094 to ROCKK, then on GGG R-279 to GGG VORTAC.

PARIS TRANSITION (GARL5.PRX): From over TTT VOR/DME on TTT R-064 to ECKEY, then on PRX R-221 to PRX VOR/DME.

SOLDO TRANSITION (GARL5.SOLDO): From over TTT VOR/DME on TTT R-084 to SOLDO.

TEXARKANA TRANSITION (GARL5.TXK): From over TTT VOR/DME on TTT R-074 to SHERO, then on TXK R-244 to TXK VORTAC.

TYLER TRANSITION (GARL5.TYR): From over TTT VOR/DME on TTT R-094 to ROCKK, then on TYR R-303 to TYR VOR/DME.

SC-2, 20 MAR 2025 to 17 APR 2025

SC-2, 20 MAR 2025 to 17 APR 2025