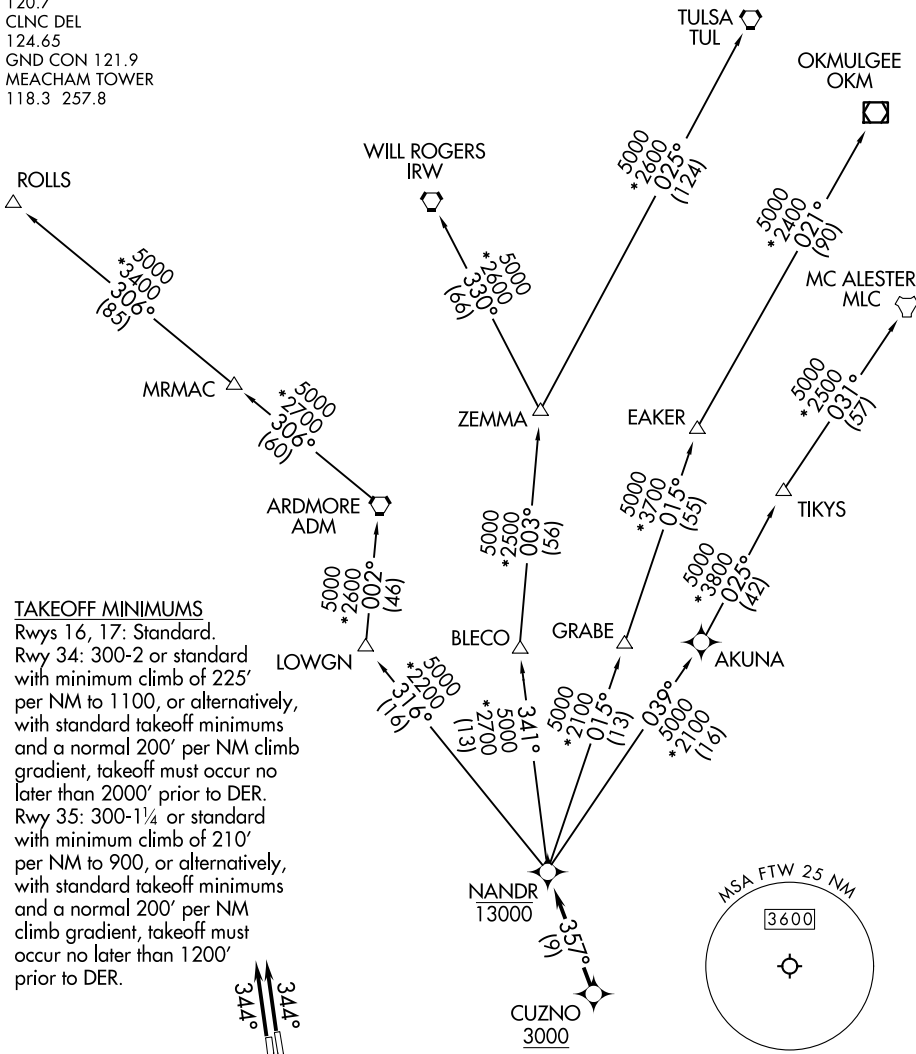


NANDR TWO DEPARTURE (RNAV)

LONE STAR DEP CON
 118.1 306.95 (Rwys 34, 35)
 135.975 379.9 (Rwys 16, 17)
 ATIS
 120.7
 CLNC DEL
 124.65
 GND CON 121.9
 MEACHAM TOWER
 118.3 257.8

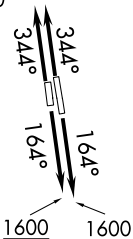
RNAV 1 - DME/DME/IRU or GPS.
RADAR required.

**TOP ALTITUDE:
 ASSIGNED BY ATC**



TAKEOFF MINIMUMS

Rwys 16, 17: Standard.
 Rwy 34: 300-2 or standard with minimum climb of 225' per NM to 1100, or alternatively, with standard takeoff minimums and a normal 200' per NM climb gradient, takeoff must occur no later than 2000' prior to DER.
 Rwy 35: 300-1½ or standard with minimum climb of 210' per NM to 900, or alternatively, with standard takeoff minimums and a normal 200' per NM climb gradient, takeoff must occur no later than 1200' prior to DER.



NOTE: EAKER transition: For TUL terminal arrivals only.
 NOTE: TULSA transition: For all aircraft overflying TUL VORTAC.
 NOTE: Aircraft arriving to the Oklahoma City terminal area, file and expect the ZEMMA enroute transition.

NOTE: Chart not to scale.

(CONTINUED ON FOLLOWING PAGE)

NANDR TWO DEPARTURE (RNAV)

(NANDR2.NANDR) 20APR23

FORT WORTH, TEXAS
 FORT WORTH MEACHAM INTL (F'TW)

SC-2, 20 MAR 2025 to 17 APR 2025

SC-2, 20 MAR 2025 to 17 APR 2025

NANDR TWO DEPARTURE (RNAV)



DEPARTURE ROUTE DESCRIPTION

TAKEOFF RUNWAYS 16, 17: Climb on heading 164° to 1600 before proceeding on course or as assigned by ATC, thence

TAKEOFF RUNWAYS 34, 35: Climb on heading 344° or as assigned by ATC, thence . . .

. . . . expect RADAR vectors to cross CUZNO at or above 3000, then on track 357° to cross NANDR at or below 13000, then on assigned transition.

EAKER TRANSITION (NANDR2.EAKER)

MC ALESTER TRANSITION (NANDR2.MLC)

OKMULGEE TRANSITION (NANDR2.OKM)

ROLLS TRANSITION (NANDR2.ROLLS)

TULSA TRANSITION (NANDR2.TUL)

WILL ROGERS TRANSITION (NANDR2.IRW)

ZEMMA TRANSITION (NANDR2.ZEMMA)

SC-2, 20 MAR 2025 to 17 APR 2025

SC-2, 20 MAR 2025 to 17 APR 2025