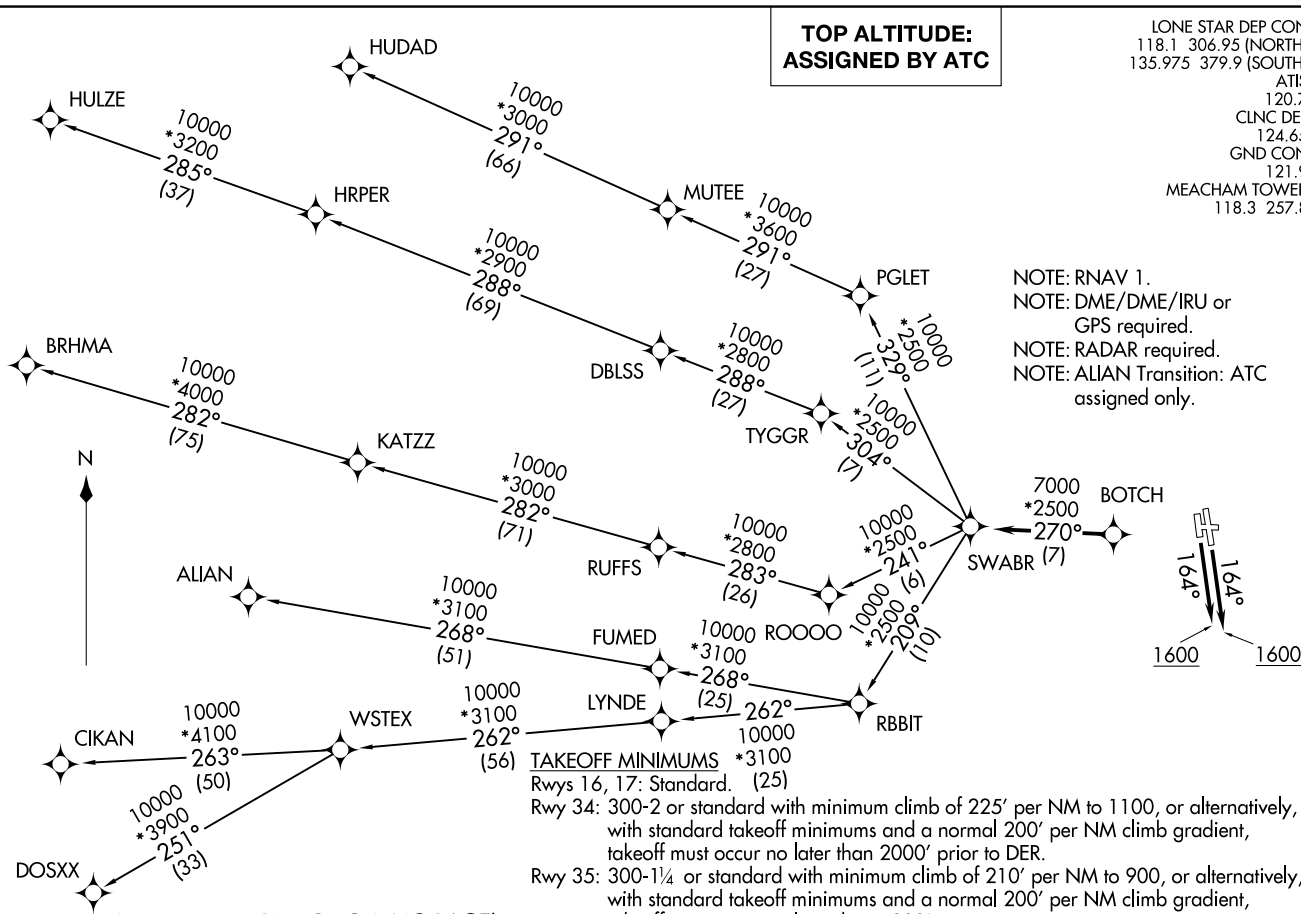


**TOP ALTITUDE:  
ASSIGNED BY ATC**

LONE STAR DEP CON  
118.1 306.95 (NORTH)  
135.975 379.9 (SOUTH)  
ATIS  
120.7  
CLNC DEL  
124.65  
GND CON  
121.9  
MEACHAM TOWER  
118.3 257.8

NOTE: RNAV 1.  
NOTE: DME/DME/IRU or  
GPS required.  
NOTE: RADAR required.  
NOTE: ALIAN Transition: ATC  
assigned only.



(CONTINUED ON FOLLOWING PAGE)

SWABR ONE DEPARTURE (RNAV)  
(SWABR1.SWABR) 24MAR22

FORT WORTH, TEXAS  
FORT WORTH MEACHAM INTL (FTW)

(SWABR1.SWABR) 24305  
SWABR ONE DEPARTURE (RNAV)

AL159 (FAA)  
FORT WORTH MEACHAM INTL (FTW)  
FORT WORTH, TEXAS

# SWABR ONE DEPARTURE (RNAV)



## DEPARTURE ROUTE DESCRIPTION

TAKEOFF RUNWAYS 16, 17: Climb on heading 164° to 1600 before proceeding on course.

When entering controlled airspace, fly heading assigned by ATC, expect vectors to BOTCH, then on track 270° to SWABR, then on assigned transition. Maintain ATC assigned altitude, expect filed altitude 10 minutes after departure.

ALIAN TRANSITION (SWABR1.ALIAN)

BRHMA TRANSITION (SWABR1.BRHMA)

CIKAN TRANSITION (SWABR1.CIKAN)

DOSXX TRANSITION (SWABR1.DOSXX)

HUDAD TRANSITION (SWABR1.HUDAD)

HULZE TRANSITION (SWABR1.HULZE)

WSTEX TRANSITION (SWABR1.WSTEX)

SC-2, 20 MAR 2025 to 17 APR 2025

SC-2, 20 MAR 2025 to 17 APR 2025