

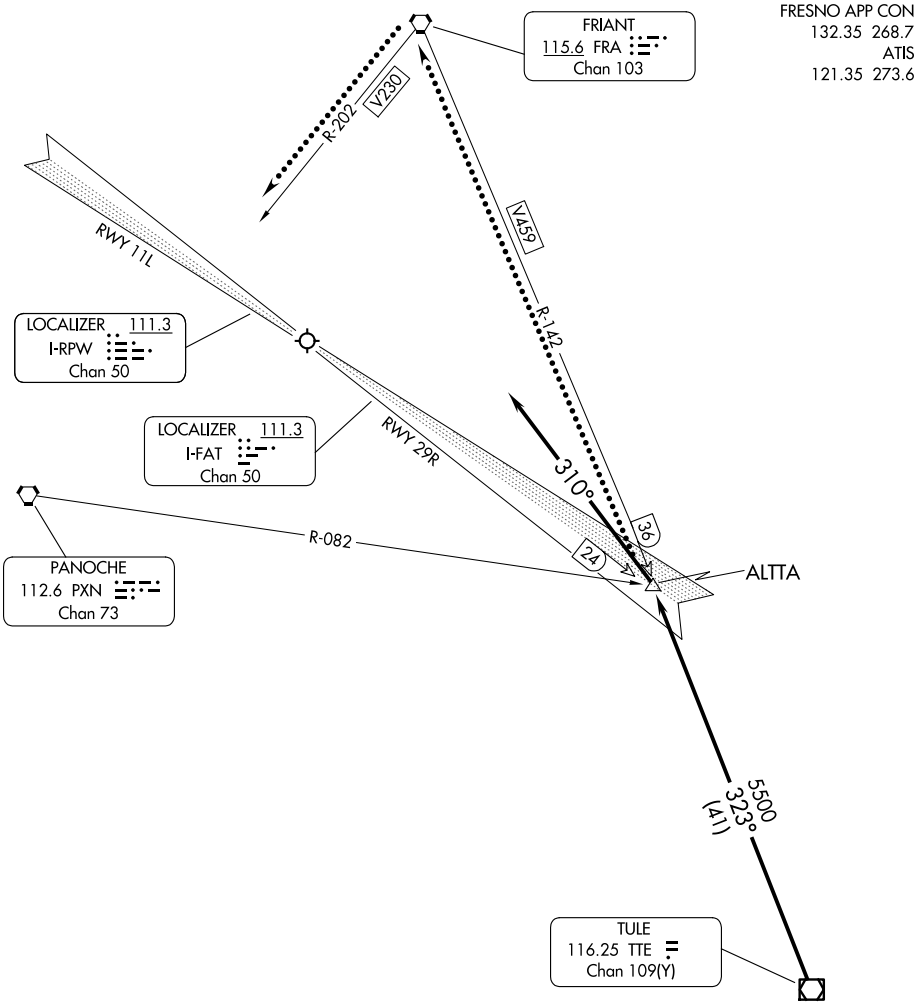
(TTE.ALTA9) 23334

ALTA NINE ARRIVAL

FRESNO YOSEMITE INTL (FAT)
FRESNO, CALIFORNIA

AL-162 (FAA)

FRESNO APP CON
132.35 268.7
ATIS
121.35 273.6



SW-2, 20 MAR 2025 to 17 APR 2025

SW-2, 20 MAR 2025 to 17 APR 2025

ARRIVAL ROUTE DESCRIPTION

From over TULE (TTE) VOR/DME on TTE R-323 and FRIANT (FRA) VORTAC R-142 to ALTA. Expect ILS or LOC RWY 29R approach. For Rwy 11L operations: Depart ALTA heading 310° and expect RADAR vectors to LOC Y RWY 11L.

LOST COMMUNICATIONS: Rwy 11L: Proceed to FRA VORTAC on V459, then on V230, execute the LOC Y RWY 11L approach.

ALTA NINE ARRIVAL
(TTE.ALTA9) 10OCT19

FRESNO, CALIFORNIA
FRESNO YOSEMITE INTL (FAT)