

FRESNO, CALIFORNIA

HI-ILS Z or LOC Z RWY 29R

LOC/DME I-FAT 111.3 Chan 50	APCH CRS 292°	Rwy Idg 29R 9227 TDZE 29R 333 Arprt Elev 336	29L 8008 29L 331
---	-------------------------	---	-----------------------------------

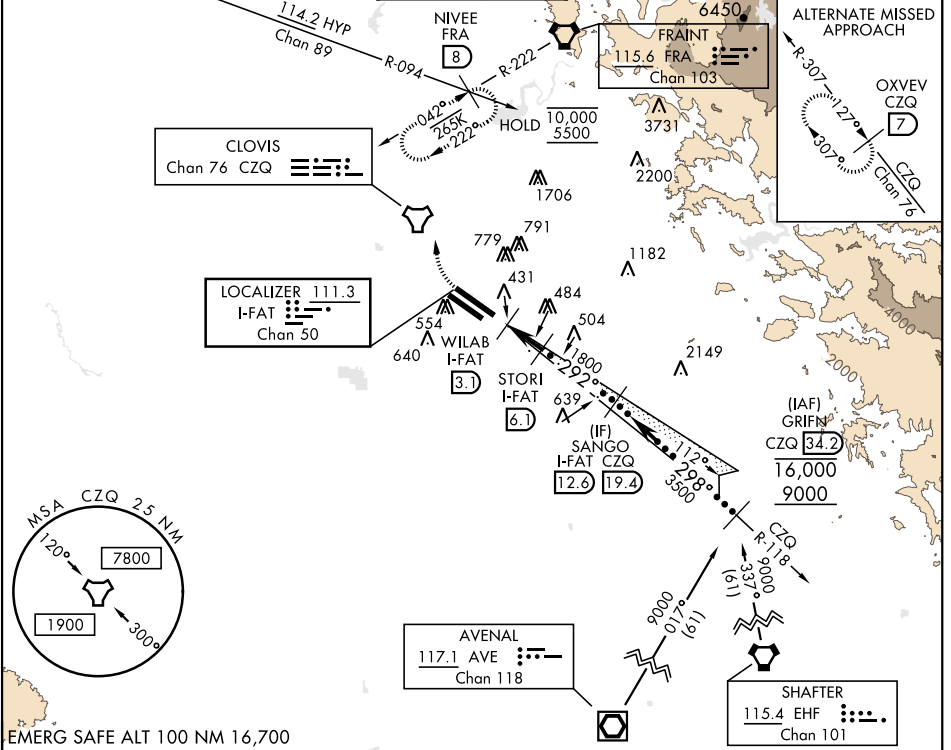
AL-162 [USAF] FRESNO YOSEMITE INTL (KFAT)

DME required.

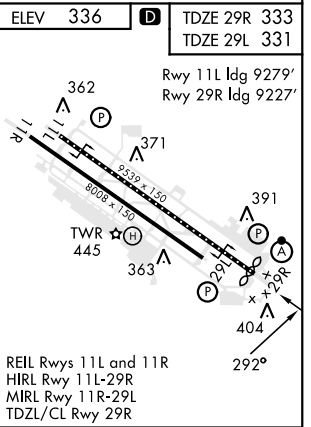
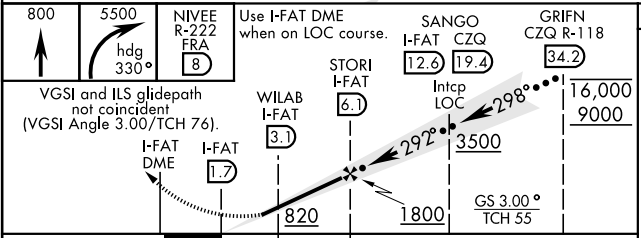
ALSF-2

MISSED APPROACH: Climb to 800, then climbing right turn to 5500 on heading 330° and FRA VORTAC R-222 to NIVEE int (FRA 8 DME) and hold, continue climb-in-hold to 5500.

ATIS 121.35 273.6	APP CON 132.35 323.25	TOWER 118.2 251.1	GND CON 121.7 348.6	CLNC DEL 124.35 348.6
-----------------------------	---------------------------------	-----------------------------	-------------------------------	---------------------------------



EMERG SAFE ALT 100 NM 16,700



CATEGORY	C	D	E
S-ILS 29R*	533/18	200	(200-1/2)
S-LOC 29R**	700/35	367	(400-3/4)
SIDE STEP RWY 29L	700-1 1/2 369 (400-1 1/2)	700-2	369 (400-2)
CIRCLING	920-1 1/2 584 (600-1 1/2)	920-2 584 (600-2)	1140-2 3/4 804 (900-2 3/4)

ELEV 336

TDZE 29R 333
TDZE 29L 331

Rwy 11L Idg 9279'
Rwy 29R Idg 9227'

REIL Rwy 11L and 11R
HIRL Rwy 11L-29R
MIRL Rwy 11R-29L
TDZL/CL Rwy 29R

FRESNO, CALIFORNIA

36°47'N-119°43'W

FRESNO YOSEMITE INTL (KFAT)

Amdt 4A 03NOV22

HI-ILS Z or LOC Z RWY 29R

SW-2, 20 MAR 2025 to 17 APR 2025

SW-2, 20 MAR 2025 to 17 APR 2025