

FRESNO, CALIFORNIA

HI-LOC Z RWY 11L

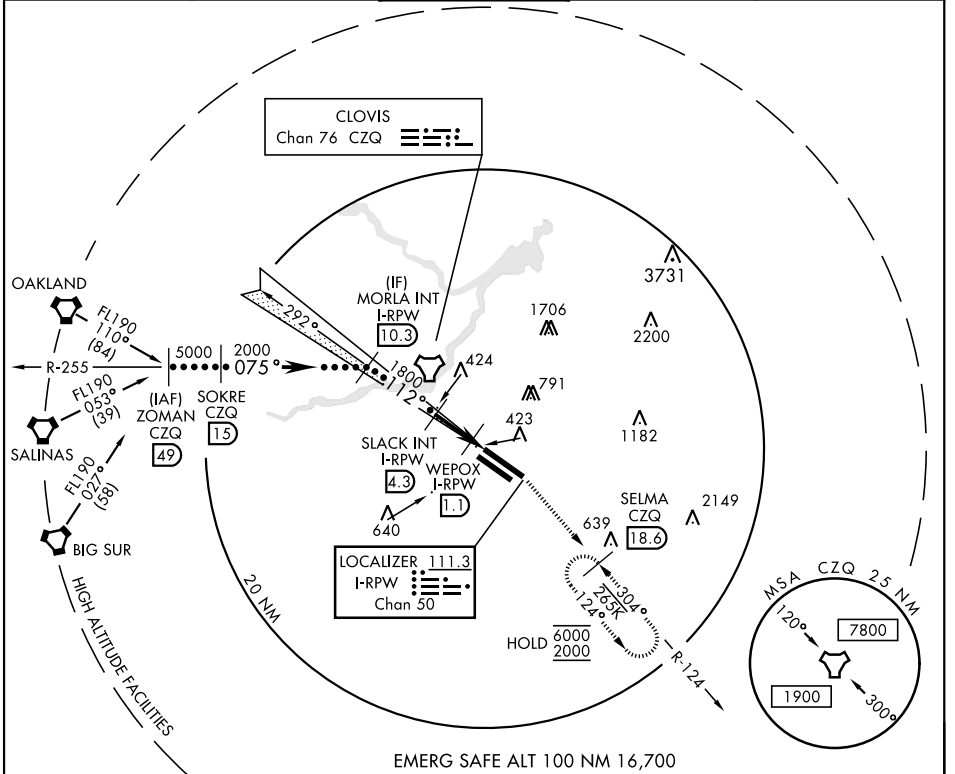
LOC/DME I-RPW 111.3 Chan 50	APCH CRS 112°	Rwy Idg 11L 9279 11R 8008 TDZE 11L 336 11R 333 Arprt Elev 336
---	-------------------------	---

AL-162 [USAF] FRESNO YOSEMITE INTL (KFAT)

DME required.

MISSED APPROACH: Climb to 2000 on heading 112° and CZQ TACAN R-124 to SELMA 18.6 DME and hold.

ATIS 121.35 273.6	APP CON 119.6 351.95	TOWER 118.2 251.1	GND CON 121.7 348.6	CLNC DEL 124.35 348.6
-----------------------------	--------------------------------	-----------------------------	-------------------------------	---------------------------------



ZOMAN CZQ 49 R-255 FL190	SOKRE CZQ 15	MORLA INT I-RPW 10.3	SLACK INT I-RPW 4.3	WEPOX I-RPW 1.1	I-RPW DME 0.2	SELMA CZQ 18.6 R-124	ELEV 336	TDZE 11L 336 TDZE 11R 333
REIL Rwy 11L and 11R	HRL Rwy 11L-29R		MRL Rwy 11R-29L		TDZL/CL Rwy 29R			

FRESNO, CALIFORNIA

36°47'N-119°43'W

FRESNO YOSEMITE INTL (KFAT)

Amtd 3 10OCT19

HI-LOC Z RWY 11L

SW-2, 20 MAR 2025 to 17 APR 2025

SW-2, 20 MAR 2025 to 17 APR 2025