

FRESNO, CALIFORNIA

HI-TACAN RWY 11L

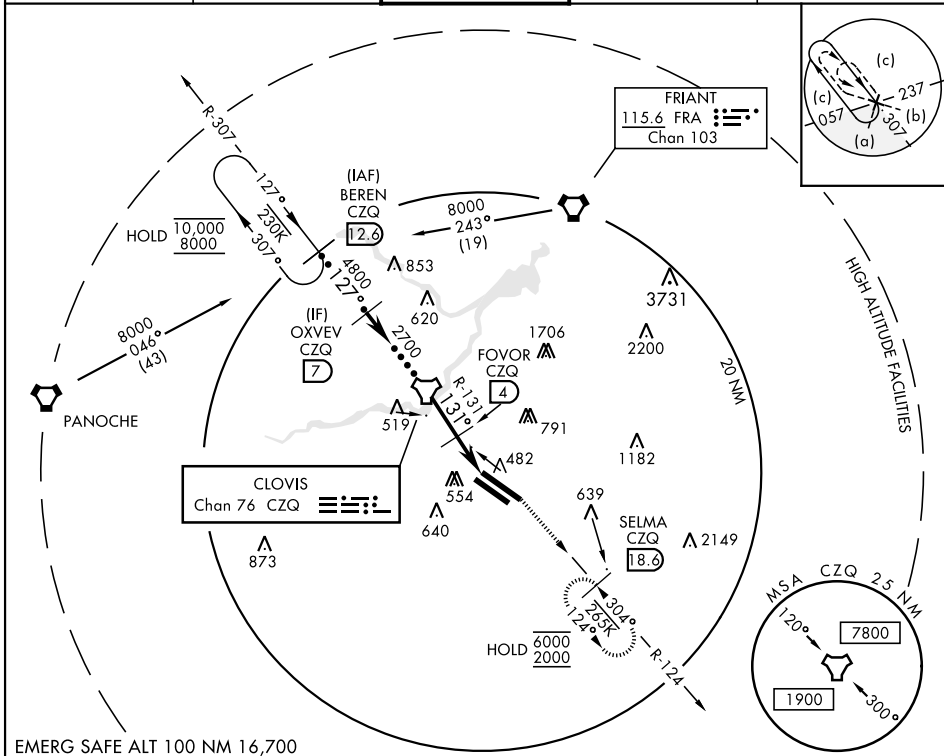
TACAN CZQ Chan 76	APCH CRS 131°	Rwy Idg TDZE Arprt Elev	11L 9279 11L 336 336	11R 8008 11R 333 333
-----------------------------	-------------------------	-------------------------------	---	---

AL-162 [USAF] FRESNO YOSEMITE INTL (KFAT)

DME required.

MISSED APPROACH: Climbing left turn to 2000 on CZQ TACAN R-124 to SELMA / 18.6 DME and hold.

ATIS 121.35 273.6	APP CON 119.6 351.95	TOWER 118.2 251.1	GND CON 121.7 348.6	CLNC DEL 124.35 348.6
-----------------------------	--------------------------------	-----------------------------	-------------------------------	---------------------------------



SW-2, 20 MAR 2025 to 17 APR 2025

SW-2, 20 MAR 2025 to 17 APR 2025

BEREN CZQ R-307 12.6	OXVEV 7	TACAN	FOVOR 4	2000 CZQ R-124	SELMA CZQ 18.6	ELEV 336	D TDZE 11L 336 TDZE 11R 333
VGSi and descent angles not coincident (VGSi Angle 3.00/TCH 50)				131° 7.3 NM from FAF		Rwy 11L Idg 9279' Rwy 29L Idg 9227'	
10,000 8000				362 371 391 404			
3.00° TCH 55				TWR 445 363			
4 NM				REIL Rwy 11L and 11R HIRL Rwy 11L-29L MIRL Rwy 11R-29L TDZL/CL Rwy 29R			
CATEGORY	C	D	E				
S-11L	800-1½	464	(500-1½)				
SIDESTEP 11R	800-1½ 467 (500-1½)	800-2	467 (500-2)				
CIRCLING	920-1½ 584 (600-1½)	920-2 584 (600-2)	1140-2¾ 804 (900-2¾)				

FRESNO, CALIFORNIA

36° 47' N - 119° 43' W

FRESNO YOSEMITE INTL (KFAT)

Amdt 2A 10OCT19

HI-TACAN RWY 11L