

LOC/DME I-SXH 108.95 Chan 26(Y)	APP CRS 093°	Rwy Idg TDZE 669 Apt Elev 680
--	------------------------	---

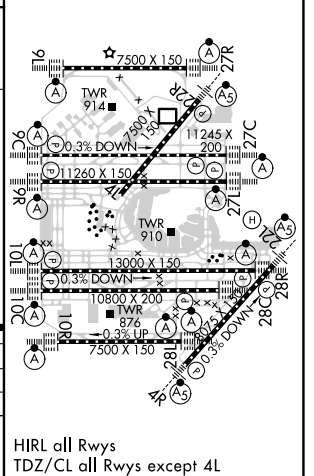
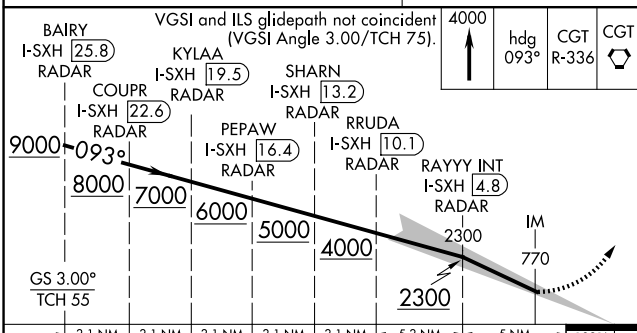
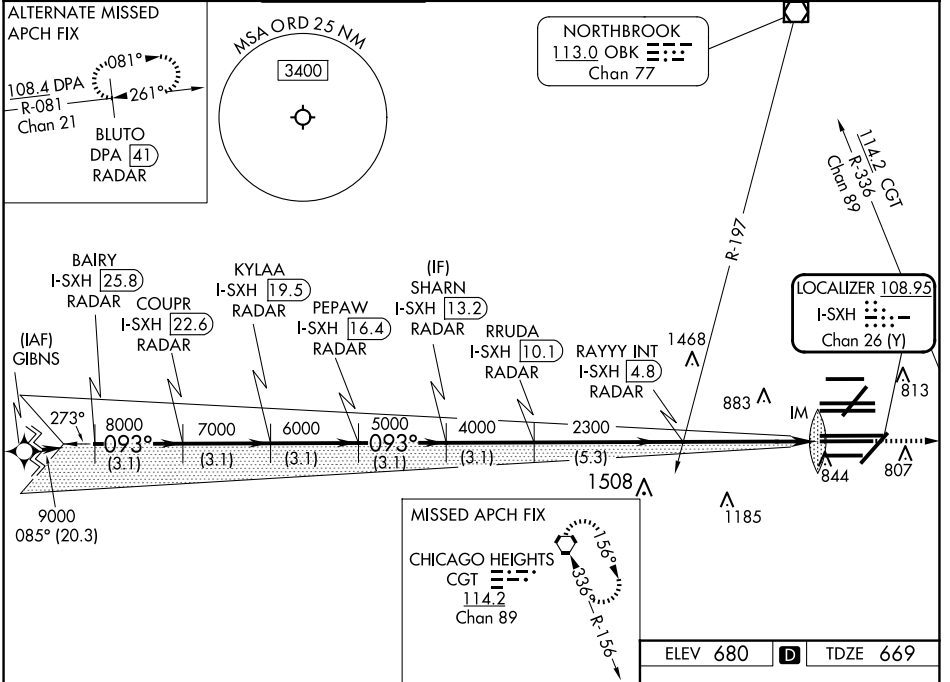
ILS RWY 10C (CAT II & III)

CHICAGO O'HARE INTL (ORD)

From GIBNS: RNAV-1 GPS required.
 RNAV 1-GPS or RADAR required for procedure entry. DME or RADAR required.
 Simultaneous approach authorized. CAT II: RVR 1000 authorized with specific OPSPEC, MSPEC, or LOA approval and use of autoland or HUD to touchdown.

ALSF-2
 MISSED APPROACH: Climb to 4000 on heading 093° and CGT VORTAC R-336 to CGT VORTAC and hold.

D-ATIS 135.4 282.225	CHICAGO APP CON 119.0 292.125	O'HARE TOWER 120.75 348.0	GND CON (TWR CENTER) 124.125 (TWR NORTH) 118.05 (TWR SOUTH) 226.675 (ALL TWRs)	(TWR CENTER) (OBND) 121.75 (IBND) 121.9 (IBND)	CLNC DEL 121.6	CPDLC
--	---	-------------------------------------	--	--	--------------------------	-------



GS 3.00° TCH 55	3.1 NM	3.1 NM	3.1 NM	3.1 NM	3.1 NM	5.3 NM	5 NM	1091'
CATEGORY	A		B		C		D	
S-ILS 10C	CAT II RA 102/12 100 DA 769							
S-ILS 10C	CAT III RVR 06							

CHICAGO, ILLINOIS Amdt 2A 03JAN19 41°59'N-87°54'W CHICAGO O'HARE INTL (ORD) ILS RWY 10C (CAT II & III)

EC-3, 20 MAR 2025 to 17 APR 2025

EC-3, 20 MAR 2025 to 17 APR 2025

HIRL all Rwys
 TDZ/CL all Rwys except 4L