

LOC/DME I-IAC 110.5 Chan 42	APP CRS 273°	Rwy ldg 11260 TDZE 654 Apt Elev 680
---	------------------------	--

ILS RWY 27L (CAT II & III)

CHICAGO O'HARE INTL (ORD)

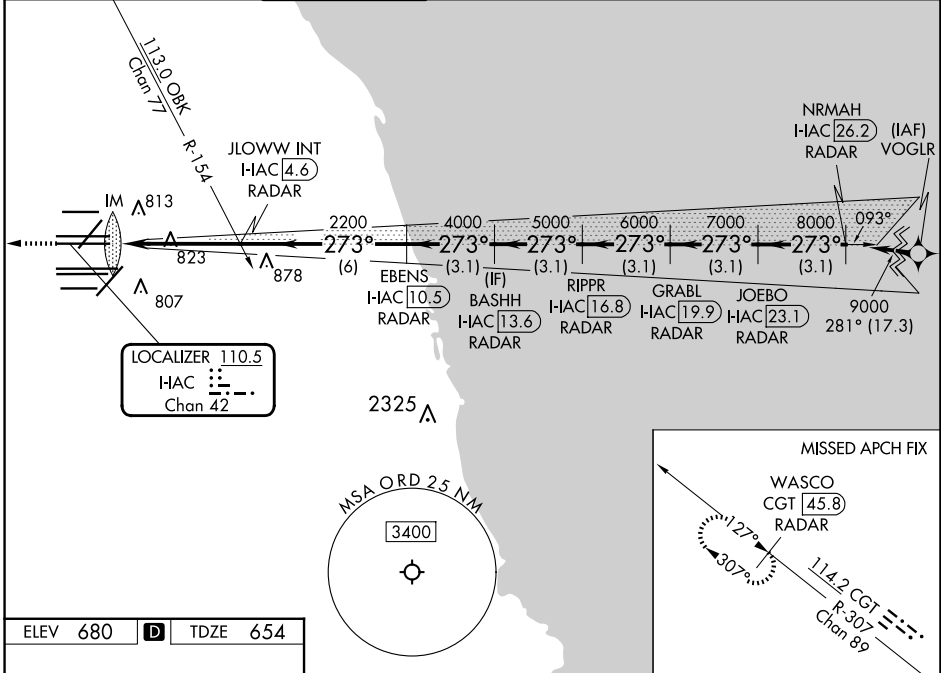
RNP APCH-GPS from VOGLR.

Aircraft not GPS equipped - RADAR required for procedure entry. DME or RADAR required.

ALSF-2
 MISSED APPROACH: Climb to 1200 then climb to 4000 on heading 265° and on CGT VORTAC R-307 to WASCO/CGT 45.8 DME/RADAR and hold.

Simultaneous approach authorized.

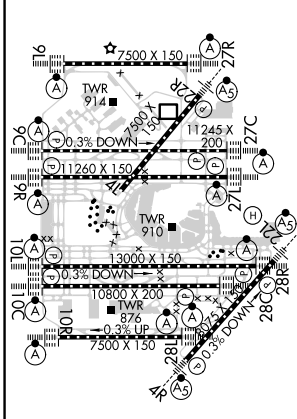
D-ATIS 135.4 282.225	CHICAGO APP CON 119.0 292.125	O'HARE TOWER 126.9 348.0	GND CON (TWR CENTER) 124.125 (TWR NORTH) 118.05 (TWR SOUTH) 226.675 (ALL TWRS)	(TWR CENTER) 121.75 (OBND) 121.9 (IBND)	CLNC DEL 121.6	CPDLC
--	---	------------------------------------	--	---	--------------------------	-------



EC-3, 20 MAR 2025 to 17 APR 2025

EC-3, 20 MAR 2025 to 17 APR 2025

ELEV 680	D	TDZE 654
-----------------	----------	-----------------



1200	4000	CGT R-307	WASCO CGT 45.8 RADAR	VGSI and ILS glidepath not coincident (VGSI Angle 3.00/TCH 77).
hdg 265°				
		JLOWW INT I-IAC 4.6 RADAR	EBENS I-IAC 10.5 RADAR	BASHH I-IAC 13.6 RADAR
		RIPPR I-IAC 16.8 RADAR	GRABL I-IAC 19.9 RADAR	JOEBO I-IAC 23.1 RADAR
				NRMAH I-IAC 26.2 RADAR
		IM 751	2200	4000
			5000	6000
			7000	8000
				9000
				GS 3.00° TCH 57
		1066'	0.1	4.7 NM
				6 NM
				3.1 NM
				3.1 NM
				3.1 NM
				3.1 NM
				3.1 NM
CATEGORY	A	B	C	D
S-ILS 27L	CAT II RA 110/12 100 DA 754			
S-ILS 27L	CAT III RVR 06			

CATEGORY II & III ILS - SPECIAL AIRCREW & AIRCRAFT CERTIFICATION REQUIRED