

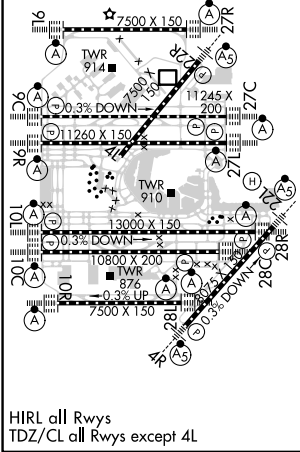
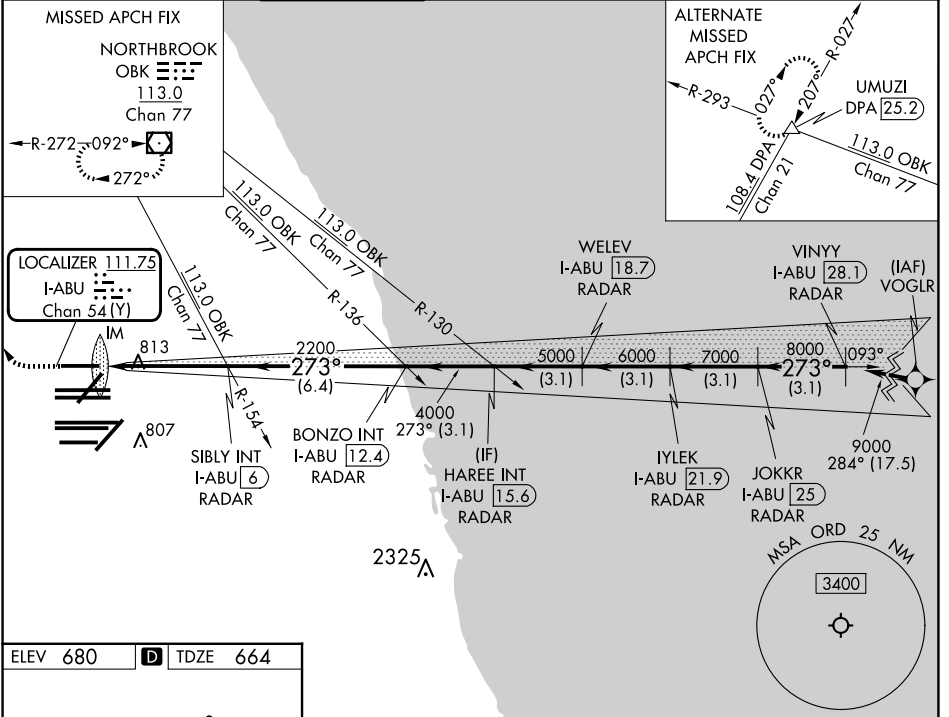
LOC/DME I-ABU 111.75 Chan 54 (Y)	APP CRS 273°	Rwy ldg 7500 TDZE 664 Apt Elev 680
---	------------------------	---

ILS RWY 27R (SA CAT I)

CHICAGO O'HARE INTL (ORD)

RNAV-1 GPS or RADAR required for procedure entry. RADAR or DME required.	ALSF-2 	MISSED APPROACH: Climb to 1100 then climbing right turn to 4000 direct OBK VOR/DME and hold, continue climb-in-hold to 4000.
Simultaneous approach authorized. Requires specific OPSPEC, MSPEC, or LOA approval and use of HUD to DH.		

D-ATIS 135.4 282.225	CHICAGO APP CON 119.0 292.125	O'HARE TOWER 128.15 348.0	124.125 (TWR NORTH) 118.05 (TWR SOUTH) 226.675 (ALL TWRs)	GND CON (TWR CENTER) 121.75 (OBND) 121.9 (IBND)	CLNC DEL 121.6	CPDLC
--	---	-------------------------------------	--	---	--------------------------	-------



1100	4000	OBK
SIBLY INT I-ABU 6 RADAR	HAREE INT I-ABU 15.6 RADAR	IYLEK I-ABU 21.9 RADAR
BONZO INT I-ABU 12.4 RADAR	WELEV I-ABU 18.7 RADAR	VINYY I-ABU 28.1 RADAR
JOKKR I-ABU 25 RADAR		
IM 2200	4000 5000 6000 7000 8000 9000	GS 3.00° TCH 55
1135°	4.7 NM - 6.4 NM - 3.1 NM - 3.1 NM - 3.1 NM - 3.1 NM - 3.1 NM	
CATEGORY	A	B
S-ILS-27R	RA 171/14 150 DA 814	
SA CATEGORY I ILS - SPECIAL AIRCREW & AIRCRAFT CERTIFICATION REQUIRED		

EC-3, 20 MAR 2025 to 17 APR 2025

EC-3, 20 MAR 2025 to 17 APR 2025