

LOC/DME I-TSL 111.1 Chan 48	APP CRS 273°	Rwy ldg 13000	TDZE 651
		Apt Elev 680	

ILS RWY 28R (CAT II & III)

CHICAGO O'HARE INTL (ORD)

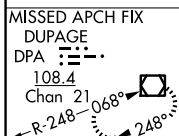
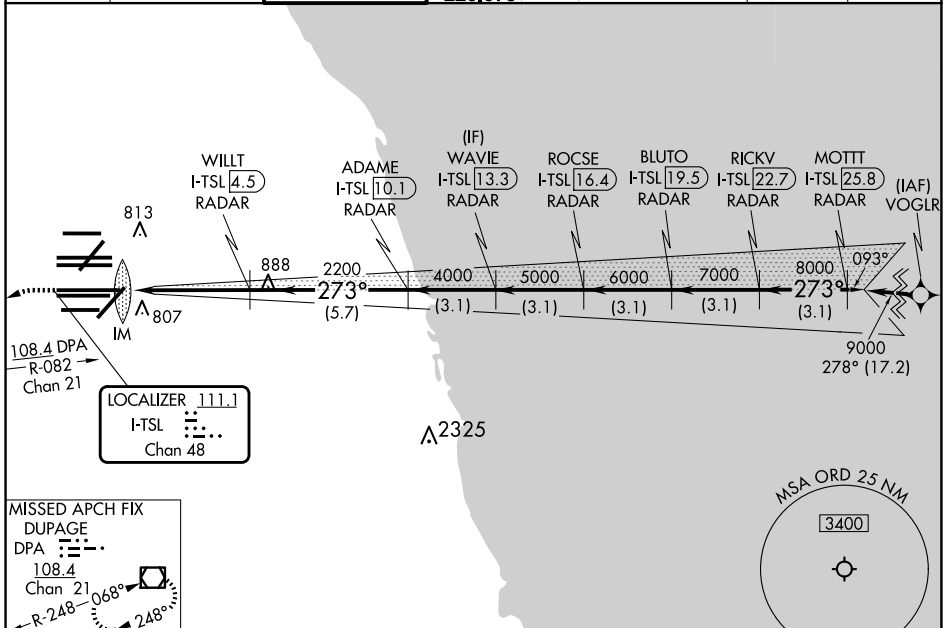
From VOGIR: RNAV 1-GPS required.
Aircraft not GPS equipped - RADAR required for procedure entry.
DME or RADAR required.



MISSED APPROACH: Climb to 1100 then climbing left turn to 4000 on heading 215° and DPA VOR/DME R-082 to DPA VOR/DME and hold.

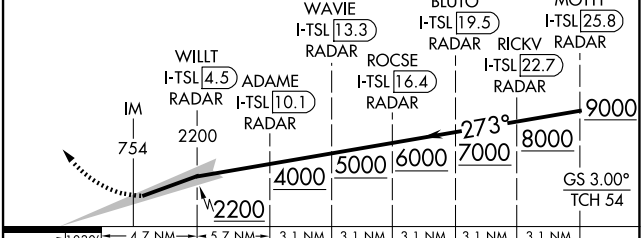
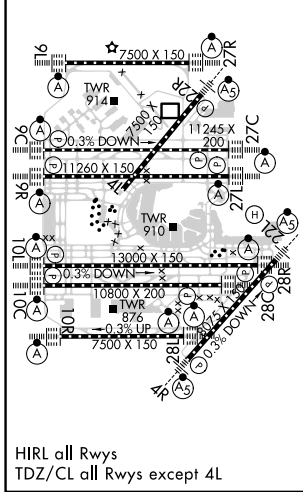
Simultaneous approach authorized.

D-ATIS 135.4 282.225	CHICAGO APP CON 119.0 292.125	O'HARE TOWER 132.7 348.0	GND CON (TWR CENTER) 124.125 (TWR NORTH) 121.75 (TWR SOUTH) 118.05 121.9 (IBND)	CLNC DEL 121.6	CPDLC
-----------------------------------	---	------------------------------------	---	--------------------------	-------



ELEV 680	D	TDZE 651
----------	----------	----------

1100	4000	DPA	VGSI and ILS glidepath not coincident (VGSI Angle 3.00/TCH 70).
↑	hdg 215°	R-082	



1030	4.7 NM	5.7 NM	3.1 NM	3.1 NM	3.1 NM	3.1 NM	3.1 NM
CATEGORY	A	B	C	D			
S-ILS 28R	CAT II RA 97/12 100 DA 751						
S-ILS 28R	CAT III RVR 06						

CATEGORY II & III ILS - SPECIAL AIRCREW & AIRCRAFT CERTIFICATION REQUIRED