

LOC/DME I-TSL 111.1 Chan 48	APP CRS 273°	Rwy ldg 13000
		TDZE 651
		Apt Elev 680

ILS RWY 28R (SA CAT I)

CHICAGO O'HARE INTL (ORD)

From VOGLR: RNAV 1-GPS required.
Aircraft not GPS equipped - RADAR required for procedure entry.
DME or RADAR required.

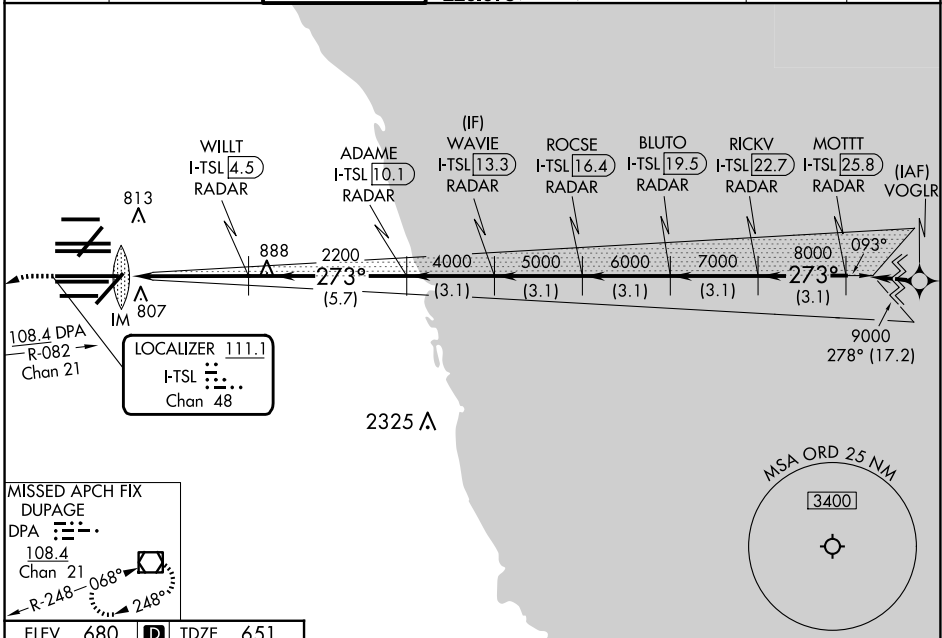
ALSIF-2



MISSED APPROACH: Climb to 1100 then climbing left turn to 4000 on heading 215° and DPA VOR/DME R-082 to DPA VOR/DME and hold.

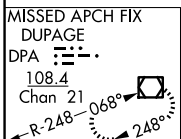
Simultaneous approach authorized. Requires specific OPSPEC, MSPEC, or LOA approval and use of HUD to DH.

D-ATIS 135.4 282.225	CHICAGO APP CON 119.0 292.125	O'HARE TOWER 132.7 348.0	GND CON (TWR NORTH) 124.125 (TWR SOUTH) 118.05 (ALL TWRs) 226.675	(TWR CENTER) (OBND) 121.75 (IBND) 121.9	CLNC DEL 121.6	CPDLC
--	---	------------------------------------	---	--	--------------------------	-------



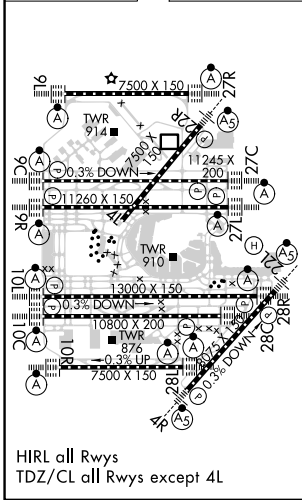
EC-3, 20 MAR 2025 to 17 APR 2025

EC-3, 20 MAR 2025 to 17 APR 2025



ELEV 680	D	TDZE 651
----------	----------	----------

1100	4000	DPA R-082	VGSI and ILS glidepath not coincident (VGSI Angle 3.00/TCH 70).				
↑	hdg 215°						
WAVIE I-TSL 13.3 RADAR	BLUTO I-TSL 19.5 RADAR	MOTTT I-TSL 25.8 RADAR					
WILL I-TSL 4.5 RADAR	ADAME I-TSL 10.1 RADAR	RICKV I-TSL 22.7 RADAR					
ROCSE I-TSL 16.4 RADAR							
2200	4000	5000	6000	7000	8000	9000	
IM	2200	4000	5000	6000	7000	8000	9000
1030'	4.7 NM	5.7 NM	3.1 NM	3.1 NM	3.1 NM	3.1 NM	3.1 NM
CATEGORY A	B	C	D				
S-ILS 28R	RA 161/14 150 DA 801						



SA CATEGORY I ILS - SPECIAL AIRCREW & AIRCRAFT CERTIFICATION REQUIRED