

LOC/DME I-AIC <b>110.5</b> Chan <b>42</b>	APP CRS <b>273°</b>	Rwy ldg <b>11260</b> TDZE <b>654</b> Apt Elev <b>680</b>
---	------------------------	--

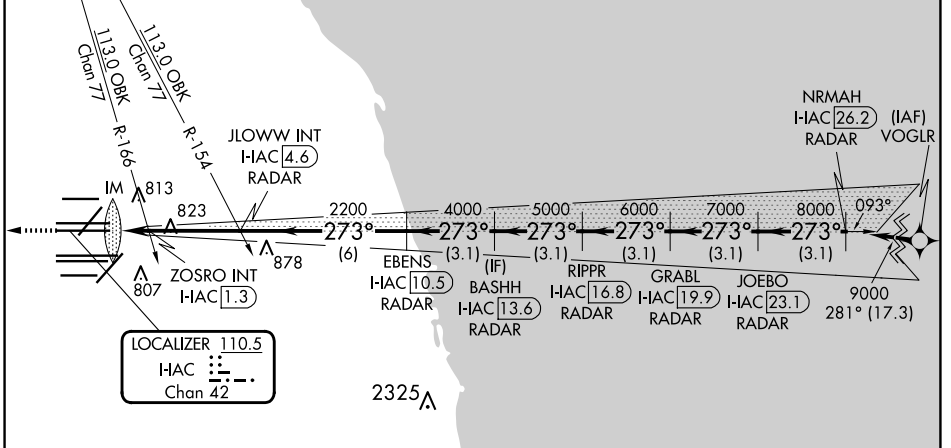
# ILS or LOC RWY 27L

CHICAGO O'HARE INTL (ORD)

RNP APCH-GPS from VOGLR.  
 Aircraft not GPS equipped - RADAR required for procedure entry. DME or RADAR required.  
 Simultaneous approach authorized. For inop ALS, increase S-LOC 27L Cat C/D visibility to 1 1/8 SM.

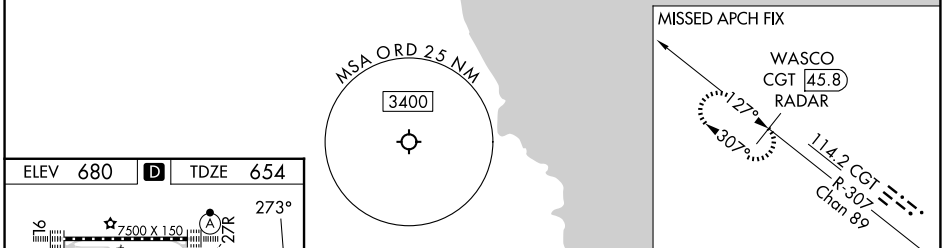
ALSF-2  
 MISSED APPROACH: Climb to 1200 then climb to 4000 on heading 265° and on CGT VORTAC R-307 to WASCO/CGT 45.8 DME/RADAR and hold.

D-ATIS <b>135.4</b> <b>282.225</b>	CHICAGO APP CON <b>119.0 292.125</b>	O'HARE TOWER <b>126.9 348.0</b>	GND CON <b>124.125</b> (TWR NORTH) <b>118.05</b> (TWR SOUTH) <b>226.675</b> (ALL TWRs)	(TWR CENTER) <b>121.75</b> (OBND) <b>121.9</b> (IBND)	CLNC DEL <b>121.6</b>	CPDLC
--	---	------------------------------------	---	---	--------------------------	-------

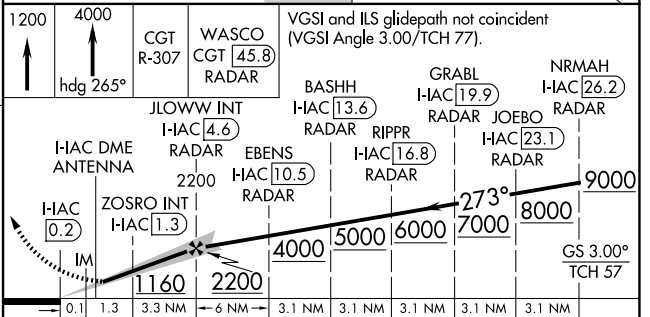
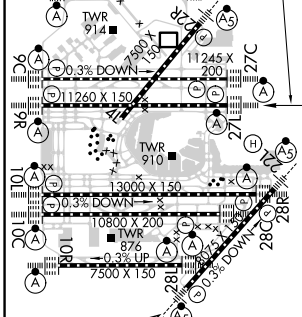


EC-3, 20 MAR 2025 to 17 APR 2025

EC-3, 20 MAR 2025 to 17 APR 2025



ELEV 680	<b>D</b>	TDZE 654
----------	----------	----------



HIRL all Rwws TDZ/CL all Rwws except 4L					
FAF to MAP 4.7 NM					
Knots	60	90	120	150	180
Min:Sec	4:42	3:08	2:21	1:53	1:34

CGT R-307	WASCO CGT [45.8] RADAR	VGSi and ILS glidepath not coincident (VGSi Angle 3.00/TCH 77).				
JLOWW INT I-AIC [4.6] RADAR		BASHH I-AIC [13.6] RADAR		GRABL I-AIC [19.9] RADAR		
ZOSRO INT I-AIC [1.3] RADAR		RIPPR I-AIC [16.8] RADAR		JOEBO I-AIC [23.1] RADAR		
EBENS I-AIC [10.5] RADAR		NRMAH I-AIC [26.2] RADAR				
I-AIC [0.2]		2200		9000		
2200		4000		8000		
3.1 NM		3.1 NM		3.1 NM		
3.1 NM		3.1 NM		3.1 NM		
GS 3.00° TCH 57						
CATEGORY	A		B		C	
S-ILS 27L	854/18 200 (200-1/2)					
S-LOC 27L	1160/24 506 (500-1/2)		1160/55 506 (500-1)			
ZOSRO FIX MINIMUMS (DUAL VOR RECEIVERS OR DME REQUIRED)						
S-LOC 27L	1080/24 426 (400-1/2)		1080/40 426 (400-3/4)			