

LOC/DME I-VZE <b>108.95</b> Chan 26 (Y)	APP CRS <b>273°</b>	Rwy ldg <b>10800</b>
		TDZE <b>651</b>
		Apt Elev <b>680</b>

# ILS or LOC RWY 28C

CHICAGO O'HARE INTL (ORD)

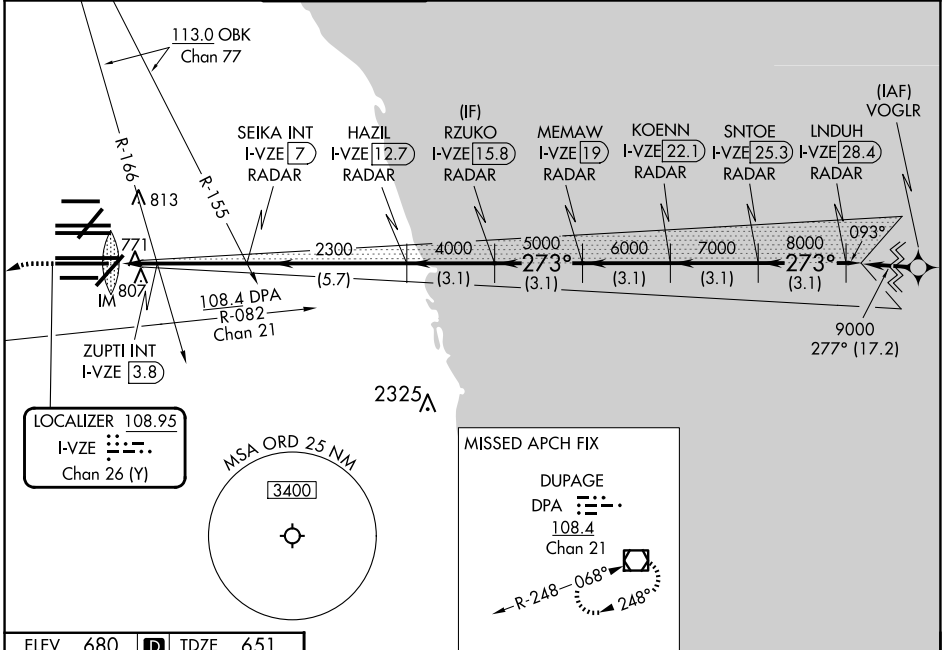
From VOGLR: RNAV 1-GPS required.  
Aircraft not GPS equipped - RADAR required for procedure entry.  
DME or RADAR required.

ALSf-2

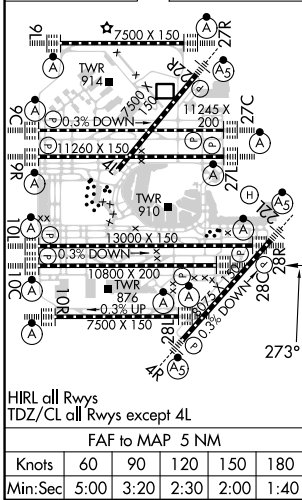
MISSED APPROACH: Climb to 1100 then climbing left turn to 4000 on heading 215° and DPA VOR/DME R-082 to DPA VOR/DME and hold.

Simultaneous approach authorized.

D-ATIS <b>135.4</b> <b>282.225</b>	CHICAGO APP CON <b>119.0 292.125</b>	O'HARE TOWER <b>120.75 348.0</b>	GND CON (TWR CENTER) <b>124.125</b> (TWR NORTH) <b>118.05</b> (TWR SOUTH) <b>126.675</b> (ALL TWRS)	(TWR CENTER) <b>121.75</b> (OBND) <b>121.9</b> (IBND)	CLNC DEL <b>121.6</b>	CPDLC
--	---	-------------------------------------	--	---	--------------------------	-------



ELEV 680	D	TDZE 651
----------	---	----------



1100	4000	DPA R-082	DPA	RZUKO I-VZE [15.8] RADAR	KOENN I-VZE [22.1] RADAR	INDUH I-VZE [28.4] RADAR
hdg 215°				SEIKA INT I-VZE [7] RADAR	MEMAW I-VZE [19] RADAR	SNTOE I-VZE [25.3] RADAR
* LOC only.						
I-VZE [2]	ZUPTI INT I-VZE [3.8]	HAZIL I-VZE [12.7] RADAR	2300	4000	5000	6000 7000 8000
IM	* I-VZE [2.9]					GS 3.00° TCH 55
VGSi and ILS glidepath not coincident (VGSi Angle 3.00/TCH 80).						
0.1	0.9	0.8	3.2 NM	5.7 NM	3.1 NM	3.1 NM 3.1 NM 3.1 NM 3.1 NM
CATEGORY	A		B		C	
S-ILS 28C	851/18 200 (200-½)					
S-LOC 28C	1200/24	549 (600-½)	1200/60		549 (600-1¼)	
ZUPTI FIX MINIMUMS (DUAL VOR RECEIVERS OR DME REQUIRED)						
S-LOC 28C	1040/24	389 (400-½)	1040/35		389 (400-¾)	

EC-3, 20 MAR 2025 to 17 APR 2025

EC-3, 20 MAR 2025 to 17 APR 2025