

LOC/DME I-VQX 110.75 Chan 44(Y)	APP CRS 274°	Rwy ldg TDZE Apt Elev	7500 667 680
--	------------------------	-----------------------------	---

ILS or LOC RWY 28L

CHICAGO O'HARE INTL (ORD)

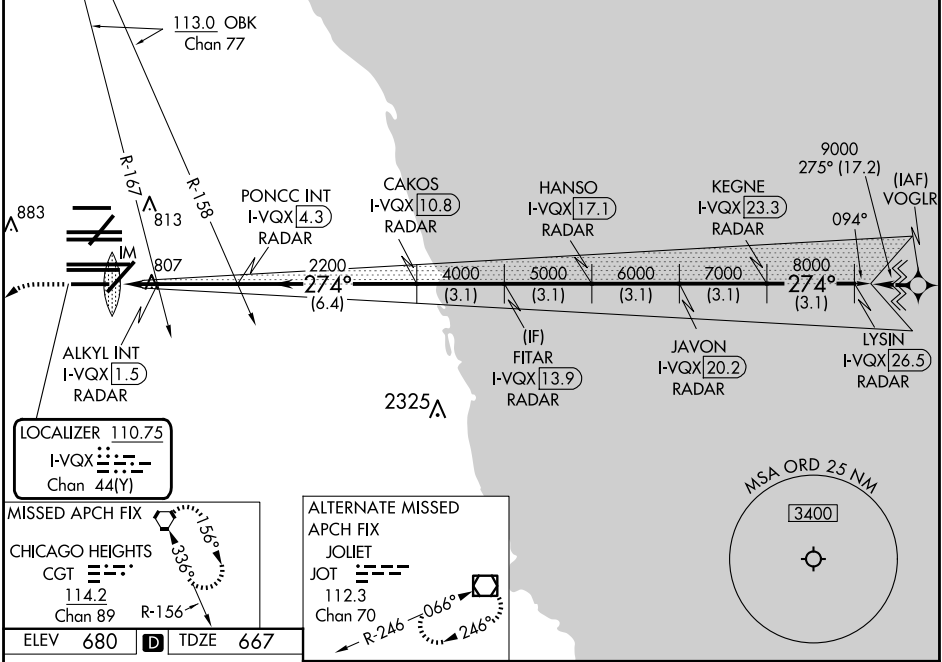
Aircraft not GPS equipped - RADAR required for procedure entry. DME or RADAR required.
From VOGLR: RNAV 1-GPS required.

Simultaneous approach authorized.

ALS-F-2

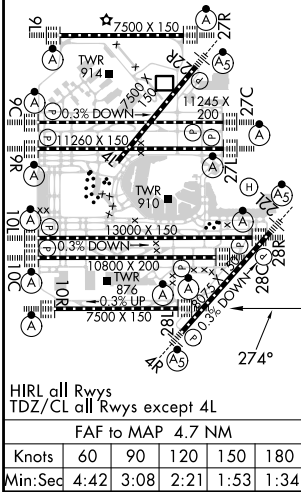
MISSED APPROACH: Climb to 1200 then climbing left turn to 4000 direct CGT VORTAC and hold.

D-ATIS 135.4 282.225	CHICAGO APP CON 119.0 292.125	O'HARE TOWER 133.0 348.0	GND CON (TWR NORTH) 124.125 (TWR SOUTH) 118.05 (ALL TWRS) 226.675	(TWR CENTER) 121.75 (OBND) (IBND) 121.9	CLNC DEL 121.6	CPDLC
--	---	------------------------------------	---	--	--------------------------	-------



EC-3, 20 MAR 2025 to 17 APR 2025

EC-3, 20 MAR 2025 to 17 APR 2025



1200	4000	CGT	*LOC only.			
↑	↶	⬠				
I-VQX DME ANTENNA	ALSKY INT I-VQX [1.5] RADAR	CAKOS I-VQX [10.8] RADAR	PONCC INT I-VQX [4.3] RADAR	FITAR I-VQX [13.9] RADAR	JAVON I-VQX [20.2] RADAR	LYSIN I-VQX [26.5] RADAR
I-VQX [0.3]	*I-VQX [0.8]	I-VQX [2200]	I-VQX [2200]	I-VQX [2200]	I-VQX [2200]	I-VQX [2200]
0.2	0.9	0.7	2.9 NM	6.4 NM	3.1 NM	3.1 NM
CATEGORY			A	B	C	D
S-ILS 28L			867/18 200 (200-½)			
S-LOC 28L			1240/24 573 (600-½)		1240-1¼ 573 (600-1¼)	
ALKYL FIX MINIMUMS (DUAL VOR RECEIVERS OR DME REQUIRED)						
S-LOC 28L			1060/24 393 (400-½)		1060/35 393 (400-⅝)	

9000

274°

7000

8000

GS 3.00°

TCH 55