

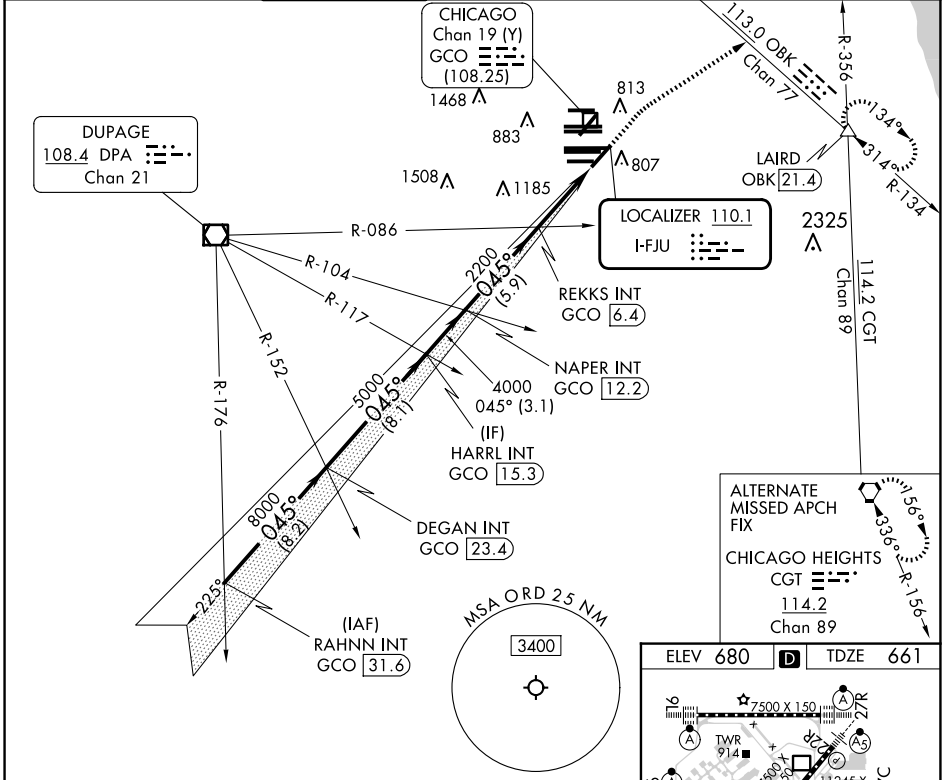
LOC I-FJU 110.1	APP CRS 045°	Rwy ldg TDZE Apt Elev	8075 661 680
---------------------------	------------------------	-----------------------------	---

ILS or LOC RWY 4R

CHICAGO O'HARE INTL (ORD)

RADAR required for procedure entry.		MALSR	MISSED APPROACH: Climb to 1200 then climbing right turn to 4000 on heading 060° and OBK VOR/DME R-134 to LAIRD INT/OBK 21.4 DME and hold.	
-------------------------------------	--	-------	---	--

D-ATIS 135.4 282.225	CHICAGO APP CON 119.0 292.125	O'HARE TOWER 120.75 348.0	124.125 (TWR NORTH) 118.05 (TWR SOUTH) 226.675 (ALL TWRs)	GND CON (TWR CENTER) 121.75 (OBND) 121.9 (IBND)	CLNC DEL 121.6	CPDLC
--	---	-------------------------------------	--	---	--------------------------	-------



ALTERNATE MISSED APCH FIX

CHICAGO HEIGHTS CGT 114.2 Chan 89

RAHNN INT GCO 31.6	DEGAN INT GCO 23.4	HARRL INT GCO 15.3	NAPER INT GCO 12.2	REKKS INT GCO 6.4	LAIRD INT
<p>11000 GS 3.00° TCH 52</p> <p>8000 045°</p> <p>5000 4000 2200</p> <p>8.2 NM 8.1 NM 3.1 NM 5.9 NM 4.4 NM</p>					

ELEV 680	TDZE 661
----------	----------

HRL all Rwys TDZ/CL all Rwys except 4L FAF to MAP 4.4 NM

Knots	60	90	120	150	180
Min:Sec	4:24	2:56	2:12	1:46	1:28

CATEGORY	A	B	C	D
S-ILS 4R	861/18		200 (200-½)	
S-LOC 4R	1160/24 499 (500-½)		1160/50 499 (500-1)	
CIRCLING	1220-1 540 (600-1)		1220-1½ 1460-2½ 540 (600-1½) 780 (800-2½)	

EC-3, 20 MAR 2025 to 17 APR 2025

EC-3, 20 MAR 2025 to 17 APR 2025