

LOC/DME I-OYG 111.9 Chan 56	APP CRS 093°	Rwy Idg 11245 TDZE 673 Apt Elev 680
--	------------------------	--

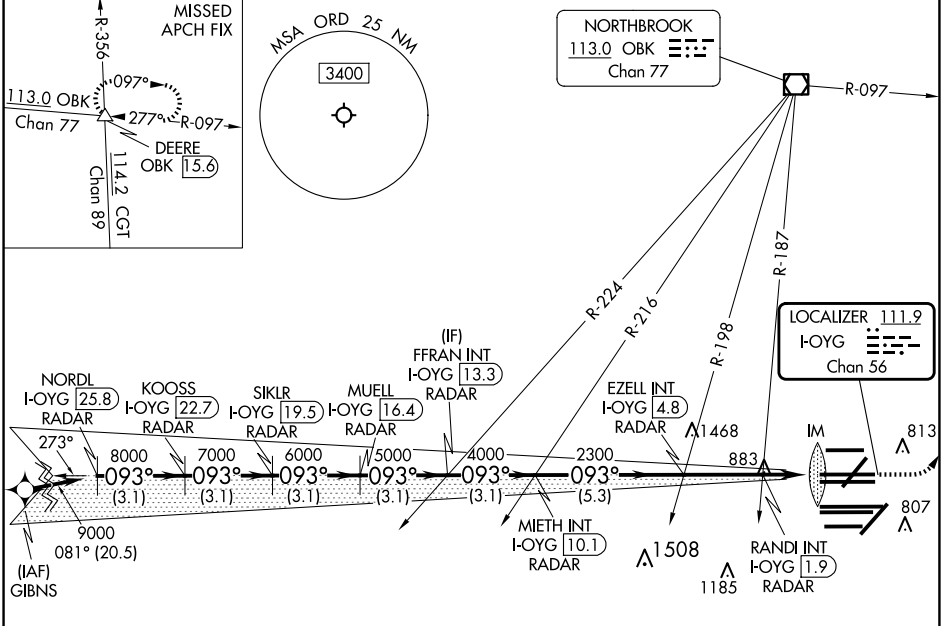
ILS or LOC RWY 9C

CHICAGO O'HARE INTL (ORD)

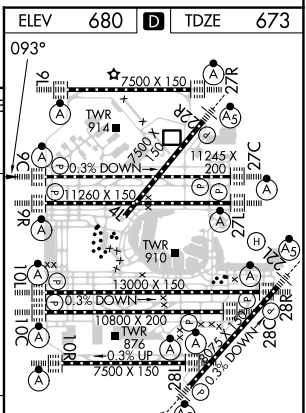
DME or RADAR required. From GIBNS: RNAV 1-GPS required. Aircraft not GPS equipped - RADAR required for procedure entry.
 ⚠ Simultaneous approach authorized. For inop ALS, increase S-LOC 9C Cat C/D visibility to 1½ SM.

ALSF-2
 MISSED APPROACH: Climb to 1200 then climbing left turn to 4000 on heading 037° and OBK VOR/DME R-097 to DEERE INT/ OBK 15.6 DME and hold.

D-ATIS 135.4 282.225	CHICAGO APP CON 119.0 292.125	O'HARE TOWER 121.15 348.0	GND CON (TWR CENTER) 124.125 (TWR NORTH) 118.05 (TWR SOUTH) 226.675 (ALL TWRs)	CLNC DEL 121.6	CPDLC
--	---	-------------------------------------	--	--------------------------	-------



NORDL I-OYG 25.8 RADAR	KOOSS I-OYG 22.7 RADAR	SIKLR I-OYG 19.5 RADAR	MUELL I-OYG 16.4 RADAR	FFRAN INT I-OYG 13.3 RADAR	EZZELL INT I-OYG 4.8 RADAR	RANDI INT I-OYG 1.9 RADAR	MIETH INT I-OYG 10.1 RADAR	IM
3.1 NM	3.1 NM	3.1 NM	3.1 NM	3.1 NM	5.3 NM	2.8 NM	0.7 NM	1.1 NM
VGSi and ILS glidepath not coincident (VGSi Angle 3.00/TCH 72). 1200 4000 OBK DEERE hdg R-097 037°								
GS 3.00° TCH 55 9000 8000 7000 6000 5000 4000 2300 1400 1000 I-OYG DME ANTENNA IM I-OYG 1.2 I-OYG 0.2								
CATEGORY	A		B		C		D	



S-ILS 9C	873/18		200 (200-½)	
S-LOC 9C	1140/24	467 (500-½)	1140/50	467 (500-1)

HIRL all Rwys					
TDZ/CL all Rwys except 4L					
FAF to MAP 4.9 NM					
Knots	60	90	120	150	180
Min:Sec	4:54	3:16	2:27	1:58	1:38

EC-3, 20 MAR 2025 to 17 APR 2025

EC-3, 20 MAR 2025 to 17 APR 2025