

ILS PRM RWY 28C (SA CAT I)

(CLOSE PARALLEL)

CHICAGO O'HARE INTL (ORD)

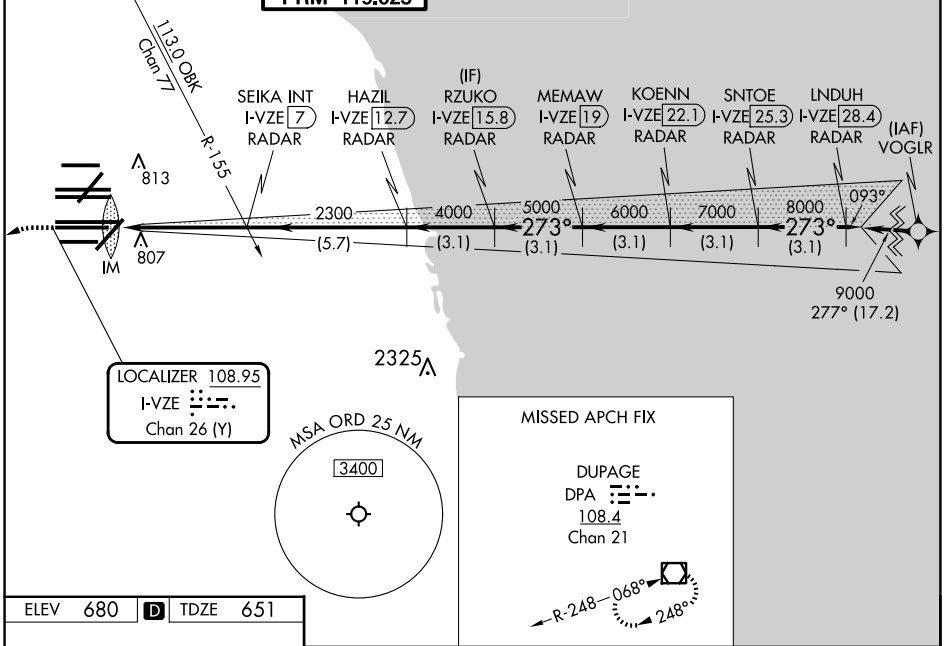
LOC/DME I-VZE 108.95 Chan 26 (Y)	APP CRS 273°	Rwy ldg 10800 TDZE 651 Apt Elev 680
--	------------------------	--

Aircraft not GPS equipped - RADAR required for procedure entry. DME or RADAR required. From VOGLR: RNAV 1-GPS required.

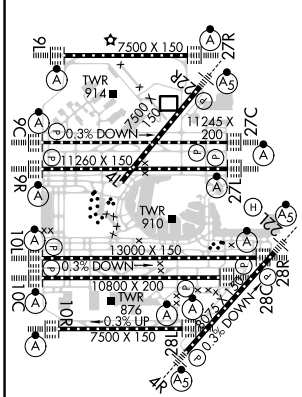
Simultaneous approach authorized. Use of FD or AP required during simultaneous operations. Dual VHF comm required. See additional requirements on AAUP. Requires specific OPSPEC, MSPEC, or LOA approval and use of HUD to DH.

ALSF-2 	MISSED APPROACH: Climb to 1100 then climbing left turn to 4000 on heading 215° and DPA VOR/DME R-082 to DPA VOR/DME and hold.
------------	--

D-ATIS 135.4 282.225	CHICAGO APP CON 119.0 292.125	O'HARE TOWER 120.75 348.0 PRM 119.625	GND CON (TWR NORTH) 124.125 (TWR SOUTH) 118.05 (ALL TWRS) 226.675	(TWR CENTER) (OBND) 121.75 (IBND) 121.9	CLNC DEL 121.6	CPDLC
--	---	---	---	--	--------------------------	-------



ELEV 680	D	TDZE 651
-----------------	----------	-----------------



1100	4000	DPA	DPA	VGSI and ILS glidepath not coincident (VGSI Angle 3.00/TCH 80)
↑	hdg 215°	R-082		
		SEIKA INT I-VZE [7] RADAR	HAZIL I-VZE [12.7] RADAR	MEMAW I-VZE [19] RADAR
		RZUKO I-VZE [15.8] RADAR	KOENN I-VZE [22.1] RADAR	SNTOE I-VZE [25.3] RADAR
		LINDUH I-VZE [28.4] RADAR		
		2300	4000	5000
		2300	7000	8000
		273°	9000	
		GS 3.00°	TCH 55	
		1044'	5 NM	5.7 NM
		3.1 NM	3.1 NM	3.1 NM
		3.1 NM	3.1 NM	3.1 NM
CATEGORY	A	B	C	D
S-ILS 28C	RA 155/14 150 DA 801			

HIRL all Rwy's
TDZ/CL all Rwy's except 4L

SA CATEGORY I ILS - SPECIAL AIRCREW & AIRCRAFT CERTIFICATION REQUIRED

EC-3, 20 MAR 2025 to 17 APR 2025

EC-3, 20 MAR 2025 to 17 APR 2025