

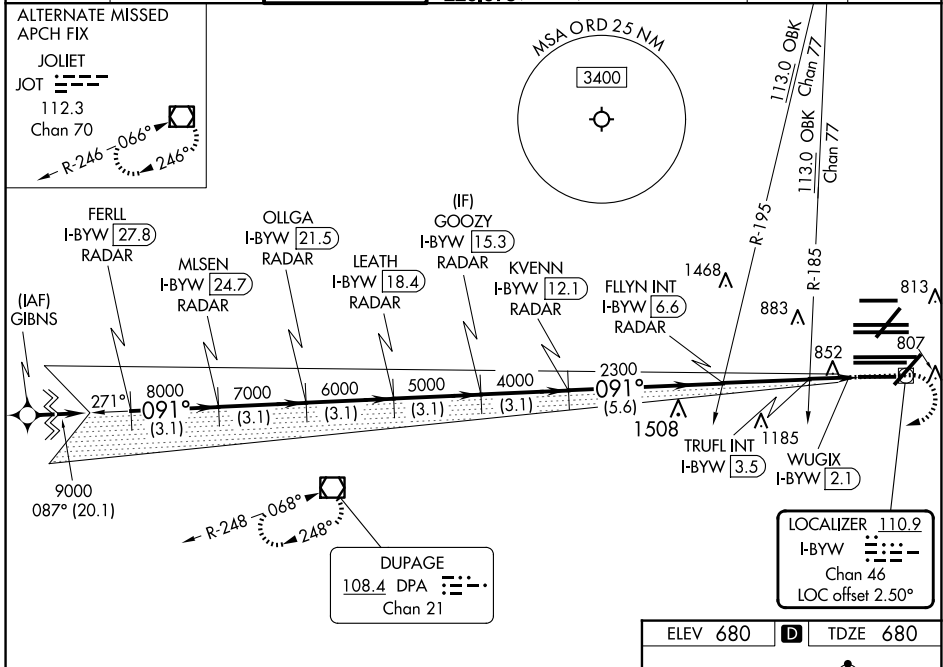
LOC/DME I-BYW 110.9 Chan 46	APP CRS 091°	Rwy Idg 7500 TDZE 680 Apt Elev 680
--	------------------------	---

ILS Y or LOC Y RWY 10R

CHICAGO O'HARE INTL (ORD)

RNAV 1-GPS or RADAR required for procedure entry. DME or RADAR required. From GIBNS: RNAV-1 GPS required.	ALSF-2 	MISSED APPROACH: Climb to 1200 then climbing right turn to 4000 direct DPA VOR/DME and hold.
Simultaneous approach authorized.		

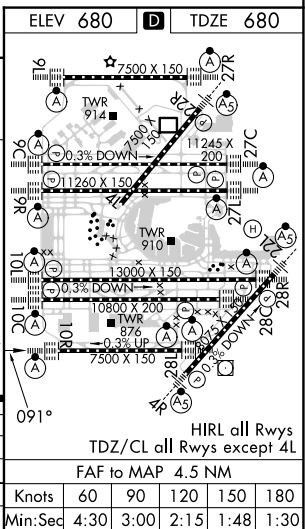
D-ATIS 135.4 282.225	CHICAGO APP CON 119.0 292.125	O'HARE TOWER 133.0 348.0	GND CON (TWR CENTER) 124.125 (TWR NORTH) 118.05 (TWR SOUTH) 226.675 (ALL TWRS)	(TWR CENTER) 121.75 (OBND) 121.9 (IBND)	CLNC DEL 121.6	CPDLC
--	---	------------------------------------	--	---	--------------------------	-------



EC-3, 20 MAR 2025 to 17 APR 2025

EC-3, 20 MAR 2025 to 17 APR 2025

FERIL I-BYW 27.8 RADAR	OLLGA I-BYW 21.5 RADAR	GOOZY I-BYW 15.3 RADAR	FLYIN INT I-BYW 6.6 RADAR	*LOC only.		
MLSN I-BYW 24.7 RADAR	LEATH I-BYW 18.4 RADAR	KVENN I-BYW 12.1 RADAR	TRUFL INT I-BYW 3.5 RADAR	WUGIX I-BYW 2.1		
9000	8000	7000	6000	5000	4000	2300
GS 3.00° TCH 55			2300		*1220	
3.1 NM			3.1 NM		5.6 NM	
CATEGORY	A		B		C	
S-ILS 10R	930/24		250 (300-½)			
S-LOC 10R	1220/24	540 (600-½)	1220/55		540 (600-1)	
TRUFL FIX MINIMUMS (DUAL VOR RECEIVERS OR DME REQUIRED)						
S-LOC 10R	1120/24	440 (500-½)	1120/40		440 (500-¾)	



HIREL all Rwsy TDZ/CL all Rwsy except 4L					
FAF to MAP 4.5 NM					
Knots	60	90	120	150	180
Min:Sec	4:30	3:00	2:15	1:48	1:30