

| | | |
|--|------------------------|--|
| WAAS CH 48904 W10A | APP CRS 093° | Rwy Idg 12246 TDZE 672 Apt Elev 680 |
|--|------------------------|--|

RNAV (GPS) RWY 10L

CHICAGO O'HARE INTL (ORD)

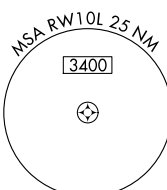
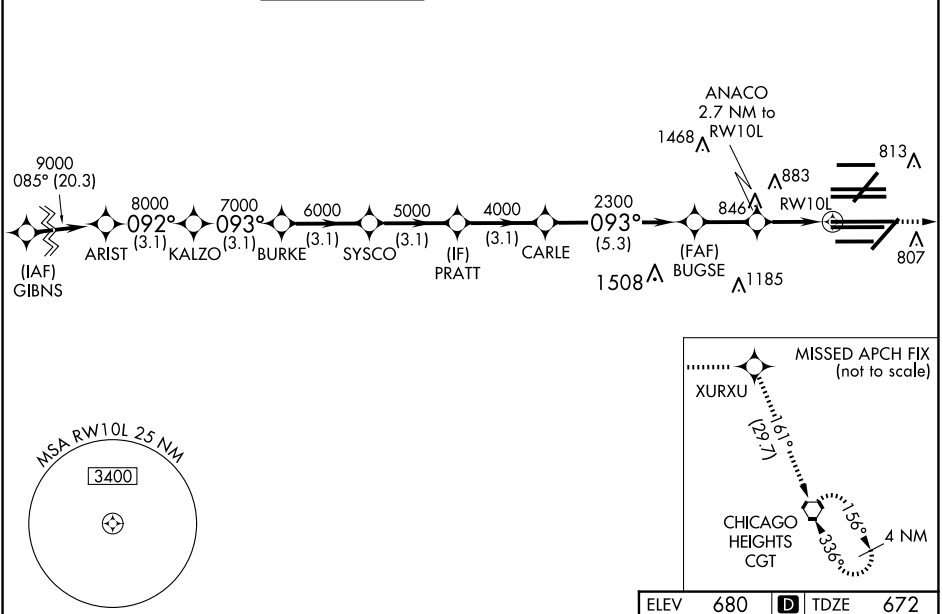
RADAR required for procedure entry: RNP APCH.

▼ For uncompensated Baro-VNAV systems, LNAV/VNAV NA below -19°C or above 54°C. Simultaneous approach authorized. LNAV procedure NA during simultaneous operations. Use of FD or AP providing RNAV track guidance required during simultaneous operations.



MISSED APPROACH: Climb to 4000 direct XURXU and on track 161° to CGT VORTAC and hold.

| | | | | | | |
|--|---|------------------------------------|---|---|--------------------------|-------|
| D-ATIS 135.4 282.225 | CHICAGO APP CON 119.0 292.125 | O'HARE TOWER 132.7 348.0 | GND CON 124.125 (TWR NORTH) 118.05 (TWR SOUTH) 226.675 (ALL TWRS) | (TWR CENTER) 121.75 (OBND) 121.9 (IBND) | CLNC DEL 121.6 | CPDLC |
|--|---|------------------------------------|---|---|--------------------------|-------|

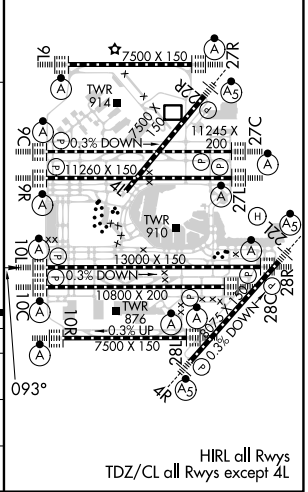


| | | |
|----------|---|----------|
| ELEV 680 | D | TDZE 672 |
|----------|---|----------|

VGSI and RNAV glidepath not coincident (VGSI Angle 3.00/TCH 74).

| | | | | | | | | | |
|-----------------|---------|--------|-------------|--------|---------|--------|-------------|-------|---------|
| ARIST | KALZO | BURKE | SYSCO | PRATT | CARLE | BUGSE | ANACO | XURXU | CGT |
| 9000 | 8000 | 7000 | 6000 | 5000 | 4000 | 2300 | 1580 | 4000 | tr 161° |
| GP 3.00° TCH 56 | 3.1 NM | 3.1 NM | 3.1 NM | 3.1 NM | 3.1 NM | 5.3 NM | 2.2 NM | 1.5 | 1.2 |
| CATEGORY | A | | B | | C | | D | | |
| LPV DA | 872/18 | | 200 (200-½) | | | | | | |
| LNAV/VNAV DA | 1062/35 | | 390 (400-¾) | | | | | | |
| LNAV MDA | 1120/24 | | 448 (500-½) | | 1120/45 | | 448 (500-¾) | | |

* RNP only.



EC-3, 20 MAR 2025 to 17 APR 2025

EC-3, 20 MAR 2025 to 17 APR 2025

HIRL all Rwys
TDZ/CL all Rwys except 4L